

TASMANIAN THOROUGHBRED

RACING CALENDAR

APRIL - JULY 2016



OVER HALF A CENTURY OF BREEDING WINNERS



ARMIDALE STUD
T A S M A N I A

www.armidalestud.com.au

Robyn Wishaw
0419 100 634
robyn@armidalestud.com.au

David Wishaw
0407 868 269
david@armidalestud.com.au



Tasracing
UBET Park Hobart
6 Goodwood Rd
Elwick TAS 7010
Telephone (03) 6212 9333

Members of the Board
Dean Cooper
Des Gleeson
Danny McCarthy
Trevor Leis
Tania Price
Justin Crawford

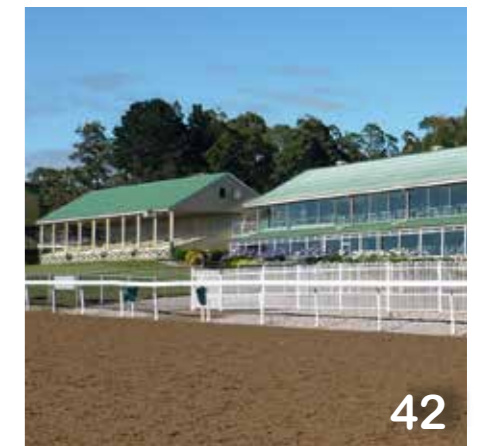
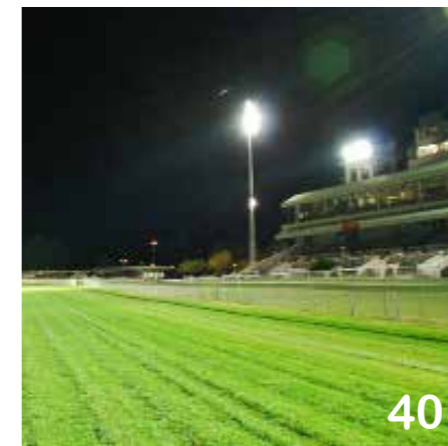
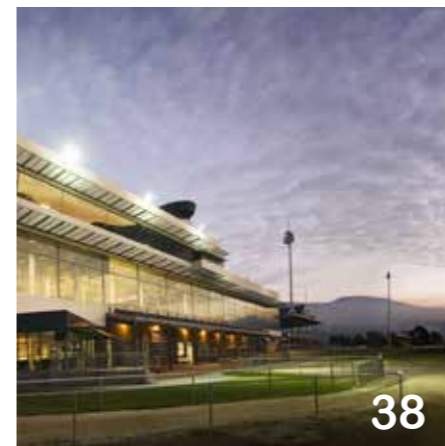
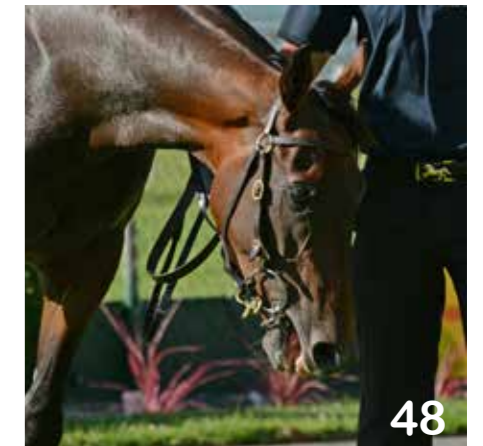
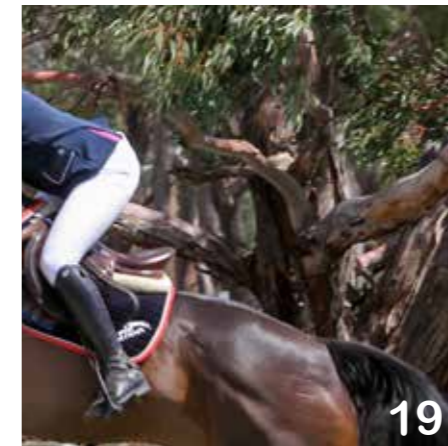
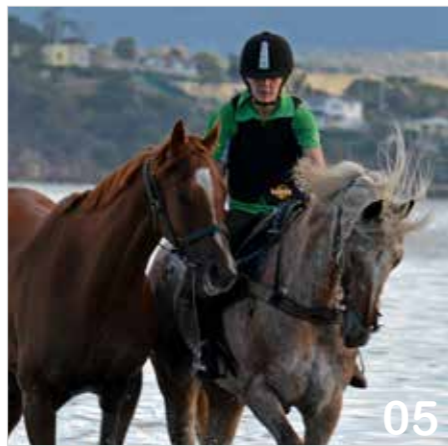
Chief Executive Officer Eliot Forbes
Chief Financial Officer Mark Tarring
Racing Manager David Manshanden
Sales & Marketing Manager Sam Steven
Thoroughbred Code Development Manager Simon Stout
Advertising & Content Designer Ronnell Zanotti (03) 6212 9312
Editorial Peter Staples (03) 6212 9318
Photography Peter Staples (03) 6212 9318
Ronnell Zanotti (03) 6212 9312

External Contributors
Photography Greg Irvine Magic Millions
Melissa Lee Stone Photography
Sharon Lee Chapman Photography



Cover Photo: Nautical, winner of the Bow Mistress Trophy
Image courtesy of Sharon Lee Chapman Photography
Story page 14

table of contents



features

- 04-06 Up Cups wins the Betfair Exchange Hobart Cup
- 08-09 The Devonport Cup
- 10-11 The Longford Cup
- 12-17 Feature Race Winners
 - The Conquering WFA
 - The Tasmanian Stakes
 - The UBET.com Stakes
 - The Thomas Lyons Stakes
 - The Tasmanian Guineas
 - The Hobart Guineas
 - The Tasmanian Derby
 - The Bow Mistress Trophy
 - The Newmarket
 - The Strutt Stakes
 - The Elwick Stakes
- 18-19 OTT - Off The Track

programme information section 1

- 20 Programme Notes
- 21 Autumn Feature Race Schedule
- 22-23 Autumn Feature Race Conditions
- 24-25 Programme Grid
- 26-33 Programme Detail
- 33 Future Race Dates
- 34 Barrier Trials & Grass Gallop Dates

racing information section 2

- 36 Track Rating Scale
- 38-43 At the Track
 - UBET Park Hobart
 - UBET Racing Centre Launceston
 - Tapeta Park, Devonport
- 44 Tasracing Thoroughbred Schedule of Fees
- 45 tasBonus Scheme
 - Bonus Payment Table
 - Upcoming tasBonus Double Up Sale Voucher Races
- 46 RBH Template
- 47 Set Weights Scale
- Track Safety Limits - refer relevant 'At the Track' pages 38-43

industry information section 3

- 48-49 Office of Racing Integrity Notifications
- 50 Racing Australia Updates

contact lists section 4

- 52-54 Licenced Persons Contact Details
 - Trainers
 - Farriers
 - Jockeys
 - Trial Riders
 - Rider Agents
- Official Contacts (Back Cover)
 - Tasracing
 - Office of Racing Integrity
 - Tasmanian Racing Clubs
 - Racing Victoria



BRUNTON'S CUP RUNNETH OVER

TASMANIAN Hall of Fame trainer David Brunton had longed to win a Betfair Exchange Hobart Cup but the last horse he ever expected to allow him to realise that dream was Up Cups.

Just over a year ago Up Cups was taken to Longford to run in a modest benchmark 62 sprint race and Brunton admitted he never expected the horse to make the return trip.

"We sent Up Cups to Longford for a class two and to be honest I thought that would be the end of his racing career and he'd end up a pony club horse," Brunton said.

"But the racing game is full of surprises and what happened with Up Cups was definitely one of those surprises in that race at Longford on New Year's Day 2015," he said.

"The horse had been leading in his races but he missed the start by three lengths and that's when we saw what he could do because he flashed home and won and he's been racing well ever since," he said.

Up Cups produced a dour staying performance to win the \$200,000 Group 3 event over 2400 metres and it also gave jockey David Pires the biggest win of his career.

Up Cups is unique in that he never has a gallop between races.

"We just lead this horse off a pony and let him walk through the calming salt water at Seven Mile Beach and he loves it," he said.

Brunton, 64, was raised in the Victorian country town of Ballarat and he spent his formative years learning his craft from the late Noel Kelly.

He ensued some tough times in the early years in Tasmania but a move to a training complex at Seven Mile Beach (Whispering Sands) paved the way for him and his son Scott to realise their training dreams.

Together they won five consecutive state trainer premierships and when David decided to retire two years ago and hand the reins over to Scott he remained a part of the operation but taking more of a back seat.

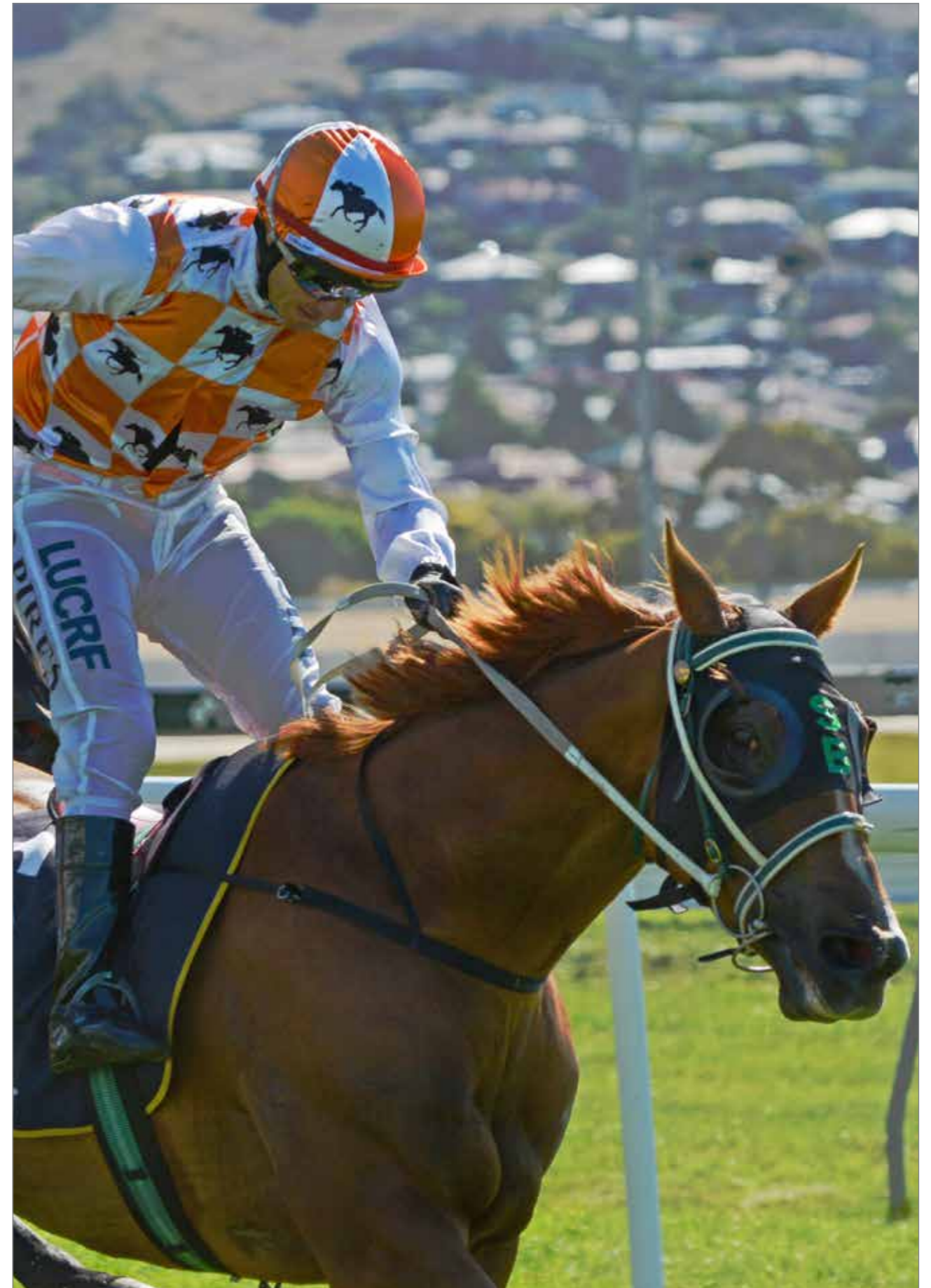
But once a trainer always a trainer so after a year he decided to take a couple of the team to train.

"I wanted to get a couple to train and one was Up Cups so I did well there," he said.

"But maybe I can go back to being retired now that I've trained a Hobart Cup winner and hand it all back to Scott," he said.

Up Cups was bred by Rick and Tina Polley who are long time clients of the Brunton stable.

Continued next page



Up Cups with jockey David Pires after winning The Betfair Exchange Hobart Cup

BRUNTON'S CUP RUNNETH OVER
continued from previous page

"When you breed horses you hope they can all win but to be honest I never in my wildest dreams thought this horse would ever win a Hobart Cup," Rick Polley said.

"Just over a year ago we thought he was finished as a racehorse but then everything just turned around and here we are owning a Hobart Cup winner and it's bloody marvellous," he said.

Pires described the win as the highlight of his career.

"I came to Tasmania from Melbourne as an apprentice 14 years ago and stayed because I love the place and while winning last season's jockeys' premiership was great this is the highlight of my career for sure," Pires said.

Pires had the gelded son of Helike settled midfield on the rails and he was always travelling in his comfort zone.

Geegees Goldengirl sprinted to the lead at the top of the straight and was being hailed the winner but she had no answer to Up Cups' powerful finish.

Up Cups hit the line a half-length clear of Geegees Goldengirl with Michelle Payne's mount Bellevue almost a length away third while Player One was doing his best work late to grab fourth ahead of the tiring Oerter.

"Up Cups is unique in that he never has a gallop between races.

We just lead this horse off a pony and let him walk through the calming salt water at Seven Mile Beach and he loves it."

David Brunton



Up Cups with track word rider Ruby Rose and lead pony Watson

RETURNING TO HOBART IN 2016

THE Think Pink Cup

SUNDAY 24 JULY 2016

AVOID
DISAPPOINTMENT

~
BOOK EARLY

TO BOOK
PHONE THE
TASMANIAN RACING
CLUB ON
(03) 6272 9492



TICKETS
ONLY
\$75.00 PP

Enjoy a fantastic day out at
UBET Park Hobart and experience

- ◆ live racing
- ◆ the thrill of a flutter
- ◆ live and silent auctions, raffles and prizes
- ◆ sumptuous dining overlooking the picturesque Hobart race track and
- ◆ help a great cause. 100% of fundraising is donated to support the National Breast Cancer Foundation

Wear a splash
of pink !!

Sponsored by



MACMURRAY Insurance Brokers



tasracing.com.au



Geegees Goldengirl with Jockey Sigrid Carr

WINNER - GEEGEES GOLDEN GIRL

4YO Chestnut Mare
by WORDSMITH from LA QUITA

Trained by Stuart Gandy
Jockey Sigrid Carr

2ND EXIMIUS
Trainer Mick Price
Jockey Jackie Beriman

3RD DREAM ROLLER
Trainer Troy Blacker
Jockey Kim Moore

4TH AVENTADOR
Trainer Barry Campbell
Jockey Craig Newitt

CAREER BEST EFFORT SEES
GEEGEES GOLDEN GIRL
WIN THE **DEVONPORT CUP**

“This mare has been the star of my stable for two seasons and to come out and do what she has done so far at four is testament to her ability.” *Stuart Gandy*

STAR Tasmanian four-year-old mare Geegees Goldengirl proved she had lost none of the talent that earned her the top three-year-old title last season by scoring a narrow but impressive win in the \$100,000 Simons Design Centre Devonport Cup at Spreyton in January.

Geegees Goldengirl gave arguably the best and most open Devonport Cup field in years a galloping lesson by leading throughout to take out the Devonport club's premier event over 1880 metres.

It was an impressive win and one that was no surprise to her connections.

However, race plans to go forward and take a sit were thrown out the window when rider Siddy Carr was left to settle the mare in front with nothing prepared to take up the running.

Coupled with not having raced on the synthetic track, Geegees Goldengirl could have been vulnerable leading the field but

instead she was courageous and showed great stamina to emerge triumphant.

She hit the line a half-length clear of interstate invader and race favourite Eximius (\$4.40) from the powerful Mick Price stable with Dream Roller (\$8) over a length away third.

The four-year-old mare was a big drifter in betting easing from \$3.50 to start at the lucrative price of \$5.50.

Geegees Goldengirl (Wordsmith-La Quita) was bred by her owners Paul and Elizabeth Geard who have a racing and breeding enterprise at Broadmarsh comprising over 160 horses.

“We have been lucky to have won two Hobart Cups and a Launceston Cup with Geegees Blackflash but to breed this mare that is a half-sister to Blackflash makes the win very special,” Paul Geard said.

Trainer Stuart Gandy described the win as “extremely satisfying”.

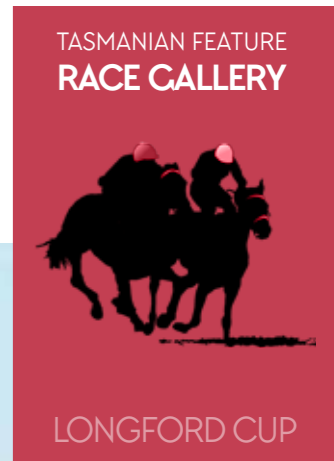
“This mare has been the star of my stable for two seasons and to come out and do what she has done so far at four is testament to her ability,” he said.

Outside of the winner, other good efforts in the race included that of third placed Dream Roller that went into the event a winner of the two major lead-up races the Golden Mile and the Sheffield Cup.

The Barry Campbell trained Aventador also performed well to finish fourth.

Geegees Goldengirl went on to deliver a stellar effort in the weight-for-age Summer Cup finishing second to Up Cups, before again replicating that feat in the Betfair Exchange Hobart Cup.

MISS IT AND A BIT WINS 2016 LONGFORD CUP



Miss It and a Bit with jockey Sherry Barr after winning the 2016 Longford Cup

WINNER - MISS IT AND A BIT

6YO Chestnut Mare
by HOST (CHI) from STEFFI (NZ)

Trained by Scott Brunton
Jockey Sherry Barr

2ND UP CUPS

Trainer David Brunton
Jockey David Pires

3RD AVENTADOR

Trainer Barry Campbell
Jockey Sigrid Carr

4TH LINGO

Trainer Craig Conron
Jockey Victor Wong

APPRENTICE Sherry Barr ended an emotion filled week the best way possible by winning her home town cup at Longford on New Year's Day aboard the Scott Brunton trained mare Miss It And A Bit.

It was a case of the local girl makes good and it was quite an emotional scene when she returned the mare to the unsaddling enclosure.

Barr is in the third year of her apprenticeship and only her second season riding but she delivered a riding performance befitting a more seasoned hoop.

Barr guided Miss It And A Bit to a thrilling all-the-way win, but had to endure some anxious minutes post-race when multiple riders asked to view stewards' video footage with the view of firing in protests, but all other riders decided against lodging objections paving the way for Barr to celebrate her win with close friends.

"It was a great way to end what had been an emotional week for me. I don't want to go into details but it had been a tough week emotionally and to come out and win my home town cup was just amazing," Barr said.

Miss It And A Bit made it back-to-back wins in the race for Brunton who prepared Cherry Dancer to win the race in 2015.

"For a while there Dad (David Brunton) and I ran second in the race a few times but it looks like it's becoming a good race for us," Brunton said.

"Sherry rode the mare a treat and deserves all the accolades that come her way because she rode the mare exactly as we asked," he said.

The Longford Cup meeting attracted a near record crowd owing to ideal weather conditions and additional leger car spaces that littered the southern boundary of the racecourse.



Admiral with jockey Brendon McCoull



Jerilderie Letter with jockey Anthony Darmanin



TASMANIAN FEATURE
RACE GALLERY



- CONQUERING WFA
- TASMANIAN STAKES
- UBET.COM STAKES
- TASMANIAN GUINEAS
- HOBART GUINEAS
- TASMANIAN DERBY
- THOMAS LYONS STAKES

ADMIRAL

4YO Bay Gelding
by MOSSMAN from REUNIFICATION

Trainer Barry Campbell
Jockey Brendon McCoull

Winner of the CONQUERING WFA
Winner of the TASMANIAN STAKES
Winner of the UBET.COM STAKES
Winner of the THOMAS LYONS STAKES

STAR Tasmanian four-year-old Admiral might not have been at the top of his game when he lined up in the \$100,000 weight-for-age Thomas Lyons Stakes over 1400m on Hobart Cup day but he won all the same.

Admiral started at the prohibitive price of \$1.10 but he had to pull out all stops to stave off a brave outsider Powercharged from the John Blacker stable to win by just under a half-length.

It was Admiral's fourth win in succession for the season and all that was left for him to do was win the George Adams that he won last year, to make it a clean sweep of the feature weight-for-age races on the 2015-16 calendar.

Admiral's trainer Barry Campbell wasn't fazed by the relatively narrow winning margin.

"You don't get paid on margins and I knew that he was still going into the race with improvement in him for his next assignment but the bottom line is he still won," Campbell said.

Jockey Brendon McCoull echoed the trainer's comments.

"When Barry (Campbell) tells me the horse is spot on then it is just like driving a Lamborghini but just before I got legged up he said the horse was good and that's pretty much how he performed but I expect he will be spot on for the George Adams," McCoull said.

Admiral delivered a brilliant performance to win the Conquering Stakes in Launceston which was the first of his weight-for-age wins followed by another exemplary effort to take out the Tasmanian Stakes over 1600m.

The talented gelding then had to drop back to 1200m in the UBET.com Stakes but he handled it with aplomb to score comfortably from Geegees Doublejay.

JERILDERIE LETTER

3YO Brown Gelding
by BUSHRANGER (IRE) from PIRATE'S SIRENE

Trainer Adam Trinder
Jockey Anthony Darmanin

Winner of the TASMANIAN GUINEAS
Winner of the HOBART GUINEAS
Winner of the TASMANIAN DERBY

WHEN trainer Adam Trinder ventured to the 2014 Tasmanian Magic Millions Yearling Sale to buy a relation to a filly that he trained that had loads of ability he was quietly confident of taking home a certain winner.

Trinder parted with \$11,000 for the half-brother to that good filly California Wish but well into the gelding's second preparation he was showing nothing on the training track causing the astute trainer to wonder whether he had bought a dud.

But when he finally took the son of Bushranger-Pirate's Sirene to the races those doubts were quickly erased.

Jerilderie Letter won a maiden on debut against older and more experienced opposition and to prove that was no fluke he delivered the same result in a class one three weeks later after which he was given a spell.

He resumed with a luckless third in the 3YO Cup but that would be his only loss.

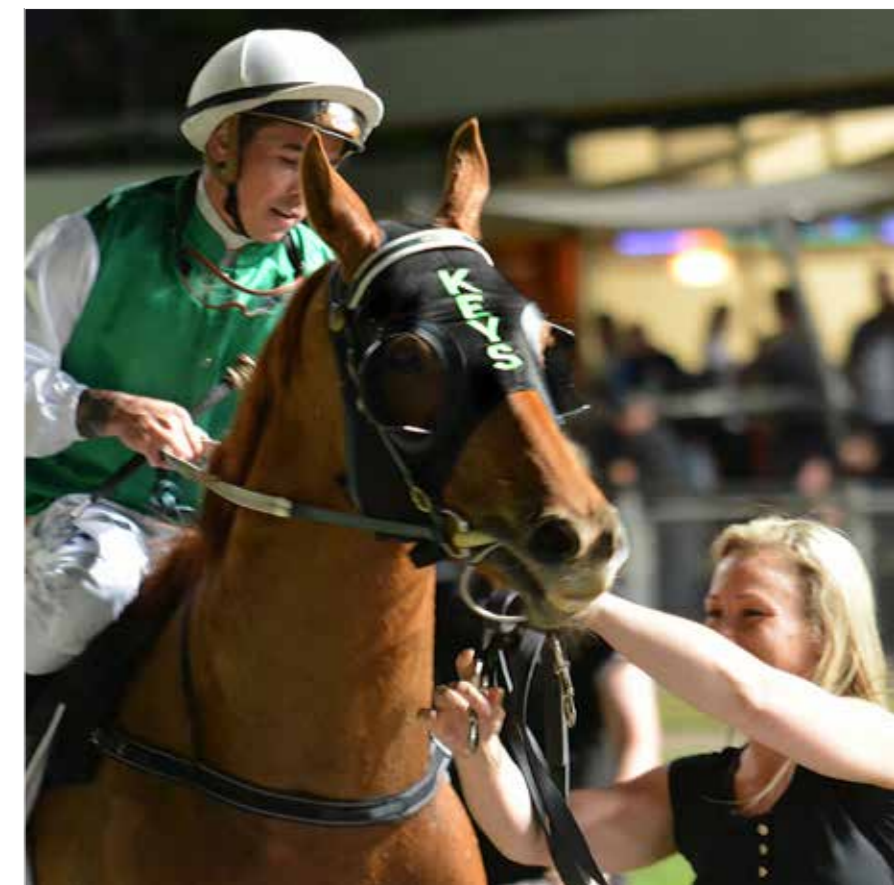
Jerilderie Letter went on to win the 3YO Trophy, the \$100,000 Listed Tasmania Guineas (1600m); the \$100,000 Listed Hobart Guineas (2100m) and he capped his season with a courageous never-say-die effort to win the \$100,000 Tasmanian Derby over 2200m.



Nautical narrowly defeats I Love It in the Group 3 Bow Mistress Trophy



Nautical with trainer Nikki Bourke



Hellova Street with jockey Dean Holland, winner of the Newmarket Handicap

TASMANIAN FEATURE
RACE GALLERY



BOW MISTRESS
TROPHY
NEWMARKET
HANDICAP

NAUTICAL

6YO Bay or Brown Mare
by NIELLO from MAGDA

Trainer Nikki Bourke (Cranbourne)
Jockey Brad Rawiller

Winner of the BOW MISTRESS TROPHY

VICTORIAN mare Nautical produced a career-best performance to score a last-stride win in the \$125,000 Group 3 Bow Mistress Trophy at UBET Park.

Nautical produced a barnstorming finish to run down the favourite I Love It that looked set to make it consecutive wins in the weight-for-age mares' classic when she bounded clear at the top of the home straight.

In a desperately close photo-finish it was a relieved trainer Nikki Burke when her mare's number was posted in the winner's frame on the semaphore board.

"I was so nervous because when we arrived in Tasmania on the boat I was shocked when I saw the mare, because

she had tucked right up and had lost a lot of weight," Burke said.

"She hadn't eaten any hard food from the day she left Melbourne right up to the start of the race but she had drunk well and eaten some grass hay so we let her run."

"It was obviously more stressful for me than the horse but given the circumstances to do what she did to win the race is an amazing effort," she said.

Nautical (Niello-Magda) was given the run of the race by Brad Rawiller who had her settled midfield two-off the fence with cover and he had her travelling comfortably to the home turn.

I Love It forged to the lead at the top of the straight and quickly put two lengths on the field but when Rawiller eased Nautical into clear racing room she slipped into overdrive and grabbed I Love It on the line to score by a nose.

The John Blacker-trained Erin's Element came from near last turning for home to grab third over two lengths astern and just ahead of Mossbeat.

Burke said she paid only \$10,000 for Nautical at a Melbourne Autumn sale.

HELLOVA STREET

5YO Chestnut Gelding
by HELIKE (USA) from BUTTER STREET

Trainer Scott Brunton
Jockey Dean Holland

Winner of the NEWMARKET HANDICAP

STAR Tasmanian galloper Hellova Street cemented his reputation as one of the best Tasmanian sprinters of all time when he made it back-to-back wins in the \$100,000 Newmarket Handicap over 1200 metres at the UBET Racing Centre in Launceston in November.

Hellova Street settled just off the speed but when he was called on for the supreme effort well into the home straight he powered home to defeat rank outsider Erin's Element and favourite Geegees Doublejay who hit the line in sync to dead-heat for second.

Hellova Street was sent out the third favourite at \$5.50 while Geegees Doublejay was the popular elect at \$2.70 (fixed odds) ahead of Admiral that was backed in from \$4.60 to \$3.40.

Hellova Street (Helike-Butter Street) had always shown a special brilliance and for over a year he only ever raced against the best.

The courageous win prompted Hellova Street's trainer Scott Brunton to forecast a trip interstate for the five-year-old where he will be aimed at a Group sprint.

"This horse is an amazing sprinter and his times tell us he would be up to the good ones in Group races across the water," Brunton said.

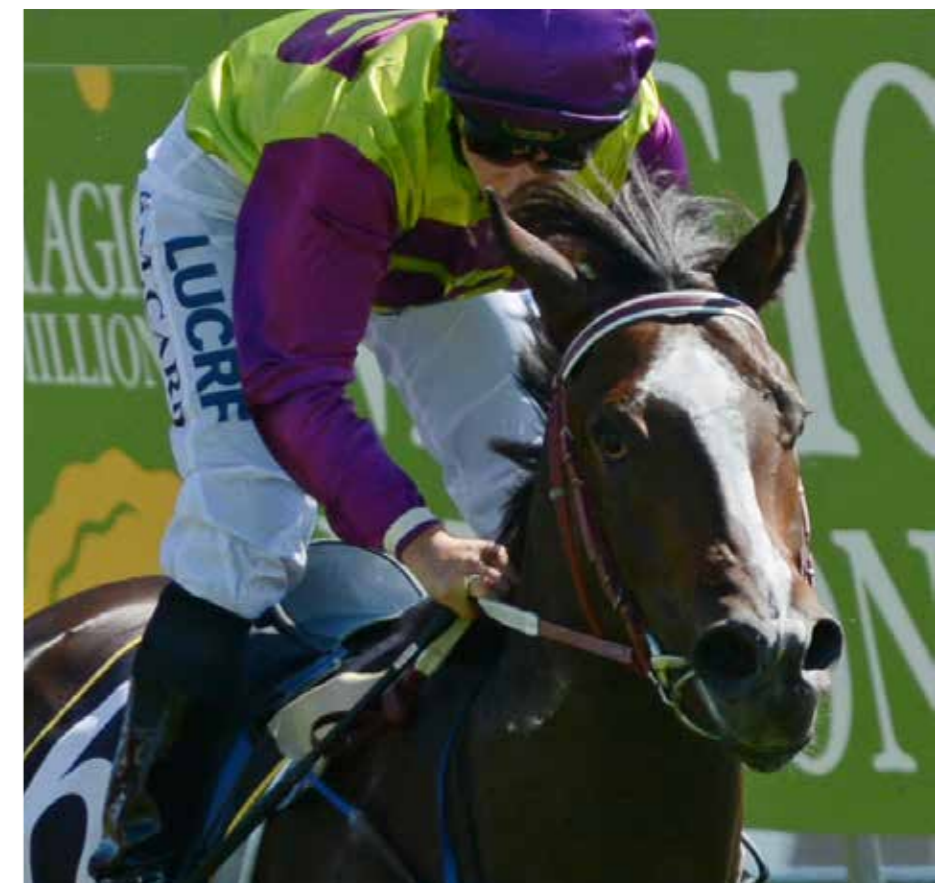
In winning his second Newmarket he joined an elite group to have achieved the feat.



Sebring Sally with jockey Damien Oliver takes out the Listed Strutt Stakes



Gee Gee Double Dee with jockey Sigrid wins the Listed Elwick Stakes



TASMANIAN FEATURE
RACE GALLERY



STRUTT STAKES
ELWICK STAKES

SEBRING SALLY

3YO Brown Filly
by SEBRING from DONNA AMATA

Trainer Chris Waller
Jockey Damien Oliver

Winner of the STRUTT STAKES

THE Chris Waller trained Sebring Sally delivered a workmanlike performance to emerge triumphant in the Strutt Stakes over 2100m at UBET Park on Hobart Cup day to signal her arrival as a genuine Tasmania Oaks prospect.

Sebring Sally was awesome in her dismantling of the opposition in the \$100,000 Listed race that is the traditional lead-up race to the Tasmanian Oaks in Launceston.

Top jockey Damien Oliver hustled Sebring Sally from the gates to get a good position near the lead and succeeded in securing an ideal spot one-out and one-back from the early leader Gee Gees Top Notch.

However when the pace slackened up front outsider She's Rosie made a charge for the lead along with Miss Choosey that refused to surrender the front spot to the home turn.

When Oliver called on his filly for the supreme effort in the home straight the daughter of Sebring let down brilliantly.

Sebring Sally went on to score comfortably from Gee Gees Top Notch and the Peter Moody-trained All That I Know that hit the line in sync with only a nose separating the pair.

The filly was Waller's first starter in the state.

GEE GEE DOUBLE DEE

2YO Brown Filly
by WORDSMITH from JOSIES DOUBLE

Trainer Leon, Dean & Trent Wells
Jockey Sigrid Carr

Winner of the ELWICK STAKES

WHEN well-bred two-year-old filly Gee Gee Double Dee debuted with an effortless seven-length win in the first juvenile race of the season it was obvious she had above average ability.

But as the season progressed she emerged as a potential superstar winning at her next two starts and by big margins.

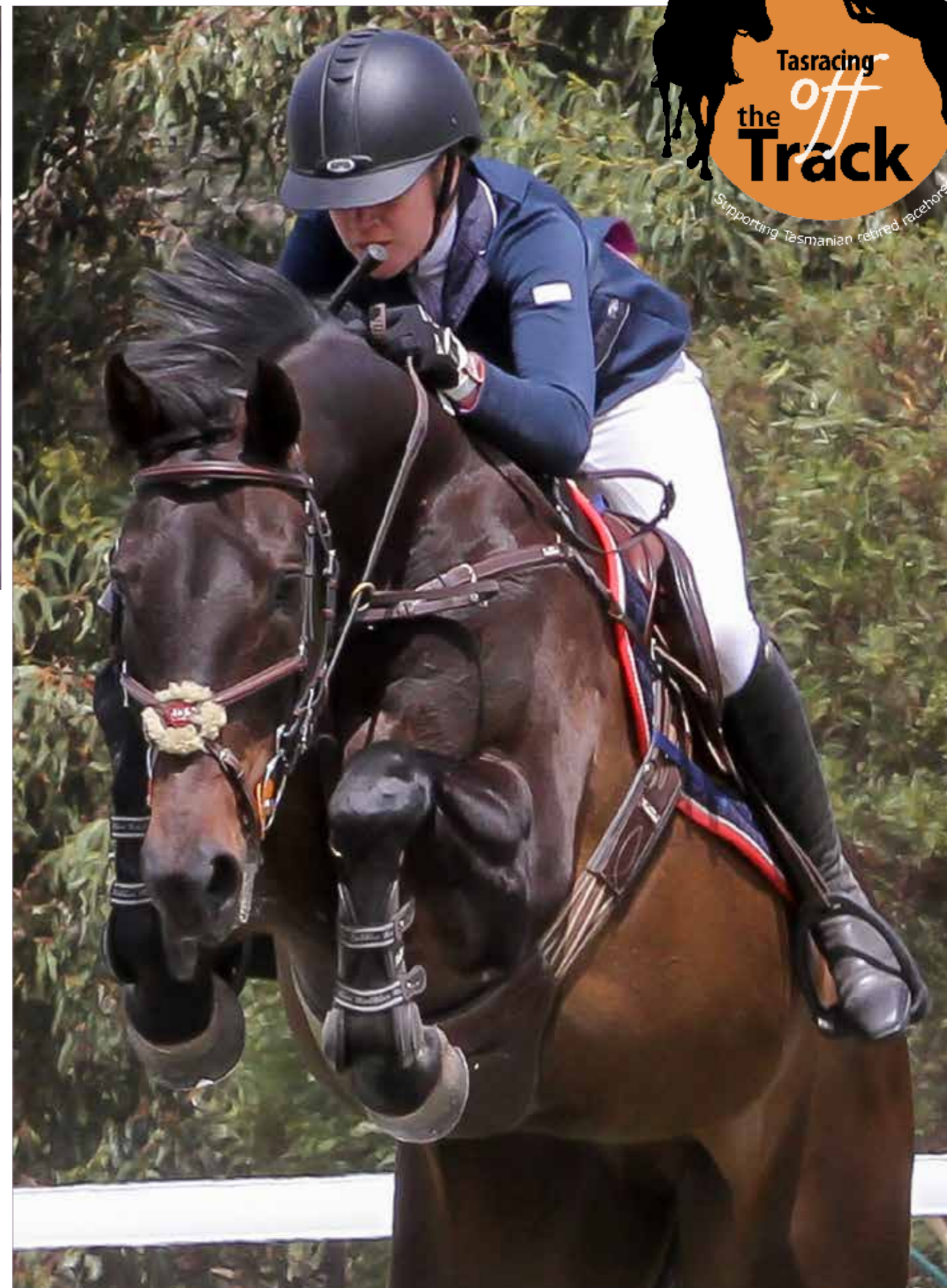
At her fourth start on Hobart Cup day she was sent out the \$1.10 favourite in the \$100,000 Listed Elwick Stakes and won but her winning margin over the John Blacker-trained Mariah's Magic was only a half-length and she was pushed right out by rider Siggie Carr to win.

But that relatively narrow margin was clearly a result of interference suffered a few times in the run.

"Given that she hit the running rail twice and the interference she received, any other horse would not have been able to win," Carr said.

The filly suffered a small laceration to her nearside foreleg as a result of clipping a rail upright but thankfully it was superficial and would not impede her campaign.

The filly will next contest the Gold Sovereign Stakes over 1200 metres at the UBET Racing Centre Launceston on 24 February 2016.



Off The Track

2015 TASMANIAN SHOWJUMPING CHAMPIONS
 32 HORSES NOMINATED FOR THE OTT AWARD ACROSS THE CHAMPIONSHIPS WEEKEND
 19 WERE PLACED IN EVENTS.

ENTRANTS FOR THE OTT AWARDS

RIDER	CURRENT NAME	RACING NAME	RIDER	CURRENT NAME	RACING NAME
Esther Cantwell	Fallbrook BlackTie	Ikan Bilis	Sascha Stephens	Sahara Sun	Sahara Sun
Reanna Bowman	Thelovejob	Thelovejob	Cody Lane	Vandella	Vandella
Courtney Swain	Alesto Star	Alesto Star	Jess Price	Bro Delago	Bro Delago
Elesha Spillane	Portavik Poachers Gold	Poachers Gold	Sarah Nicholas	Forest Sky	Forest Sky
Elesha Spillane	El Sunera	El Sunera	Ashley Steele	Rudi	Turf Predator
Ellie Gillow	Portland Miss	Portland Miss	Rebecca White	Spy Kingdom	Stallari
Sophie Orchard	Kite Runner	Kite Runner	Rebecca White	Spy Dancer	Sedate
Georgia Orchard	Wiganmore	Wiganmore	Bonnie Hall	Royal Odyssey	Charlie Raami
Bethany Hirst	Mighty William	King William	Ashley Steele	Mass Exodus	Mass Exodus
Abby Viney	Chief Citation	Chief Citation	Samantha Stone	Van HardYards	Van HardYards
Leeann McNamara	Hobson	Hobson	Pip Godfrey	Grande Venture	Jurassic
Sophie Roles	Cellar Door	Pickwick Silver	Keren Bennett	Ambervale Smudge	Shift Em
Sophie Roles	Happent	Happent	Kirsten Towns	Meg	Shoosh'n'Bubbles
Shane Rodman	Little Porkies	Little Porkies	Nick Towns	Spiritually	Spiritually
Emily Boer	Foul Snookered	Foul Snookered	Emily Ruffo	My Jethro	My Jethro
Laura Johnson	Dream if you Dare	Dream if you Dare	Emily Ruffo	My Danny Dazzler	Danny Dazzler
Laura Johnson	Any Danger	Any Danger	Claire Casey	Monte Gambler	Monte Gambler

Photography courtesy of Melissa Lee Stone Photography

Above centre: Winner of the OTT Award Little Porkies, ridden by Shane Rodman
 Above left: Jess Price, rider of Bro Delago (second)
 Above right: (Third placegetter) Laura Johnson on Any Danger



- 20 Programme Notes
- 21 Autumn Feature Race Schedule
- 22-23 Feature Race Conditions
- 24-25 Programme Grid
- 26-33 Programme Detail
- 33 Future Race Dates
- 34 Barrier Trials & Grass Gallop Dates



Photo: Erin's Element (Purple & Yellow Diamonds) with jockey Damien Thornton wins the Lady Lynette 1100m at UBET Park Hobart, 24 January 2016

programme notes

Simon Stout

The Tasmanian Autumn Program presents several initiatives which will provide excellent opportunities for participants throughout the racing period.

Tasracing in assessing programming for the compilation of the April – July program grid conferred with the handicapping department at Racing Victoria with particular focus on the make-up of the racing population.

Attention was paid to the Class based races with particular consideration to the population distribution, racing opportunities and field size metrics from 2015.

From the review, the April to July 2016 program grid will see the implementation of a trial restructure of the class races presented. This will be the replacement of Class 2 races with Class 3 races and replacement of Class 4 races with Class 5 races.

Current Race Type	Proposed Race Type
Class 1	Class 1
Class 2	Class 3
Class 4	Class 5

It is envisaged that this amendment will present ongoing class race opportunities for approximately 90% of the racing population in Tasmania, further encouraging the racing of progressive horses and continuing the presentation of a product that is attractive to wagering customers.

With the Class 3 cohort encompassing over 20% of the population, this proposal will avail better field sizes and opportunity to further develop otherwise unsustainable variation in the program grid, which will be witnessed in the trial of Class 3 1600m races.

Industry has expressed its support of the program trial through endorsement at both the ATA and TAN December 2015 meetings.

Tasracing, both during and after the trial will review closely all key data metrics - racing population distribution, race nomination numbers, average race field sizes and average race wagering turnover, along with industry feedback throughout this time to gauge the effectiveness of the program modification.

The April – July program is highlighted by the 2016 Autumn Carnival which continues on from the revised format of 2015. Namely the inclusion of races that cater for Open class sprinters and a program that culminates in an Autumn finals day at the TTC on Sunday 10 May with four \$30,000 races highlighting the program.

Key Autumn carnival notes are:

- The Devonport Easter meeting in 2016 is completed in late March and allowed for flow into the 2016 Autumn Carnival, and this was capitalized on with the programming of the \$16k Easter Sprint over 1000m as an optional starting point for the Open class Sprinters.
- The \$20k 1200m Jack Frost Quality Handicap to be run at the final Launceston night meeting for the season on Wednesday 20 April.
- The final of the Autumn Sprint races, a \$30k 1400m Open Set Weights & Penalties race, an important opportunity for Open class runners.

AUTUMN feature race schedule

APRIL 2016

Wednesday 20 - TTC

OPEN \$20k Quality Hcp 1200m

Sunday 24 - TRC

2YO \$25k Autumn SW 1100m

3YO \$25k Autumn SW 1100m

F&M \$25k Autumn Hcp 1100m

OPEN \$25k Open Hcp 1600m

MAY 2016

Sunday 8 - TRC

2YO \$25k Autumn SW 1200m

3YO \$25k Autumn SW 1200m

F&M \$25k Autumn Hcp 1200m

OPEN \$25k Open Hcp 2100m

Sunday 22 - TTC

2YO \$30k Sires Produce SW 1400m

3YO \$30k SW&P 1400m

F&M \$30k Autumn Hcp 1400m

OPEN \$30k St Leger Qlty 2400m



SUNDAY 22 MAY 2016

TASMANIAN TURF CLUB
UBET RACING CENTRE
LAUNCESTON

\$30,000
TASMANIAN SIRES PRODUCE
2YO

1400 Metres, 2YO, Set Weights with penalties, Apprentices cannot claim

PRIZEMONEY Of \$30,000: First \$18,150 (plus trophy), Second \$5,400, Third \$2,700, Fourth \$1,350, Fifth to Eighth \$600

NOMINATIONS:

Close at 12 noon
Monday 16 May 2016

FINAL ACCEPTANCE:

Close at 9 am
Wednesday 18 May 2016

SCRATCHING FEE:

In accordance with LR 14.5

WEIGHTS:

Weights declared by 3 pm
Tuesday 17 May 2016

DECLARATION OF RIDERS:

Close at 12 noon
Wednesday 18 May 2016

**Colts & Geldings 56kg,
Fillies 54kg**

PENALTIES:

The winner of a race with the value to the winner of \$60,000 or more, 3kg and of two or more such races 4kg.
The winner of a race with the value to the winner of \$20,000 or more, 2kg and of two or more such races 3kg.
The winner of a race with the value to the winner of \$10,000 or more, 1kg and of two or more such races 1.5kg.
The winner of two races with the value to the winner of \$6,000 or more 1kg.
Penalties not to be cumulative. In applying this rule, where reference is made to prizemoney, no account shall be taken of any bonuses won by the horse.

BALLOTING CONDITIONS: Method of elimination of surplus horses at the time of final acceptances:

First: Horses which have received no weight penalty for the race, in order of lowest aggregate prizemoney received. Horses in this category with equal aggregate prizemoney will be eliminated by lot.

Second: Horses which have received the lowest weight penalty for the race and so on upwards, until the safety limit is reached. Horses in the same weight penalty category shall be eliminated in order of the lowest aggregate prizemoney received, horses in the same weight penalty category with equal aggregate prize money shall be eliminated by lot.

\$30,000
TASMANIAN ST LEGER
OPEN

2400 Metres, Quality Handicap, Apprentices cannot claim

PRIZEMONEY Of \$30,000: First \$18,150 (plus trophy), Second \$5,400, Third \$2,700, Fourth \$1,350, Fifth to Eighth \$600

NOMINATIONS:

Close at 12 noon
Monday 16 May 2016

FINAL ACCEPTANCE:

Close at 9 am
Wednesday 18 May 2016

SCRATCHING FEE:

In accordance with LR 14.5

WEIGHTS:

Weights declared by 3 pm
Tuesday 17 May 2016

DECLARATION OF RIDERS:

Close at 12 noon
Wednesday 18 May 2016

BALLOTING CONDITIONS: Method of elimination of surplus horses at the time of final acceptances:

First: Horses which have received no weight penalty for the race, in order of lowest aggregate prizemoney received. Horses in this category with equal aggregate prizemoney will be eliminated by lot.

Second: Horses which have received the lowest weight penalty for the race and so on upwards, until the safety limit is reached. Horses in the same weight penalty category shall be eliminated in order of the lowest aggregate prizemoney received, horses in the same weight penalty category with equal aggregate prize money shall be eliminated by lot.

\$30,000
AUTUMN OPEN CLASSIC
3YO

1400 Metres, 3YO, Set Weights with penalties, Apprentices cannot claim

PRIZEMONEY Of \$30,000: First \$18,150 (plus trophy), Second \$5,400, Third \$2,700, Fourth \$1,350, Fifth to Eighth \$600

NOMINATIONS:

Close at 12 noon
Monday 16 May 2016

FINAL ACCEPTANCE:

Close at 9 am
Wednesday 18 May 2016

SCRATCHING FEE:

In accordance with LR 14.5

WEIGHTS:

Weights declared by 3 pm
Tuesday 17 May 2016

DECLARATION OF RIDERS:

Close at 12 noon
Wednesday 18 May 2016

**Colts & Geldings 56kg,
Fillies 54kg**

PENALTIES:

The winner of a race with the value to the winner of \$60,000 or more, 3kg and of two or more such races 4kg.
The winner of a race with the value to the winner of \$20,000 or more, 2kg and of two or more such races 3kg.
The winner of a race with the value to the winner of \$10,000 or more, 1kg and of two or more such races 1.5kg.
The winner of two races with the value to the winner of \$6,000 or more 1kg.
Penalties not to be cumulative. In applying this rule, where reference is made to prizemoney, no account shall be taken of any bonuses won by the horse.

BALLOTING CONDITIONS: Method of elimination of surplus horses at the time of final acceptances:

First: Horses which have received no weight penalty for the race, in order of lowest aggregate prizemoney received. Horses in this category with equal aggregate prizemoney will be eliminated by lot.

Second: Horses which have received the lowest weight penalty for the race and so on upwards, until the safety limit is reached. Horses in the same weight penalty category shall be eliminated in order of the lowest aggregate prizemoney received, horses in the same weight penalty category with equal aggregate prize money shall be eliminated by lot.

\$30,000
AUTUMN OPEN CLASSIC
OPEN

1400 Metres, Set Weights with penalties, Apprentices cannot claim

PRIZEMONEY Of \$30,000: First \$18,150 (plus trophy), Second \$5,400, Third \$2,700, Fourth \$1,350, Fifth to Eighth \$600

NOMINATIONS:

Close at 12 noon
Monday 16 May 2016

FINAL ACCEPTANCE:

Close at 9 am
Wednesday 18 May 2016

SCRATCHING FEE:

In accordance with LR 14.5

WEIGHTS:

Weights declared by 3 pm
Tuesday 17 May 2016

DECLARATION OF RIDERS:

Close at 12 noon
Wednesday 18 May 2016

**Colts & Geldings 56kg,
Fillies 54kg**

PENALTIES:



The winner of a race with the value to the winner of \$60,000 or more, 3kg and of two or more such races 4kg.
The winner of a race with the value to the winner of \$20,000 or more, 2kg and of two or more such races 3kg.
The winner of a race with the value to the winner of \$10,000 or more, 1kg and of two or more such races 1.5kg.
The winner of two races with the value to the winner of \$6,000 or more 1kg.
Penalties not to be cumulative. In applying this rule, where reference is made to prizemoney, no account shall be taken of any bonuses won by the horse.

BALLOTING CONDITIONS: Method of elimination of surplus horses at the time of final acceptances:

First: Horses which have received no weight penalty for the race, in order of lowest aggregate prizemoney received. Horses in this category with equal aggregate prizemoney will be eliminated by lot.

Second: Horses which have received the lowest weight penalty for the race and so on upwards, until the safety limit is reached. Horses in the same weight penalty category shall be eliminated in order of the lowest aggregate prizemoney received, horses in the same weight penalty category with equal aggregate prize money shall be eliminated by lot.

DISCLAIMER:
Thoroughbred race dates are subject to change. Tasracing may from time to time rescind, annul, alter or vary any such race dates. Please check the Tasracing website for the latest information.

LEGEND:
 Night Meeting
 Twilight Meeting

APRIL			2YO Maiden	2YO	3YO Maiden	3YO	2YO&Up Maiden	Maiden/Class 1	Class 1	Class 3	Class 5	BM62	BM72	BM82	F & M	OPEN	OPEN DISTANCE
3rd	Sunday	UBET Park Hobart	TRC		1200m		1100m	2100m	1100m	1400m		1200m	1600m				
6th	Wednesday	UBET Racing Centre Launceston	TTC	1100m			1200m 1400m	1600m	1200m		1200m		1400m	1600m			
17th	Sunday	Tapeta Park	DRC				1000m 1150m	1880m	1350m	1150m		1650m	1000m	1350m			
20th	Wednesday	UBET Racing Centre Launceston	TTC				1200m 1600m		1200m	1600m	1400m		1200m 2100m			\$20k Quality HCP 1200m	
24th	Sunday	UBET Park Hobart	TRC		\$25k Autumn SW 1100m	\$25k Autumn SW 1100m	1100m 1400m		1400m	1200m					\$25k Autumn HCP 1100m		\$25k Open HCP 1600m
MAY			2YO Maiden	2YO	3YO Maiden	3YO	2YO&Up Maiden	Maiden/Class 1	Class 1	Class 3	Class 5	BM62	BM72	BM82	F & M	OPEN	OPEN DISTANCE
1st	Sunday	Tapeta Park	DRC				900m 1150m	1650m	1150m	1000m			1150m 1650m	1350m			
8th	Sunday	UBET Park Hobart	TRC		\$25k Autumn SW 1200m	\$25k Autumn HCP 1200m	1200m	2100m	1100m	1400m					\$25k Autumn QLTY 1200m		\$25k Open HCP 2100m
15th	Sunday	Tapeta Park	DRC				1000m 1350m	1650m	1350m	1150m		1000m	1350m	1650m			
22nd	Sunday	UBET Racing Centre Launceston	TTC		\$30k Sires Produce SW 1400m	\$30k SW&P 1400m	1200m 1600m			1600m			1200m			\$30k Autumn SW&P 1400m	\$30k St Leger Qty 2400m
29th	Sunday	UBET Park Hobart	TRC				1100m 1400m	2100m	1200m	1200m		1400m	1600m	1200m			
JUNE			2YO Maiden	2YO	3YO Maiden	3YO	2YO&Up Maiden	Maiden/Class 1	Class 1	Class 3	Class 5	BM62	BM72	BM82	F & M	OPEN	OPEN DISTANCE
5th	Sunday	Tapeta Park	DRC				900m 1150m	1650m	1000m	1350m		1150m	1000m 1880m				
12th	Sunday	UBET Racing Centre Launceston	TTC	1000m			1200m 1600m		1400m	1600m	1200m		1000m	1600m			
19th	Sunday	UBET Park Hobart	TRC			1200m	1100m 1400m	1600m	1200m	1400m			2100m	1400m			
26th	Sunday	Tapeta Park	DRC				900m 1150m	1880m	1150m	1000m		1650m	1150m	1880m			
JULY			2YO Maiden	2YO	3YO Maiden	3YO	2YO&Up Maiden	Maiden/Class 1	Class 1	Class 3	Class 5	BM62	BM72	BM82	F & M	OPEN	OPEN DISTANCE
3rd	Sunday	UBET Racing Centre LAUNCESTON	TTC	1100m			1100m 1400m	1600m	1400m	1100m			1600m	1200m			
10th	Sunday	UBET Park Hobart	TRC			1100m	1200m 1400m		1200m	1400m		2100m	1100m	1400m			
17th	Sunday	Tapeta Park	DRC				1150m 1350m	1650m	1000m	1150m		1350m	1650m	1150m			
24th	Sunday	UBET Park Hobart	TRC	1200m			1100m 1400m	2100m	1400m	1200m	1400m		1200m				
31st	Sunday	Tapeta Park	DRC				1150m 1650m	1880m	1350m	1650m		1000m 1880m	1150m	1350m			

Tasmanian Racing Club
Sunday, 3 April 2016
UBET Park Hobart

NOMS close 12 noon Tuesday, 29 Mar 2016
HCP declared by 3pm Wednesday, 30 Mar 2016
ACC close 9am Thursday, 31 Mar 2016
RIDERS close 12 noon Thursday, 31 Mar 2016

- 1 **3YO Maiden**
1200m
Of \$14,000 - \$9,100; \$2,800; \$1,400;
\$700
- 2 **2YO & Up Maiden**
1100m - Set Weights
Of \$14,000 - \$9,100; \$2,800; \$1,400;
\$700
- 3 **Maiden/Class 1**
2100m - Set Weights
Of \$14,000 - \$9,100; \$2,800; \$1,400;
\$700
- 4 **Class 1 Handicap**
1100m
Of \$14,000 - \$9,100; \$2,800; \$1,400;
\$700
- 5 **Class 3 Handicap**
1400m
Of \$14,000 - \$9,100; \$2,800; \$1,400;
\$700
- 6 **Benchmark 62 Handicap**
1200m
Of \$14,000 - \$9,100; \$2,800; \$1,400;
\$700
- 7 **Benchmark 72 Handicap**
1600m
Of \$14,000 - \$9,100; \$2,800; \$1,400;
\$700

Tasmanian Turf Club
Wednesday, 6 April 2016
UBET Racing Centre Launceston



NOMS close 12 noon Thursday, 31 Mar 2016
HCP declared by 3pm Friday, 1 Apr 2016
ACC close 9am Monday, 4 Apr 2016
RIDERS close 12 noon Monday, 4 Apr 2016

- 1 **2YO Maiden**
1100m - Set Weights
Of \$14,000 - \$9,100; \$2,800; \$1,400;
\$700
- 2 **2YO & Up Maiden**
1200m - Set Weights
Of \$14,000 - \$9,100; \$2,800; \$1,400;
\$700
- 3 **2YO & Up Maiden**
1400m - Set Weights
Of \$14,000 - \$9,100; \$2,800; \$1,400;
\$700
- 4 **Maiden/Class 1**
1600m - Set Weights
Of \$14,000 - \$9,100; \$2,800; \$1,400;
\$700
- 5 **Class 1 Handicap**
1200m
Of \$14,000 - \$9,100; \$2,800; \$1,400;
\$700
- 6 **Class 5 Handicap**
1200m
Of \$15,000 - \$9,750; \$3,000; \$1,500;
\$750
- 7 **Benchmark 72 Handicap**
1400m
Of \$14,000 - \$9,100; \$2,800; \$1,400;
\$700
- 8 **Benchmark 82 Handicap**
1600m
Of \$15,000 - \$9,750; \$3,000; \$1,500;
\$750

Devonport Racing Club
Sunday, 17 April 2016
Tapeta Park, Spreyton

NOMS close 12 noon Monday, 11 Apr 2016
HCP declared by 3pm Tuesday, 12 Apr 2016
ACC close 9am Wednesday, 13 Apr 2016
RIDERS close 12 noon Wednesday, 13 Apr 2016

- 1 **2YO & Up Maiden**
1000m - Set Weights
Of \$14,000 - \$9,100; \$2,800; \$1,400;
\$700
- 2 **2YO & Up Maiden**
1150m - Set Weights
Of \$14,000 - \$9,100; \$2,800; \$1,400;
\$700
- 3 **Maiden/Class 1**
1880m - Set Weights
Of \$14,000 - \$9,100; \$2,800; \$1,400;
\$700
- 4 **Class 1 Handicap**
1350m
Of \$14,000 - \$9,100; \$2,800; \$1,400;
\$700
- 5 **Class 3 Handicap**
1150m
Of \$14,000 - \$9,100; \$2,800; \$1,400;
\$700
- 6 **Benchmark 62 Handicap**
1650m
Of \$14,000 - \$9,100; \$2,800; \$1,400;
\$700
- 7 **Benchmark 72 Handicap**
1000m
Of \$14,000 - \$9,100; \$2,800; \$1,400;
\$700
- 8 **Benchmark 82 Handicap**
1350m
Of \$15,000 - \$9,750; \$3,000; \$1,500;
\$750

Tasmanian Turf Club
Wednesday, 20 April 2016
UBET Racing Centre Launceston



NOMS close 12 noon Thursday, 14 Apr 2016
HCP declared by 3pm Friday, 15 Apr 2016
ACC close 9am Monday, 18 Apr 2016
RIDERS close 12 noon Monday, 18 Apr 2016

- 1 **2YO & Up Maiden**
1200m - Set Weight
Of \$14,000 - \$9,100; \$2,800; \$1,400;
\$700
- 2 **2YO & Up Maiden**
1600m - Set Weight
Of \$14,000 - \$9,100; \$2,800; \$1,400;
\$700
- 3 **Class 1 Handicap**
1200m
Of \$14,000 - \$9,100; \$2,800; \$1,400;
\$700
- 4 **Class 3 Handicap**
1600m
Of \$14,000 - \$9,100; \$2,800; \$1,400;
\$700
- 5 **Class 5 Handicap**
1400m
Of \$15,000 - \$9,750; \$3,000; \$1,500;
\$750
- 6 **Benchmark 72 Handicap**
1200m
Of \$14,000 - \$9,100; \$2,800; \$1,400;
\$700
- 7 **Benchmark 72 Handicap**
2100m
Of \$14,000 - \$9,100; \$2,800; \$1,400;
\$700
- 8 **The Jack Frost Quality Handicap**
Apprentices cannot claim
1200m
Of \$20,000 - \$13,000; \$4,000; \$2,000;
\$1,000

Tasmanian Racing Club
Sunday, 24 April 2016
UBET Park Hobart

NOMS close 12 noon Monday, 18 Apr 2016
HCP declared by 3pm Tuesday, 19 Apr 2016
ACC close 9am Wednesday, 20 Apr 2016
RIDERS close 12 noon Wednesday, 20 Apr 2016

◆ **FEATURE RACES**

- 1 ◆ **AUTUMN 2YO PLATE**
Apprentices cannot claim
1100m - Set Weights C&G 57kgs, F 55kgs
Of \$25,000 - \$16,250; \$5,000; \$2,500;
\$1,250
- 2 ◆ **AUTUMN 3YO PLATE**
Apprentices cannot claim
1100m - Set Weights C&G 57kgs, F 55kgs
Of \$25,000 - \$16,250; \$5,000; \$2,500;
\$1,250
- 3 **2YO & Up Maiden**
1100m - Set Weights
Of \$14,000 - \$9,100; \$2,800; \$1,400; \$700
- 4 **2YO & Up Maiden**
1400m - Set Weights
Of \$14,000 - \$9,100; \$2,800; \$1,400; \$700
- 5 **Class 1 Handicap**
1400m
Of \$14,000 - \$9,100; \$2,800; \$1,400; \$700
- 6 **Class 3 Handicap**
1200m
Of \$14,000 - \$9,100; \$2,800; \$1,400; \$700
- 7 ◆ **FILLIES & MARES OPEN HANDICAP**
Apprentices cannot claim
1100m
Of \$25,000 - \$16,250; \$5,000; \$2,500;
\$1,250
- 8 ◆ **OPEN HANDICAP**
Apprentices cannot claim
1600m
Of \$25,000 - \$16,250; \$5,000; \$2,500;
\$1,250

Devonport Racing Club
Sunday, 1 May 2016
Tapeta Park, Spreyton

NOMS close 12 noon Tuesday, 26 Apr 2016
HCP declared by 3pm Wednesday, 27 Apr 2016
ACC close 9am Thursday, 28 May 2016
RIDERS close 12 noon Thursday, 28 May 2016

Tasmanian Racing Club
Sunday, 8 May 2016
UBET Park Hobart

NOMS close 12 noon Monday, 2 May 2016
HCP declared by 3pm Tuesday, 3 May 2016
ACC close 9am Wednesday, 4 May 2016
RIDERS close 12 noon Wednesday, 4 May 2016

Devonport Racing Club
Sunday, 15 May 2016
Tapeta Park, Spreyton

NOMS close 12 noon Monday, 9 May 2016
HCP declared by 3pm Tuesday, 10 May 2016
ACC close 9am Wednesday, 11 May 2016
RIDERS close 12 noon Wednesday, 11 May 2016

Tasmanian Turf Club
Sunday, 22 May 2016
UBET Racing Centre Launceston

NOMS close 12 noon Monday, 16 May 2016
HCP declared by 3pm Tuesday, 17 May 2016
ACC close 9am Wednesday, 18 May 2016
RIDERS close 12 noon Wednesday, 18 May 2016

Tasmanian Racing Club
Sunday, 29 May 2016
UBET Park Hobart

NOMS close 12 noon Monday, 23 May 2016
HCP declared by 3pm Tuesday, 24 May 2016
ACC close 9am Wednesday, 25 May 2016
RIDERS close 12 noon Wednesday, 25 May 2016

◆ **FEATURE RACES**

- 1 **2YO & Up Maiden**
900m - Set Weights
Of \$14,000 - \$9,100; \$2,800; \$1,400;
\$700
- 2 **2YO & Up Maiden**
1150m - Set Weights
Of \$14,000 - \$9,100; \$2,800; \$1,400;
\$700
- 3 **Maiden/Class 1**
1650m - Set Weights
Of \$14,000 - \$9,100; \$2,800; \$1,400;
\$700
- 4 **Class 1 Handicap**
1150m
Of \$14,000 - \$9,100; \$2,800; \$1,400;
\$700
- 5 **Class 3 Handicap**
1000m
Of \$14,000 - \$9,100; \$2,800; \$1,400;
\$700
- 6 **Benchmark 72 Handicap**
1150m
Of \$14,000 - \$9,100; \$2,800; \$1,400;
\$700
- 7 **Benchmark 72 Handicap**
1650m
Of \$14,000 - \$9,100; \$2,800; \$1,400;
\$700
- 8 **Benchmark 82 Handicap**
1350m
Of \$15,000 - \$9,750; \$3,000; \$1,500;
\$750

- 1 ◆ **AUTUMN 2YO CLASSIC**
Apprentices cannot claim
1200m - Set Weights, C&G 57kgs, F
55kgs
Of \$25,000 - \$16,250; \$5,000; \$2,500;
\$1,250
- 2 ◆ **AUTUMN 3YO CLASSIC**
Apprentices cannot claim
1200m - Handicap, C&G 57kgs,
F 55kgs
Of \$25,000 - \$16,250; \$5,000; \$2,500;
\$1,250
- 3 **2YO & Up Maiden**
1200m - Set Weights
Of \$14,000 - \$9,100; \$2,800; \$1,400;
\$700
- 4 **Maiden/Class 1**
2100m
Of \$14,000 - \$9,100; \$2,800; \$1,400;
\$700
- 5 **Class 1 Handicap**
1100m
Of \$14,000 - \$9,100; \$2,800; \$1,400;
\$700
- 6 **Class 3 Handicap**
1400m
Of \$14,000 - \$9,100; \$2,800; \$1,400;
\$700
- 7 ◆ **FILLIES & MARES QUALITY
HANDICAP**
Apprentices cannot claim
1200m
Of \$25,000 - \$16,250; \$5,000; \$2,500;
\$1,250
- 8 ◆ **OPEN HANDICAP**
Apprentices cannot claim
2100m
Of \$25,000 - \$16,250; \$5,000; \$2,500;
\$1,250

- 1 **2YO & Up Maiden**
1000m - Set Weights
Of \$14,000 - \$9,100; \$2,800; \$1,400;
\$700
- 2 **2YO & Up Maiden**
1350m - Set Weights
Of \$14,000 - \$9,100; \$2,800; \$1,400;
\$700
- 3 **Maiden/Class 1**
1650m - Set Weights
Of \$14,000 - \$9,100; \$2,800; \$1,400;
\$700
- 4 **Class 1 Handicap**
1350m
Of \$14,000 - \$9,100; \$2,800; \$1,400;
\$700
- 5 **Class 3 Handicap**
1150m
Of \$14,000 - \$9,100; \$2,800; \$1,400;
\$700
- 6 **Benchmark 62 Handicap**
1000m
Of \$14,000 - \$9,100; \$2,800; \$1,400;
\$700
- 7 **Benchmark 72 Handicap**
1350m
Of \$14,000 - \$9,100; \$2,800; \$1,400;
\$700
- 8 **Benchmark 82 Handicap**
1650m
Of \$15,000 - \$9,750; \$3,000; \$1,500;
\$750

◆ **FEATURE RACES**

- 1 ◆ **TASMANIAN SIRES PRODUCE**
For 2YO. Apprentices cannot claim
1400m - Set Weights
Of \$30,000 - \$18,150; \$5,400; \$2,700;
\$1,350; \$600; \$600; \$600; \$600
(refer race conditions on page 22)
- 2 ◆ **AUTUMN 3YO CLASSIC**
Apprentices cannot claim
1400m - Set Weights & Penalties
Of \$30,000 - \$18,150; \$5,400; \$2,700;
\$1,350; \$600; \$600; \$600; \$600
(refer race conditions on page 23)
- 3 **2YO & Up Maiden**
1200m - Set Weights
Of \$14,000 - \$9,100; \$2,800; \$1,400;
\$700
- 4 **2YO & Up Maiden**
1600m - Set Weights
Of \$14,000 - \$9,100; \$2,800; \$1,400;
\$700
- 5 **Class 3 Handicap**
1600m
Of \$14,000 - \$9,100; \$2,800; \$1,400;
\$700
- 6 **Benchmark 72 Handicap**
1200m
Of \$14,000 - \$9,100; \$2,800; \$1,400;
\$700
- 7 ◆ **AUTUMN OPEN CLASSIC**
Apprentices cannot claim
1400m - Set Weights & Penalties
Of \$30,000 - \$18,150; \$5,400; \$2,700;
\$1,350; \$600; \$600; \$600; \$600
(refer race conditions on page 23)
- 8 ◆ **TASMANIAN ST LEGER**
Apprentices cannot claim
2400m - Quality Handicap
Of \$30,000 - \$18,150; \$5,400; \$2,700;
\$1,350; \$600; \$600; \$600; \$600
(refer race conditions on page 22)

- 1 **2YO & Up Maiden**
1100m - Set Weights
Of \$14,000 - \$9,100; \$2,800; \$1,400;
\$700
- 2 **2YO & Upwards Maiden**
1400m - Set Weights
Of \$14,000 - \$9,100; \$2,800; \$1,400;
\$700
- 3 **Maiden/Class 1**
2100m - Set Weights
Of \$14,000 - \$9,100; \$2,800; \$1,400;
\$700
- 4 **Class 1 Handicap**
1200m
Of \$14,000 - \$9,100; \$2,800; \$1,400;
\$700
- 5 **Class 3 Handicap**
1200m
Of \$14,000 - \$9,100; \$2,800; \$1,400;
\$700
- 6 **Benchmark 62 Handicap**
1400m
Of \$14,000 - \$9,100; \$2,800; \$1,400;
\$700
- 7 **Benchmark 72 Handicap**
1600m
Of \$14,000 - \$9,100; \$2,800; \$1,400;
\$700
- 8 **Benchmark 82 Handicap**
1200m
Of \$15,000 - \$9,750; \$3,000; \$1,500;
\$750

Devonport Racing Club
Sunday, 5 June 2016
 Tapeta Park, Spreyton

NOMS close 12 noon Monday, 30 May 2016
 HCP declared by 3pm Tuesday, 31 May 2016
 ACC close 9am Wednesday, 1 June 2016
 RIDERS close 12 noon Wednesday, 1 June 2016

- 1 **2YO & Upwards Maiden**
 900m - Set Weights
 Of \$14,000 - \$9,100; \$2,800; \$1,400;
 \$700
- 2 **2YO & Upwards Maiden**
 1150m - Set Weights
 Of \$14,000 - \$9,100; \$2,800; \$1,400;
 \$700
- 3 **Maiden/Class 1**
 1650m - Set Weights
 Of \$14,000 - \$9,100; \$2,800; \$1,400;
 \$700
- 4 **Class 1 Handicap**
 1000m
 Of \$14,000 - \$9,100; \$2,800; \$1,400;
 \$700
- 5 **Class 3 Handicap**
 1350m
 Of \$14,000 - \$9,100; \$2,800; \$1,400;
 \$700
- 6 **Benchmark 62 Handicap**
 1150m
 Of \$14,000 - \$9,100; \$2,800; \$1,400;
 \$700
- 7 **Benchmark 72 Handicap**
 1000m
 Of \$14,000 - \$9,100; \$2,800; \$1,400;
 \$700
- 8 **Benchmark 72 Handicap**
 1880m
 Of \$14,000 - \$9,100; \$2,800; \$1,400;
 \$700

Tasmanian Turf Club
Sunday, 12 June 2016
 UBET Racing Centre Launceston

NOMS close 12 noon Monday, 6 June 2016
 HCP declared by 3pm Tuesday, 7 June 2016
 ACC close 9am Wednesday, 8 June 2016
 RIDERS close 12 noon Wednesday, 8 June 2016

- 1 **2YO Maiden**
 1000m - Set Weights
 Of \$14,000 - \$9,100; \$2,800; \$1,400;
 \$700
- 2 **2YO & Up Maiden**
 1200m - Set Weights
 Of \$14,000 - \$9,100; \$2,800; \$1,400;
 \$700
- 3 **2YO & Up Maiden**
 1600m - Set Weights
 Of \$14,000 - \$9,100; \$2,800; \$1,400;
 \$700
- 4 **Class 1 Handicap**
 1400m
 Of \$14,000 - \$9,100; \$2,800; \$1,400;
 \$700
- 5 **Class 3 Handicap**
 1600m
 Of \$14,000 - \$9,100; \$2,800; \$1,400;
 \$700
- 6 **Class 5 Handicap**
 1200m
 Of \$15,000 - \$9,750; \$3,000; \$1,500;
 \$750
- 7 **Benchmark 72 Handicap**
 1000m
 Of \$14,000 - \$9,100; \$2,800; \$1,400;
 \$700
- 8 **Benchmark 82 Handicap**
 1600m
 Of \$15,000 - \$9,750; \$3,000; \$1,500;
 \$750

Tasmanian Racing Club
Sunday, 19 June 2016
 UBET Park Hobart

NOMS close 12 noon Tuesday, 14 June 2016
 HCP declared by 3pm Wednesday, 15 June 2016
 ACC close 9am Thursday, 16 June 2016
 RIDERS close 12 noon Thursday, 16 June 2016

- 1 **3YO Maiden**
 1200m - Set Weights
 Of \$14,000 - \$9,100; \$2,800; \$1,400;
 \$700
- 2 **2YO & Up Maiden**
 1100m - Set Weights
 Of \$14,000 - \$9,100; \$2,800; \$1,400;
 \$700
- 3 **2YO & Up Maiden**
 1400m - Set Weights
 Of \$14,000 - \$9,100; \$2,800; \$1,400;
 \$700
- 4 **Maiden/Class 1 Handicap**
 1600m
 Of \$14,000 - \$9,100; \$2,800; \$1,400;
 \$700
- 5 **Class 1 Handicap**
 1200m
 Of \$14,000 - \$9,100; \$2,800; \$1,400;
 \$700
- 6 **Class 3 Handicap**
 1400m
 Of \$14,000 - \$9,100; \$2,800; \$1,400;
 \$700
- 7 **Benchmark 72 Handicap**
 2100m
 Of \$14,000 - \$9,100; \$2,800; \$1,400;
 \$700
- 8 **Benchmark 82 Handicap**
 1400m
 Of \$15,000 - \$9,750; \$3,000; \$1,500;
 \$750

Devonport Racing Club
Sunday, 26 June 2016
 Tapeta Park, Spreyton

NOMS close 12 noon Monday, 20 June 2016
 HCP declared by 3pm Tuesday, 21 June 2016
 ACC close 9am Wednesday, 22 June 2016
 RIDERS close 12 noon Wednesday, 22 June 2016

- 1 **2YO & Upwards Maiden**
 900m - Set Weights
 Of \$14,000 - \$9,100; \$2,800; \$1,400;
 \$700
- 2 **2YO & Upwards Maiden**
 1150m - Set Weights
 Of \$14,000 - \$9,100; \$2,800; \$1,400;
 \$700
- 3 **Maiden/Class 1**
 1880m - Set Weights
 Of \$14,000 - \$9,100; \$2,800; \$1,400;
 \$700
- 4 **Class 1 Handicap**
 1150m
 Of \$14,000 - \$9,100; \$2,800; \$1,400;
 \$700
- 5 **Class 3 Handicap**
 1000m
 Of \$14,000 - \$9,100; \$2,800; \$1,400;
 \$700
- 6 **Benchmark 62 Handicap**
 1650m
 Of \$14,000 - \$9,100; \$2,800; \$1,400;
 \$700
- 7 **Benchmark 72 Handicap**
 1150m
 Of \$14,000 - \$9,100; \$2,800; \$1,400;
 \$700
- 8 **Benchmark 82 Handicap**
 1880m
 Of \$15,000 - \$9,750; \$3,000; \$1,500;
 \$750

Escape TO LAUNCESTON'S ONE AND ONLY RESORT



4.5* **FROM \$149** PER NIGHT

5 Restaurants • 4 Bars • Driving Range • Paddock to Plate Dining
 Tennis Courts • Indoor Pool, Spa & Health Centre • Horse Riding
 • Trout Fishing • 18 Hole Golf Course • Boutique Casino

To book call 1800 030 211 or visit countryclubtasmania.com.au

 **Country Club**
TASMANIA

*Subject to availability.

Tasmanian Turf Club
Sunday, 3 July 2016
 UBET Racing Centre Launceston

NOMS close 12 noon Monday, 27 June 2016
 HCP declared by 3pm Tuesday, 28 June 2016
 ACC close 9am Wednesday, 29 June 2016
 RIDERS close 12 noon Wednesday, 29 June 2016

- 1 2YO Maiden**
1100m - Set Weights
Of \$14,000 - \$9,100; \$2,800; \$1,400;
\$700
- 2 2YO & Up Maiden**
1100m - Set Weights
Of \$14,000 - \$9,100; \$2,800; \$1,400;
\$700
- 3 2YO & Up Maiden**
1400m - Set Weights
Of \$14,000 - \$9,100; \$2,800; \$1,400;
\$700
- 4 Maiden/Class 1**
1600m - Set Weights
Of \$14,000 - \$9,100; \$2,800; \$1,400;
\$700
- 5 Class 1 Handicap**
1400m
Of \$14,000 - \$9,100; \$2,800; \$1,400;
\$700
- 6 Class 3 Handicap**
1100m
Of \$14,000 - \$9,100; \$2,800; \$1,400;
\$700
- 7 Benchmark 72 Handicap**
1600m
Of \$14,000 - \$9,100; \$2,800; \$1,400;
\$700
- 8 Benchmark 82 Handicap**
1200m
Of \$15,000 - \$9,750; \$3,000; \$1,500;
\$750

Tasmanian Racing Club
Sunday, 10 July 2016
 UBET Park Hobart

NOMS close 12 noon Monday, 4 July 2016
 HCP declared by 3pm Tuesday, 5 July 2016
 ACC close 9am Wednesday, 6 July 2016
 RIDERS close 12 noon Wednesday, 6 July 2016

- 1 3YO Maiden**
1100m - Set Weights
Of \$14,000 - \$9,100; \$2,800; \$1,400;
\$700
- 2 2YO & Up Maiden**
1200m - Set Weights
Of \$14,000 - \$9,100; \$2,800; \$1,400;
\$700
- 3 2YO & Up Maiden**
1400m - Set Weights
Of \$14,000 - \$9,100; \$2,800; \$1,400;
\$700
- 4 Class 1 Handicap**
1200m
Of \$14,000 - \$9,100; \$2,800; \$1,400;
\$700
- 5 Class 3 Handicap**
1400m
Of \$14,000 - \$9,100; \$2,800; \$1,400;
\$700
- 6 Benchmark 62 Handicap**
2100m
Of \$14,000 - \$9,100; \$2,800; \$1,400;
\$700
- 7 Benchmark 72 Handicap**
1100m
Of \$14,000 - \$9,100; \$2,800; \$1,400;
\$700
- 8 Benchmark 82 Handicap**
1400m
Of \$15,000 - \$9,750; \$3,000; \$1,500;
\$750

Devonport Racing Club
Sunday, 17 July 2016
 Tapeta Park, Spreyton

NOMS close 12 noon Monday, 11 July 2016
 HCP declared by 3pm Tuesday, 12 July 2016
 ACC close 9am Wednesday, 13 July 2016
 RIDERS close 12 noon Wednesday, 13 July 2016

- 1 2YO & Upwards Maiden**
1150m - Set Weights
Of \$14,000 - \$9,100; \$2,800; \$1,400;
\$700
- 2 2YO & Upwards Maiden**
1350m - Set Weights
Of \$14,000 - \$9,100; \$2,800; \$1,400;
\$700
- 3 Maiden/Class 1**
1650m - Set Weights
Of \$14,000 - \$9,100; \$2,800; \$1,400;
\$700
- 4 Class 1 Handicap**
1000m
Of \$14,000 - \$9,100; \$2,800; \$1,400;
\$700
- 5 Class 3 Handicap**
1150m
Of \$14,000 - \$9,100; \$2,800; \$1,400;
\$700
- 6 Benchmark 62 Handicap**
1350m
Of \$14,000 - \$9,100; \$2,800; \$1,400;
\$700
- 7 Benchmark 72 Handicap**
1650m
Of \$14,000 - \$9,100; \$2,800; \$1,400;
\$700
- 8 Benchmark 82 Handicap**
1150m
Of \$15,000 - \$9,750; \$3,000; \$1,500;
\$750

Tasmanian Racing Club
Sunday, 24 July 2016
 UBET Park Hobart

NOMS close 12 noon Monday, 18 July 2016
 HCP declared by 3pm Tuesday, 19 July 2016
 ACC close 9am Wednesday, 20 July 2016
 RIDERS close 12 noon Wednesday, 20 July 2016

- 1 2YO Maiden**
1200m - Set Weights
Of \$14,000 - \$9,100; \$2,800; \$1,400;
\$700
- 2 2YO & Up Maiden**
1100m - Set Weights
Of \$14,000 - \$9,100; \$2,800; \$1,400;
\$700
- 3 2YO & Up Maiden**
1400m - Set Weights
Of \$14,000 - \$9,100; \$2,800; \$1,400;
\$700
- 4 Maiden / Class 1**
2100m - Set Weights
Of \$14,000 - \$9,100; \$2,800; \$1,400;
\$700
- 5 Class 1 Handicap**
1400m
Of \$14,000 - \$9,100; \$2,800; \$1,400;
\$700
- 6 Class 3 Handicap**
1200m
Of \$14,000 - \$9,100; \$2,800; \$1,400;
\$700
- 7 Class 5 Handicap**
1400m
Of \$15,000 - \$9,750; \$3,000; \$1,500;
\$750
- 8 Benchmark 72 Handicap**
1200m
Of \$14,000 - \$9,100; \$2,800; \$1,400;
\$700

Devonport Racing Club
Sunday, 31 July 2016
 Tapeta Park, Spreyton

NOMS close 12 noon Monday, 25 July 2016
 HCP declared by 3pm Tuesday, 26 July 2016
 ACC close 9am Wednesday, 27 July 2016
 RIDERS close 12 noon Wednesday, 27 July 2016

- 1 2YO & Upwards Maiden**
1150m - Set Weights
Of \$14,000 - \$9,100; \$2,800; \$1,400;
\$700
- 2 2YO & Upwards Maiden**
1650m - Set Weights
Of \$14,000 - \$9,100; \$2,800; \$1,400;
\$700
- 3 Maiden/Class 1**
1880m - Set Weights
Of \$14,000 - \$9,100; \$2,800; \$1,400;
\$700
- 4 Class 1 Handicap**
1350m
Of \$14,000 - \$9,100; \$2,800; \$1,400;
\$700
- 5 Class 3 Handicap**
1650m
Of \$14,000 - \$9,100; \$2,800; \$1,400;
\$700
- 6 Benchmark 62 Handicap**
1000m
Of \$14,000 - \$9,100; \$2,800; \$1,400;
\$700
- 7 Benchmark 62 Handicap**
1880m
Of \$14,000 - \$9,100; \$2,800; \$1,400;
\$700
- 8 Benchmark 72 Handicap**
1150m
Of \$14,000 - \$9,100; \$2,800; \$1,400;
\$700
- 9 Benchmark 82 Handicap**
1350m
Of \$15,000 - \$9,750; \$3,000; \$1,500;
\$750

APRIL 2016

Sunday 3	TRC
Wednesday 6	TTC
Sunday 17	DRC
Wednesday 20	TTC
Sunday 24	TRC

MAY 2016

Sunday 1	DRC
Sunday 8	TRC
Sunday 15	DRC
Sunday 22	TTC
Sunday 29	TRC

JUNE 2016

Sunday 5	DRC
Sunday 12	TTC
Sunday 19	TRC
Sunday 26	DRC

JULY 2016

Sunday 3	TTC
Sunday 10	TRC
Sunday 17	DRC
Sunday 24	TRC
Sunday 31	DRC



BARRIER TRIAL DATES
GRASS GALLOP DATES

barrier trial dates *

* All Barrier Trials subject to weather conditions and track availability.
Trainers will be advised by SMS of any changes and these will also be posted on www.tasracing.com.au

Trial start times are 10.30am

APRIL 2016

Devonport Racing Club (Spreyton)	Tue 5 Apr	Noms close 9am Mon 4 Apr
Tasmanian Racing Club (Hobart)	Tue 12 Apr	Noms close 9am Mon 11 Apr
Tasmanian Turf Club (Longford)	Tue 19 Apr	Noms close 9am Mon 18 Apr
Tasmanian Racing Club (Hobart)	Tue 26 Apr	Noms close 9am Fri 22 Apr

MAY 2016

Devonport Racing Club (Spreyton)	Tue 3 May	Noms close 9am Mon 2 May
Tasmanian Racing Club (Hobart)	Tue 10 May	Noms close 9am Mon 9 May
Tasmanian Turf Club (Longford)	Tue 17 May	Noms close 9am Mon 16 May
Tasmanian Racing Club (Hobart)	Tue 24 May	Noms close 9am Mon 23 May
Devonport Racing Club (Spreyton)	Tue 31 May	Noms close 9am Mon 30 May

JUNE 2016

Tasmanian Racing Club (Hobart)	Tue 7 Jun	Noms close 9am Mon 6 Jun
Devonport Racing Club (Spreyton)	Tue 14 Jun	Noms close 9am Fri 10 Jun
Tasmanian Racing Club (Hobart)	Tue 21 Jun	Noms close 9am Mon 20 Jun
Devonport Racing Club (Spreyton)	Tue 28 Jun	Noms close 9am Mon 27 Jun

JULY 2016

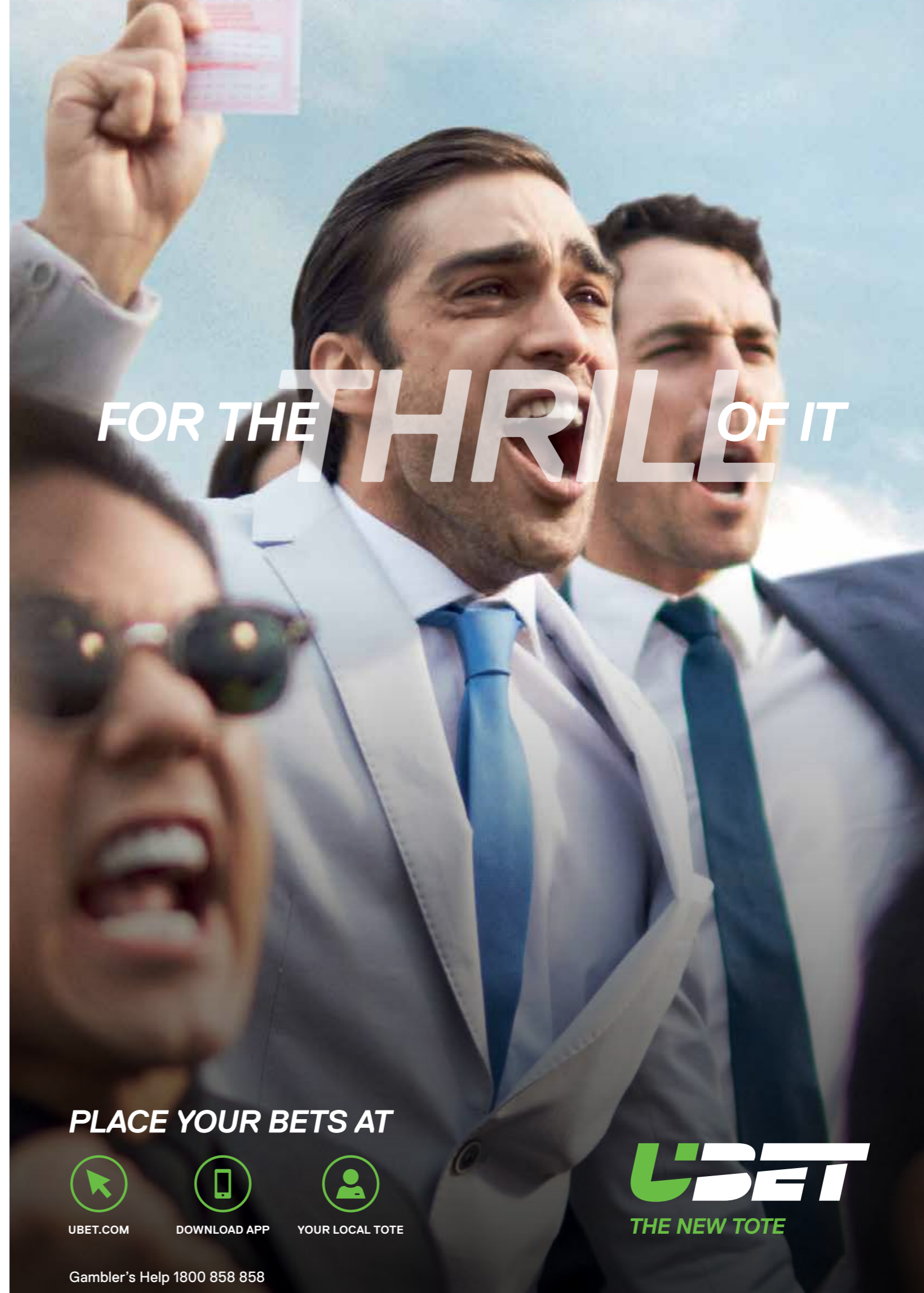
Tasmanian Racing Club (Hobart)	Tue 5 Jul	Noms close 9am Mon 4 Jul
Devonport Racing Club (Spreyton)	Tue 12 Jul	Noms close 9am Mon 11 Jul
Tasmanian Racing Club (Hobart)	Tue 19 Jul	Noms close 9am Mon 18 Jul
Devonport Racing Club (Spreyton)	Tue 26 Jul	Noms close 9am Mon 25 Jul

PLEASE NOTE: TRAINERS ARE TO LODGE BARRIER TRIAL SCRATCHINGS WITH RISA BY 7:30 AM ON THE DAY OF THE BARRIER TRIALS.

grass gallop dates

Tasmanian Turf Club (Longford) Tuesday and Friday See Track Manager, Robert Hutchins

Tasmanian Racing Club (Hobart) Available each non raceday Tuesday and Friday on request.
Requests must be made prior to 2pm on the preceding day to Tasracing.



FOR THE **THRILL** OF IT

PLACE YOUR BETS AT



UBET.COM



DOWNLOAD APP



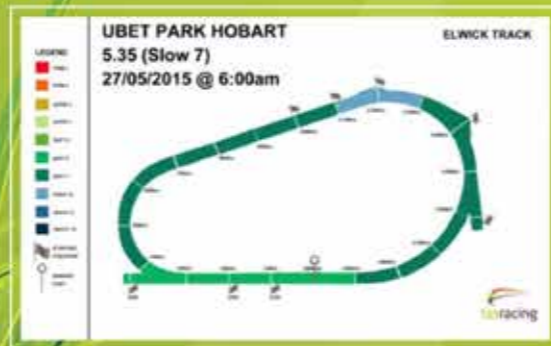
YOUR LOCAL TOTE

UBET
THE NEW TOTE



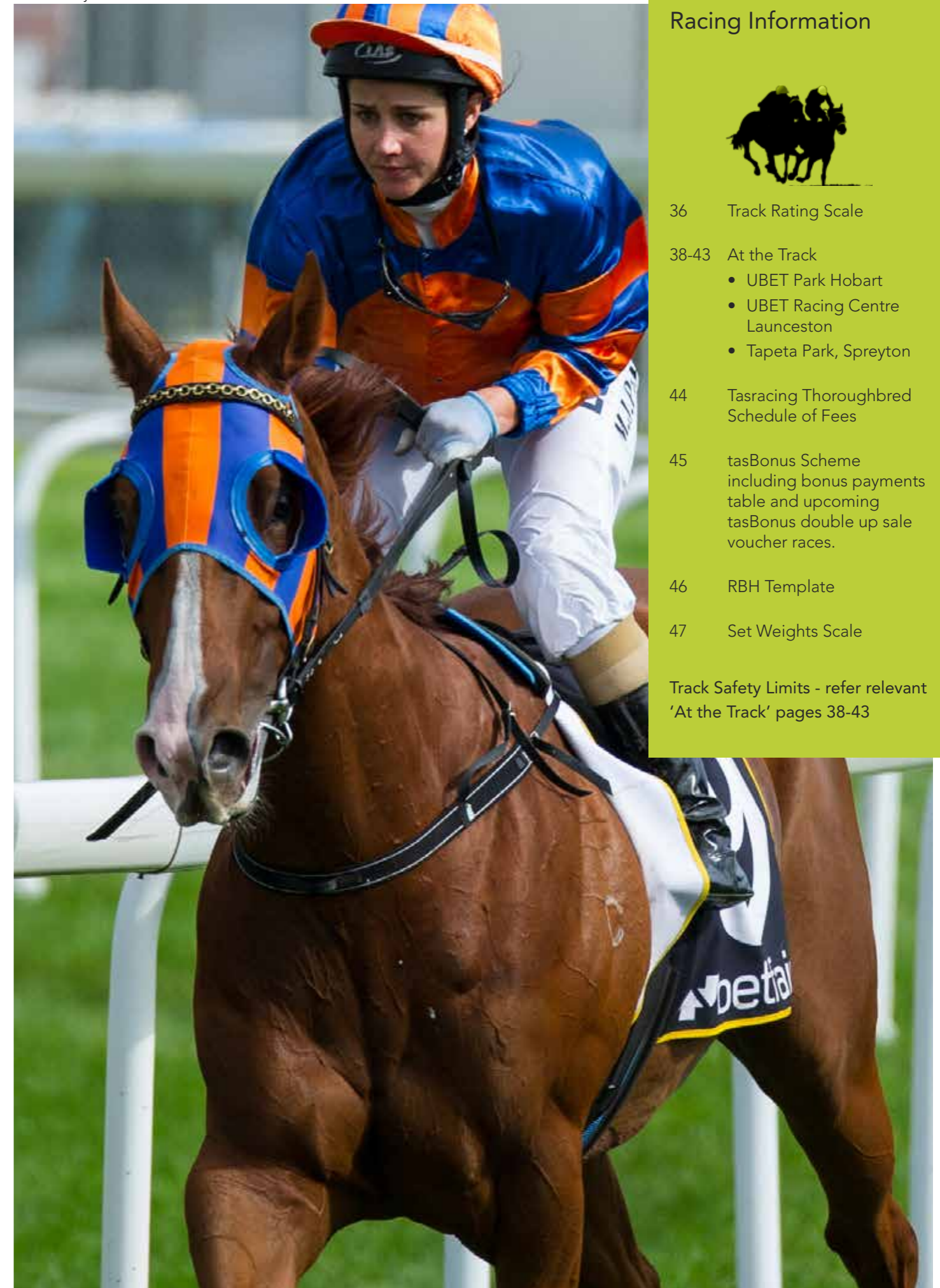
track rating scale

Rating		Description of Numerical Rating
	1	
FIRM	2	Dry hard track
FIRM	3	Firm track with reasonable grass coverage
GOOD	4	Track with good grass coverage and cushion
GOOD	5	Track with some give in it
SOFT	6	Track with a reasonable amount of give in it
SOFT	7	Moist but not a badly affected track
SOFT	8	More rain-affected track that will chop out
HEAVY	9	Rain affected track that horses will get into
HEAVY	10	Wet track getting into a squelchy area
HEAVY	10	Heaviest category track, very wet, towards saturation



For the latest track ratings visit <https://tasracing.com.au>

Michelle Payne on Keukenof



Section 2 Racing Information



- 36 Track Rating Scale
- 38-43 At the Track
 - UBET Park Hobart
 - UBET Racing Centre Launceston
 - Tapeta Park, Spreyton
- 44 Tasracing Thoroughbred Schedule of Fees
- 45 tasBonus Scheme including bonus payments table and upcoming tasBonus double up sale voucher races.
- 46 RBH Template
- 47 Set Weights Scale
- Track Safety Limits - refer relevant 'At the Track' pages 38-43



UBET Park Hobart

UBET Park Hobart is located just 12 minutes from the Hobart CBD and 23 km's north of the Hobart Airport. It is a unique venue combining both modern facilities with a sense of history as you overlook Hobart's historic racecourse, the Derwent River, Mt Wellington and the skyline foothills.

On site parking offers plenty of free accessible parking, and incorporates numerous bars, sensational viewing platforms and on course betting facilities.

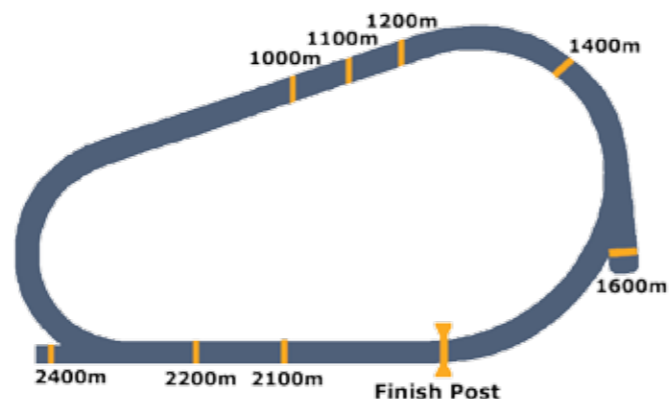
THE TRACK

UBET Park Hobart offers a gently underlating track that rises from the 900m - 1000m marks producing a testing run to the line. The track is predominately a blend of nui ryegrass and impact ryegrass.

Direction: Anti-clockwise
 Circumference: 1998m
 Straight: 315m
 Track Width: Approx 22m
 Surface: Turf

TRACK RECORDS

DISTANCE	TIME	HOBART (Elwick Track)	DATE
900M	0-52.50	La Molokai	04/04/1998
1000M	0-57.71	Cherry Wild	31/10/2004
1100M	1-02.96	Dramaway	16/12/2001
1200M	1-09.77	Zarina Boy	10/10/2004
1400M	1-23.20	O'Donnell	13/11/1999
1600M	1-35.41	Lord Baracus	03/02/2002
2100M	2-08.04	Our Dashing Dane	14/02/2005
2200M	2-14.53	True Courser	13/02/2006
2400M	2-27.65	St Andrews	11/02/2002



TRACK SAFETY LIMITS

HOBART	Elwick (Course Proper)						
	Rail Position	True	1-3m	4m	5m	6m	7m
2400m	17	16	14	13	12	11	10
2200m	16	15	14	13	12	11	10
2100m	15	14	14	13	12	11	10
1600m	14	14	13	12	11	11	10
1400m	14	14	14	13	12	11	10
1200m	15	14	14	13	12	11	10
1100m	15	14	14	13	12	11	10
1000m	12	12	11	10	10	10	10
900m	12	11	10	10	10	9	9

HOBART	Derwent (Inside Track)
2080m	11
1550m	10
1400m	10
1100m	11
940m	11

- In the event of a rail having to be moved or for any other safety reason, the Chairman of Stewards may re-assess the field limits accordingly.
- Field limits for all 2YO events programmed between the first day of the current racing season (1st August) and the last day of the calendar year (31st Dec) inclusive, will be reduced by two (2) runners. (Excluding 1000 metre starts).

NOTE:

When the moveable rail is not in the true position, Tasracing may opt to run races at approximate distances. This will permit the barrier stalls to be placed at the farthest distance from turns. In such cases, field limits may be reassessed by Stewards.

RACE DATES (APR-JUL)

April 2016	May 2016	June 2016	July 2016
Sunday 3	Sunday 8	Sunday 19	Sunday 10
Sunday 24	Sunday 29		Sunday 24

BARRIER TRIAL DATES (APR-JUL)

Trials commence at 10.30am

April 2016	May 2016	June 2016	July 2016
Tuesday 12	Tuesday 10	Tuesday 7	Tuesday 5
Tuesday 26	Tuesday 24	Tuesday 21	Tuesday 19

All Barrier Trials subject to weather conditions and track availability.

Trainers will be advised by SMS of any changes and these will also be posted on www.tasracing.com.au.

GRASS GALLOPS

Available each non raceday Tuesday and Friday on request. Requests must be made prior to 2pm on the preceding day to Tasracing.

JUMP OUTS

Available post official trials on request. Requests must be made prior to 2pm on the preceding day to Tasracing.



UBET Racing Centre Launceston

UBET Racing Centre Launceston is located approximately 3 kilometres from the heart of Launceston City in Jellico Street, Mowbray.

Launceston is the second largest city in Tasmania and is an ideal base from which to experience essential Tasmanian historic villages, national trust properties, wilderness, arts, markets, national parks, breath-taking scenery and internationally acclaimed food and wine grown in a clean, unspoilt environment. Launceston is a thriving City with accommodation of an international standard.

THE TRACK

UBET Racing Centre Launceston's surface showcases one of Tasmania's home grown exports, 'Strathayr' turf which is highly respected for its durability and consistency.

- Direction: Anti-clockwise
- Circumference: 1817m
- Straight: 250m
- Track Width: Approx 25m
- Surface: Turf - Strathayr

TRACK RECORDS

Distance	Time	LAUNCESTON	Date
1100M	1-03.79	Admiral	15/01/2015
1200M	1-09.15	Hellova Street	03/12/2015
1400M	1-22.67	I Love It	21/02/2016
1600M	1-35.16	Geegees Blackflash	31/12/2013
2100M	2-09.91	Sh'Bourne Leader	25/11/2010
2400M	2-29.67	Genuine Lad	25/02/2015



TRACK SAFETY LIMITS

LAUNCESTON	DAY MEETINGS (Prior to Sunset)									* NIGHT MEETINGS (After Sunset)									
	Rail Position	True	1m	2m	3m	4m	5m	6m	7m	8-9m	True	1m	2m	3m	4m	5m	6m	7m	8-9m
2400m	16	16	16	16	16	16	16	16	14	14	12	12	12	12	12	12	12	11	11
2100m	15	14	14	14	14	14	14	14	12	10	12	12	12	12	12	12	12	11	10
1600m	14	14	14	14	14	14	14	14	14	14	12	12	12	12	12	12	12	11	11
1400m	14	14	14	14	14	14	14	14	14	14	12	12	12	12	12	12	12	11	11
1200m	14	14	14	14	14	14	14	14	14	14	12	12	12	12	12	12	12	11	11
1100m	10	10	10	10	10	10	10	10	10	10	10	10	10	10	10	10	10	10	10

- In the event of a rail having to be moved or for any other safety reason, the Chairman of Stewards may re-assess the field limits accordingly.
- * Day Meeting field limits will apply for the following:
Open, Group & Listed races (Excluding 2YO races)
- Field limits for all 2YO events programmed between the first day of the current racing season (1st August) and the last day of the calendar year (31st Dec) inclusive, will be reduced by two (2) runners. (Excluding 1100 metre start).

LONGFORD

All distances 8

NOTE: When the moveable rail is not in the true position, Tasracing may opt to run races at approximate distances. This will permit the barrier stalls to be placed at the farthest distance from turns. In such cases, field limits may be reassessed by Stewards.

RACE DATES (APR-JUL)

April 2016	May 2016	June 2016	July 2016
Wednesday 6	Sunday 22	Sunday 12	Sunday 3
Wednesday 20			

BARRIER TRIAL DATES - (LONGFORD) (APR-JUL)

Trials commence at 10.30am

April 2016	May 2016	June 2016	July 2016
Tuesday 19	Tuesday 17		

All Barrier Trials subject to weather conditions and track availability. Trainers will be advised by SMS of any changes and these will also be posted on www.tasracing.com.au.

GRASS GALLOPS - (LONGFORD)

Available Tuesday and Friday on request. Contact Course Ranger Robert Hutchins on 6391 1755

JUMP OUTS

Available each non race day after 10:00 am and on Wednesday and Saturday after 9:00 am unless otherwise specified by the track steward.



Tapeta Park, Spreyton

The Devonport Racing Club is situated only 9 minutes from the centre of Devonport and only 14 minutes from the Spirit of Tasmania's dock.

The DRC offers free parking, on course betting facilities, a bar and bistro and an upstairs function centre enjoying panoramic views of the track.

THE TRACK

Tapeta Park, Spreyton, Devonport, features an all-weather, synthetic surface with no demonstrated track bias, allowing winners from all positions in running and critically facilitates performance consistent with exposed form.

Direction: Anti-clockwise
 Circumference: 1459m
 Straight: 305m
 Track Width: 18m
 Surface: Synthetic - Tapeta



TRACK RECORDS

Distance	Time	DEVONPORT	Date
900M	0-52.79	Count Out	26/06/2015
1000M	0-58.15	Count Out	07/07/2015
1150M	1-07.24	Bionic Star	10/06/2012
1350M	1-20.27	Sahara Girl	19/07/2015
1650M	1-40.65	Will's Power	10/06/2012
1880M	1-56.25	Am I There Yet	17/06/2015
2360M	2-30.52	Holy Cat	07/07/2015

TRACK SAFETY LIMITS

DEVONPORT	
Rail Position	True
2360m	14
1880m	14
1650m	14
1350m	10
1150m	14
1000m	14
900m	14

1. For any other safety reason, the Chairman of Stewards may re-assess the field limits accordingly.
2. Field limits for all 2YO events programmed between the first day of the current racing season (1st August) and the last day of the calendar year (31st Dec) inclusive, will be reduced by two (2) runners.

RACE DATES (APR-JUN)

April 2016	May 2016
Sunday 17	Sunday 1
	Sunday 15

June 2016	July 2016
Sunday 5	Sunday 17
Sunday 26	Sunday 31

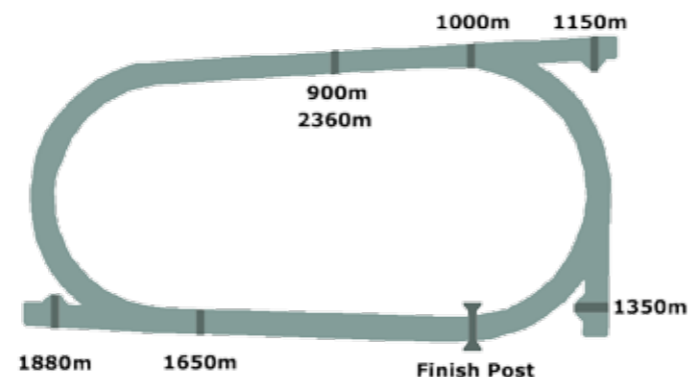
BARRIER TRIAL DATES (APR-JUN)

Trials commence at 10.30am

April 2016	May 2016
Tuesday 5	Tuesday 3
	Tuesday 31

June 2016	July 2016
Tuesday 14	Tuesday 12
Tuesday 28	Tuesday 26

All Barrier Trials subject to weather conditions and track availability. Trainers will be advised by SMS of any changes and these will also be posted on www.tasracing.com.au.



Tasracing thoroughbred schedule of fees 2016

	FEE	inc GST
Grass Gallops		
	\$7.00	\$7.70
Jump Outs		
With Barrier Staff Provided	\$40.00	\$44.00
Trials		
Trial fee	\$100.00	\$110.00
Trial Scratching fee	\$50.00	\$55.00
Scratching fee with Vet Certificate *	Free	Free

* Vet Certificate must be provided within 5 working days

Standard Race (excluding Group, Listed and Feature Races)	FEE	inc GST
Nomination	Free	Free
Non-acceptance	\$100	\$110
Scratching Fee (Pre 4pm day prior to raceday)	\$100	\$110
Scratching Fee (Post 4pm day prior to raceday)	\$150	\$165
Scratching Fee – Vet Certificate	OPTION 1	\$88 (including GST) with NO stand-down period. Refer option condition No. 1
Scratching Fee – Vet Certificate	OPTION 2	Free; with a 30-day stand-down period. The horse is ineligible to race for 30 days from the final scratching time of the race meeting for which it was nominated. Refer option conditions No's 1 & 2

Option Conditions:

- Both options are subject to a veterinary certificate being supplied not later than 5pm on the fifth business day following the day of the running of the race from which the horse was withdrawn. E.g. Friday following a Sunday meeting.
- The horse will be ineligible to compete in any Tasmanian race meeting for 30 days from the final scratching time of the race meeting.

Group, Listed and Feature Races over \$100,000	FEE	inc GST
Nomination fee		
\$25,000 to \$99,999	Nil	Nil
\$100,000 to \$149,999	\$150.00	\$165.00
\$150,000 to \$199,999	\$200.00	\$220.00
\$200,000 and above	\$400.00	\$440.00
Acceptance fee	1% of the advertised prizemoney for races of \$100,000 or more	
Scratching with Vet Certificate	Nil	Nil
Scratching Fee (Group, Listed and Feature Races only)	50 % of the final acceptance fee for the race or \$165 (inc GST), whichever may be the greater amount	

All fees exclude GST, unless otherwise stated

tasBonus scheme



ELIGIBILITY

Yearlings that qualify for the scheme are:

- Tasmanian-sired (Tasmanian-based sire)
- Tasmanian-bred (mare must be Tasmanian-owned), based on Australian Stud Book registered breeder location
- Catalogued for sale at the Tasmanian Yearling Sale (any breeding)

COSTS

Breeder Nomination: \$220 (incl GST)

Owner Nomination: \$330 (incl GST)

A horse may be only breeder nominated or only owner nominated or both. A once-off fee is paid to Tasracing when the horse is a yearling and the horse then becomes eligible for a bonus whilst it is a 2, 3 and 4 year old, for its maiden win or for one of any special bonus races.

SPECIAL BONUS RACES

Special bonus races will offer owners and breeders an additional \$4,000 (\$3,000 owner/\$1,000 breeder) bonus for non-maiden horses winning specified 2YO and 3YO races (of \$50,000 or less).

These will include selected 2YO and 3YO feature races and 2YO and 3YO handicap races.

A maiden winning a specified race will however only be eligible for its maiden bonus (i.e. The special race bonus will not apply).

BONUS PAYMENTS TABLE

tasBonus Scheme (ex GST)	2YO & 3YO	4YO
Breeder	\$1,000.00	\$ 750.00
Owner	\$3,000.00	\$2,250.00
Total	\$4,000.00	\$3,000.00

Trainer	\$150.00
Jockey	\$ 75.00

DOUBLE UP SALE VOUCHER OPTION

The scheme will also provide a "Double Up Sale Voucher" facility for owners (this does not apply to breeders). This will allow the winning owners of specified races, as designated by Tasracing, the option of converting their \$3,000 cash bonus into a \$6,000 sale credit. This credit must be redeemed at the subsequent Tasmanian Yearling Sale.

Owners will be given 14 days to notify whether they would like their \$3,000 cash bonus converted into a \$6,000 sale credit.

Conditions apply. Please refer to www.tasracing.com.au for more information.

UPCOMING TASBONUS DOUBLE UP SALE VOUCHER RACES				Race Prize Money
APRIL	Sunday 24	TRC	1100m 2YO Autumn SW	\$25,000
			1100m 3YO Autumn SW	\$25,000
MAY	Sunday 8	TRC	1200m 2YO Autumn SW	\$25,000
			1200m 3YO Autumn Hcp	\$25,000
			1400m 2YO Sires Produce	\$30,000
	Sunday 22	TTC	1400m 3YO SW&P	\$30,000

RATING	TAS FEATURE RACES 54.0 min	TAS OPEN 54.0 MIN	VIC 3YO OPEN 54.0 min
109	61.0		
108	60.5		
107	60.0		
106	59.5		
105	59.0		
104	58.5	66.5	
103	58.0	66.0	
102	57.5	65.5	
101	57.0	65.0	
100	56.5	64.5	
99	56.0	64.0	
98	55.5	63.5	
97	55.0	63.0	
96	54.5	62.5	
95	54.0	62.0	
94	53.5	61.5	62.0
93	53.0	61.0	62.0
92	52.5	60.5	61.5
91	52.0	60.0	61.5
90	51.5	59.5	61.0
89		59.0	61.0
88		58.5	60.5
87		58.0	60.5
86		57.5	60.0
85		57.0	60.0
84		56.5	59.5
83		56.0	59.5
82		55.5	59.0
81		55.0	59.0
80		54.5	58.5
79		54.0	58.5
78		53.5	58.0
77		53.0	57.5
76		52.5	57.0
75		52.0	56.5
74		51.5	56.0
73			55.5
72			55.0
71			54.5
70			54.0
69			53.5
68			53.0
67			
66			
65			
64			
63			
62			
61			
60			

RBH template

TASMANIAN RATINGS BASED TEMPLATE

Instructions: Follow the line across from the rating to find the weight a horse would carry in the various race-type columns.

Fillies and Mares: When fillies and mares race against male horses they shall receive a 2.0 kg weight allowance.

3YO's: When 3YO horses race against older horses they shall receive a weight allowance which is a sliding scale that varies from 2.5kg in August to nil by the end of the season. In open races they shall receive a weight allowance at the handicapper's discretion.

Some Victorian race columns have been included to provide a guide to the weights a horse might expect to receive in these events.

Unraced horses rated 59 are eligible to compete in Benchmark 62

TASMANIAN RESTRICTED CLASS (54.0 MIN)						
RATING	CLASS 3	CLASS 1	BM 82	BM 72	BM 62	2YO HCP
84			60.0			
83			59.5			
82			59.0			
81			58.5			
80			58.0			
79	63.0		57.5			
78	62.5		57.0			
77	62.0		56.5			
76	61.5		56.0	61.0		
75	61.0		55.5	60.5		
74	60.5		55.0	60.0		63.0
73	60.0		54.5	59.5		62.5
72	59.5	63.0	54.0	59.0		62.0
71	59.0	62.5	53.5	58.5		61.5
70	58.5	62.0	53.0	58.0		61.0
69	58.0	61.5	52.5	57.5		60.5
68	57.5	61.0	52.0	57.0	62.0	60.0
67	57.0	60.5		56.5	61.5	59.5
66	56.5	60.0		56.0	61.0	59.0
65	56.0	59.5		55.5	60.5	58.5
64	55.5	59.0		55.0	60.0	58.0
63	55.0	58.5		54.5	59.5	57.5
62	54.5	58.0		54.0	59.0	57.0
61	54.0	57.5		53.5	58.5	56.5
60	53.5	57.0		53.0	58.0	56.0
59	53.0	56.5		52.5	57.5	55.5
58	52.5	56.0		52.0	57.0	55.0
57	52.0	55.5			56.5	54.5
56	51.5	55.0			56.0	54.0
55	51.0	54.5			55.5	53.5
54		54.0			55.0	53.0
53		53.5			54.5	52.5
52		53.0			54.0	52.0
51		52.5			53.5	51.5
50		52.0			53.0	51.0
49					52.5	
48					52.0	
47						
46						
45						

set weights scale

LOCAL RULE - 9

WEIGHTS PENALTIES AND ALLOWANCES

9.1 In all handicap events, unless otherwise specified, the minimum handicap weight shall be NO LESS THAN 54 kgs. The Handicapper may, at his discretion, take into account the 2.0 kg filly and mare allowance except where it reduces the minimum weight beyond 54 kgs. (amdt effective 1/1/2015)

9.2 Rescinded

9.3 Set Weight Maiden Scales

(a) 3 Year Old +

	AUG-OCT	NOV-JAN	FEB-APR	MAY-JUL
4+ G/E	58.5	58.5	58.5	58.5
3YO C/G	56	57	58	58.5
4+ M	56.5	56.5	56.5	56.5
3YO F	54	55	56	56.5

(b) 3 Year Old+ C/G/E

	AUG-OCT	NOV-JAN	FEB-APR	MAY-JUL
4+ G/E	58	58	58	58
3YO C/G	55.5	56.5	57.5	58

(c) 3 Year Old+ F/M

	AUG-OCT	NOV-JAN	FEB-APR	MAY-JUL
4+ M	58	58	58	58
3YO F	55.5	56.5	57.5	58

(d) 4 Year Old +

	ALL SEASONS
G/E	58.5
M	56.5

(e) 3 Year Old Maiden

	ALL SEASONS
C/G	57
F	55

(f) 2 Year Old Maiden

	ALL SEASONS
C/G	57
F	55

(g) 3 Year Old C/G

	ALL SEASONS
	57

(h) 3 Year Old F

	ALL SEASONS
	57

(i) 2 Year Old C/G

	ALL SEASONS
	57

(j) 2 Year Old F

	ALL SEASONS
	57

(k) Division of a Maiden by sex after acceptances

	AUG-OCT	NOV-JAN	FEB-APR	MAY-JUL
4+ G/E	58	58	58	58
3YO C/G	55.5	56.5	57.5	58
4+ M	58	58	58	58
3YO F	55.5	56.5	57.5	58

(l) Maiden & Class 1

	AUG-OCT	NOV-JAN	FEB-APR	MAY-JUL
4+ G/E Class 1	59	59	59	59
4+ M Class 1	57	57	57	57
4+ G/E Maiden	57	57	57	57
4+ M Maiden	55	55	55	55

(3yo allowance 1 kg Aug-Dec; 0.5 kg Jan-Apr; nil May-Jul)
(2yo allowance 3 kg Jan-Apr; 2.5 kg May-Jul)
(The minimum handicap weight shall be NO LESS THAN 54kg)

(m) Class 4

	AUG-OCT	NOV-JAN	FEB-APR	MAY-JUL
Class 4	58	58	58	58
Class 3	57	57	57	57
Class 2/1 Mdn	55	55	55	55

(Allowances: Fillies/Mares 2kg ALL YEAR. 3yo 1kg Aug-Jan; Nil Feb-Jul)

(n) 2 Year Old & Up Maiden

		APR	MAY-JUL
4YO+ G/E		58.5	58.5
4YO+ M		56.5	56.5
3YO+ C&G		58	58.5
3YO F		56	56.5
2YO C&G		56	56
2YO F		54	54

9.4 Prior to the declaration of Acceptance the Handicapper may adjust the weight of any horse whose weight as published was incorrect:

- (a) because of a clerical error; or
- (b) because of an error or misunderstanding on the Handicapper's part as to the status, age or sex of the horse.



Department of Primary Industries, Parks, Water and Environment
Office of Racing Integrity

Warning to Owners and Trainers regarding the Use of **NUPROFEN** in Racehorses

Ibuprofen is a non-steroidal anti-inflammatory drug and therefore a prohibited substance according to the Australian Rules of Racing. Ibuprofen is available in numerous human preparations for oral and topical use. Ibuprofen is not present in any registered veterinary product for use in horses, and there is only limited information available on the excretion of ibuprofen following its administration to horses.

There are therefore risks involved in the administration of ibuprofen to horses, including but not limited to oral and topical routes.

Trainers are warned that it is difficult to make any reliable predictions about the clearance of ibuprofen from horses based on the information currently available. This is especially so, if multiple doses or exposures to the drug have occurred. There is also a high risk of contamination in racing stables arising from the use of ibuprofen in other horses in a stable.

It is generally noted that:

- (i) Large doses of ibuprofen may result in more prolonged clearance times than smaller doses.
- (ii) Multiple doses or exposures to ibuprofen may result in more prolonged clearance times than a single dose or exposure.
- (iii) Different pharmaceutical preparations of ibuprofen may have different bioavailabilities of the drug which may result in different clearance times.
- (iv) Environmental contamination with ibuprofen may result in horses being contaminated with the drug and cause a positive detection in urine collected from a horse.
- (v) Topical administration of a gel formulation of ibuprofen may result in a prolonged clearance of the drug, probably because the gel persists on the hair which acts as a slow release reservoir.

Important Notice to Owners and Trainers regarding **FORMALDEHYDE**

Office of Racing Integrity Stewards are aware of the existence of compounded injectable products for horses containing the substance formaldehyde. Apart from being a prohibited substance, formaldehyde is also known to be toxic and potentially carcinogenic when given by injection, raising serious welfare concerns for horses administered formaldehyde by injection. There are no APVMA-registered veterinary products for injection that contain formaldehyde as their principal active ingredient, although a compounding pharmacy was identified as having produced an injectable product containing 10% formaldehyde for

use in horses. There are other unregistered injectable veterinary products such as Bio-Bleeder and Kentucky Green that have been found to contain formaldehyde and other aldehydes.

Effective forthwith, ORI Stewards notify trainers that injectable products containing formaldehyde are totally banned in racing, whether for in- or out-of-competition use, and their presence in a racing stable would constitute an offence under Thoroughbred Racing Rule AR80E.



49	Office of Racing Integrity Notifications
50	Racing Australia Updates

The Office of Racing Integrity therefore warns trainers not to administer ibuprofen to racehorses at any time or allow ibuprofen in racing stables. Further, trainers should enquire whether ibuprofen is being used at any spelling/recuperation facility from which they are receiving a horse.

Trainers are advised that an elective non-race-day test should be obtained from any horse known to have been treated with ibuprofen at any time whilst spelling or pre-training and particularly, prior to racing. Accordingly, trainers should contact the Stewards to arrange such testing.

Furthermore, race day and out-of-competition samples will be tested for the presence of formaldehyde. Serious penalties will apply to the finding of such products in a racing stable, or the detection of formaldehyde in a sample taken from a horse on race day.

Furthermore, trainers are again warned of the dangers of having on their premises and using on their horses any unregistered products, particularly those for injection. Many of these products are not properly labelled, do not list their active ingredients, and may be contaminated with other prohibited substances, including those listed in Thoroughbred Racing Rule AR.177B(2).

Anthony O'Connell
Chairman of Stewards
9th January 2016

Admiral with strapper Shaun Hamer after winning the Listed Thomas Lyons Stakes

AMENDMENTS TO AUSTRALIAN RULES OF RACING 103(2)

Top weight for Group 1 handicap races

Summary:

Racing Australia has decided on a change to the programming and handicapping of Group 1 handicap events, aimed at producing the best available race for connections and racegoers.

The decision mitigates the impact when topweights do not accept to race (due to injury or change in the horse's program) and weights have to be raised.

Racing Australia believes that the raising of weights to only 57kg at acceptance time for Group 1 races rather than 58kg would be more in concert with the lower minimums that separate Group 1 handicaps from other races, and negate marginally excessively high minimum weights if weights are raised at acceptance time.

The current wording of AR.103(2) requires the addition of "(57 kilograms for Group 1 handicap races)" to facilitate this decision.

Amend AR.103(2) as follows:

"(2) Notwithstanding the provisions of subrule (1), if at the declaration of acceptances for a handicap flat race the weight allocated to the highest-weighted acceptor (including any extra weight by way of re-handicap or penalty) is less than 58 kilograms (57 kilograms for Group 1 handicap races), or less than a higher weight determined by a Principal Racing Authority, then allocated weights for the race must be increased until the highest-weighted acceptor is weighted at not less than 58 kilograms (57 kilograms for Group 1 handicap races)."

Date of Effect: 1 March, 2016

AMENDMENTS TO AUSTRALIAN RULES OF RACING AR.87B(2)

Safety Vests

Summary:

Racing Australia requires safety vests be an Approved vest in addition to meeting either the European Standard EN 13158 or the ARB Standard 1.1998.

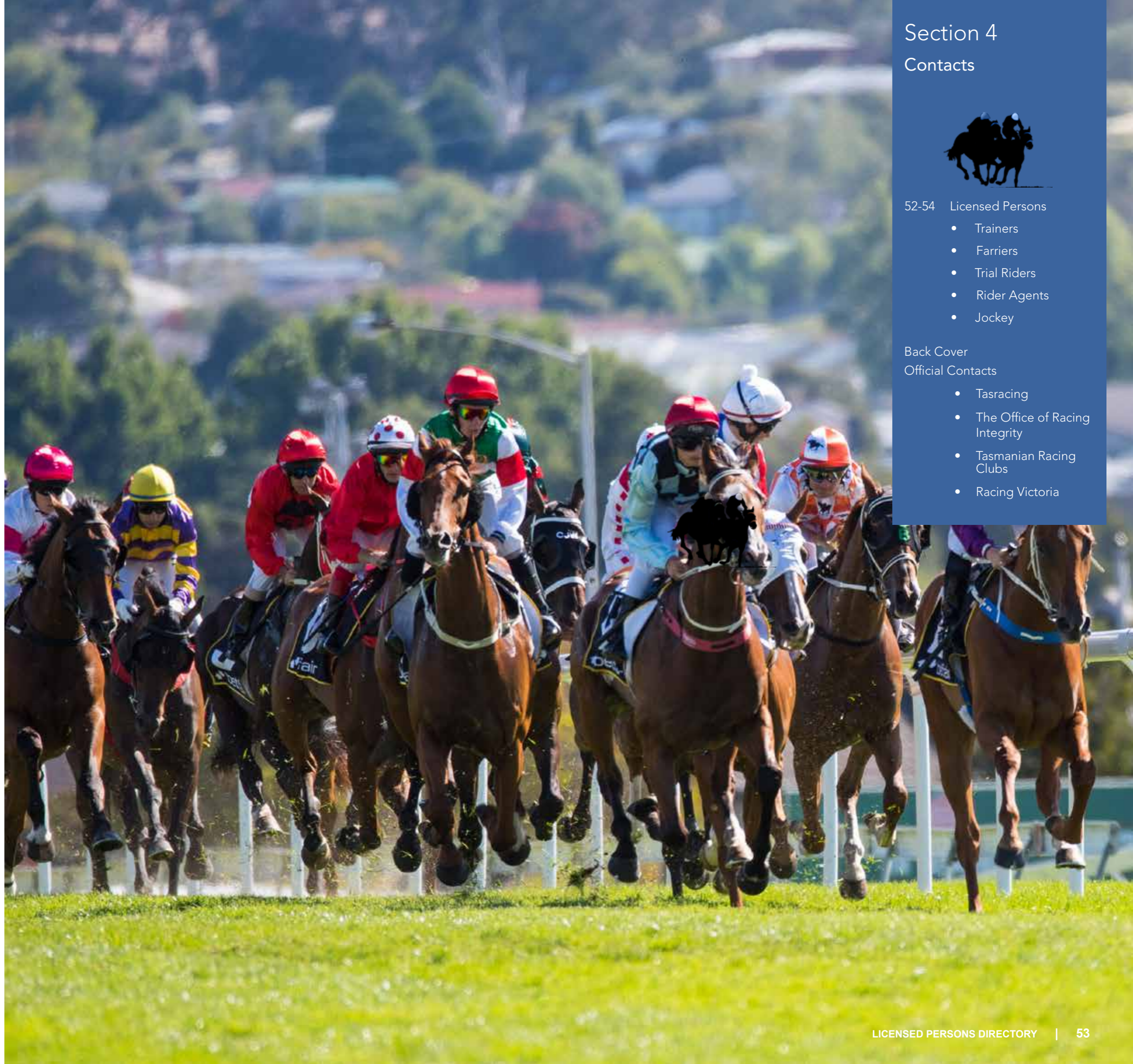
In deciding whether to grant Approved status to a safety vest, Racing Australia will also apply a public interest test.

As a result of satisfying both requirements, the Airowear Swift vest has now been added to the Approved list and can be worn by riders from 1 February, 2016.

Amend AR.87B(2) as follows:

"(2) Notwithstanding compliance with subrule (1), no safety vest may be worn in a race, official trial or jumpout unless it is an Approved safety vest. Such Approved Level 1 safety vests are: Hows Racesafe, Ozvest, Racelite Pro, Vipa, Vipa I, USG Flexi Race and Airowear Swift."

Date of Effect: 1 February, 2016



52-54 Licensed Persons

- Trainers
- Farriers
- Trial Riders
- Rider Agents
- Jockey

Back Cover

Official Contacts

- Tasracing
- The Office of Racing Integrity
- Tasmanian Racing Clubs
- Racing Victoria

TRAINERS A

Surname	Given Names	Phone	Mobile
Blacker	John		0418 144 205
Blacker	Troy	03 6391 1973	0418 144 202
Brunton	David	03 6248 5326	0400 150 375
Brunton	Scott	03 6248 5326	0438 726 889
Campbell	Barry	03 6427 2043	0417 370 991
Carr	Royston	03 6272 3047	0428 723 047
Conron	Craig	03 6427 2813	0419 879 346
Crook	Chris	03 6260 4223	0409 532 961
Curran	Wayne		0414 264 588
Dalco	Larry		0417 598 550
Evans	Terence	03 6268 1569	0417 406 245
Gaffney	Leanne		0407 300 995
Ganderton	Mark		0410 138 540
Goggin	Charlie	03 6243 7590	0418 583 132
Hanson	Ken	03 6391 1537	0488 692 831
Hay	Ian	03 6391 1980	0407 879 767
Keys	John		0438 261 955
Luttrell	John	03 6268 1651	0412 473 824
Luttrell	Peter	03 6391 1193	0459 332 099
Maher	Paul		0402 670 258
McCulloch	Graeme	03 6392 2330	0417 018 895
McShane	Brendan	03 6268 5212	0409 211 155
McShane	Walter	03 6268 5268	0408 280 788
Patterson	Helen		0418 537 332
Roles	Terry	03 6362 3093	0418 130 991
Ryan	Bill	03 6391 2212	0488 912 212
Trinder	Adam		0419 007 594
Trinder	Michael	03 6427 3858	0408 143 705
Wells	Leon	03 6427 2270	0418 144 330
White	Gary	03 6273 0672	0418 136 807

OPEN PERMIT TRAINERS

Surname	Given Names	Phone	Mobile
Baker	Barry	03 6391 1844	0418 911 844
Brakey	Angela		0409 165 461
Brazendale	Douglas		0408 350 210
Burles	Mick		0418 690 953
Burt	Christie		0415 631 884
Chivers	Peter	03 6462 1980	0427 621 323
Clark	Dylan		0400 976 376
Crack	Ron	03 6463 1148	0400 895 133
Dalco	Marion	03 6326 4191	0407 434 054
Davis	Steven		0408 102 528
Doherty	Michael		0409 977 755
Duggan	Adrian	03 6268 1140	0412 212 581
Everett	Mark		0408 384 093
Fulton	Alana		0400 539 989

OPEN PERMIT TRAINERS continued

Surname	Given Names	Phone	Mobile
Galic	Judith	03 6428 4077	0458 169 427
Gandy	Stuart	03 6268 5323	0428 344 800
Goodrick	Barry		0408 133 518
Hall	Rhonda		0419 135 567
Hamer	Danny	03 6427 2963	0408 563 858
Hamer	Rowan		0408 321 003
Hamilton	Kelvin	03 6431 2018	0438 371 342
Hill	John	03 6259 1309	0418 134 436
Hill	Paul	03 6398 1992	0428 377 139
James	Jenny		0417 126 384
Jones	Paul	03 6297 8100	0409 978 137
Kennedy	Kath	03 6381 1252	0418 319 493
Keys	Robert	03 6461 1354	0427 611 354
Keys	Tegan	03 6248 5326	0400 905 900
Lockhart	Stephen		0408 163 981
Luttrell	Nicole		0400 115 735
Mallinson	Paula	03 6462 1392	0488 731 816
McCarthy	Kerrie	03 6394 7520	0438 947 706
McGarvie	Rod	03 6462 1319	0427 631 129
Miller	David A	03 6428 4244	0427 684 441
Mollross	Tammy	03 6268 0160	0411 410 848
Monson	Debbie	03 6462 1200	0429 408 918
Moore	Andrew	03 6426 1423	0427 755 583
Nunn	Aiden	03 6392 2349	0400 641 452
Paul	Harriet	03 6266 0215	0488 166 185
Poke	Vern		0428 140 643
Ray-Luttrell	Dianne	03 6393 6619	0407 342 049
Richards	Julie	03 6248 6157	0419 104 972
Ryan	Monica	03 6391 2212	0407 933 543
Schuuring	Nigel	03 6397 3222	0400 878 857
Seymour	Rodney	03 6249 1295	0419 381 959
Stevenson	Glenn	03 6426 2261	0417 308 786
Taylor	Jim	03 6462 1520	0427 621 520
Wells	Dean	03 6427 2270	0406 373 424
Whelan	Damien		0418 127 448
Worbey	Ray	03 6247 6630	0400 662 381
Young	Paul		0417 110 994

RESTRICTED PLATING

Surname	Given Names	Phone	Mobile
Brazendale	Douglas		0408 350 210
McShane	Walter	03 6268 5268	0408 280 788
Nunn	Aiden	03 6392 2349	0400 641 452
Paul	Harriet	03 6266 0215	0488 166 185
Richards	Keith	03 6248 6157	0407 033 043
Schuuring	Nigel	03 6397 3222	0400 878 857
Sweeney	Melissa		0417 596 475

OWNER TRAINERS

Surname	Given Names	Phone	Mobile
Batt	Edwin		0400 009 471
Berger	Shirley	03 6431 6225	0427 316 225
Bramich	Dale	03 6392 2213	0427 639 222
Cowen	Max	03 6295 1316	0438 951 316
Evans	Mark	03 6496 1888	0414 750 236
Gaffney	Clinton		0400 181 071
Hanson	Tanya	03 6391 2084	0409 310 131
Hobbins	Saige	03 6396 1359	0437 611 042
Keating	David		0457 331 359
Laskey	Leon	03 6331 2304	0407 338 911
Loane	Richele	03 6427 0515	0418 352 321
Meaburn	Luella	03 6265 0641	0419 970 005
Miller	Imogen		0407 750 985
Niass	Barry		0414 293 255
O'Grady	Michael	03 6393 1112	0408 188 496
Pinner	Justin		0419 866 082
Shaw	Stephen	03 6268 1601	0418 504 138
Sullivan	Darryl	03 6496 1741	
Sweeney	Melissa		0417 596 475
Watling	Angela	03 6268 1363	0417 151 419
Wells	Trent		0439 413 634

FARRIERS

Surname	Given Names	Phone	Mobile
Anderson	Ronald		0418 914 772
Backhouse	Paul		0409 979 369
Brooks	Larry	03 6272 2462	0419 525 115
Brown	Wayne	03 6265 2103	
Clark	Dylan		0400 976 376
Gaffney	Charles		0407 300 995
Hamilton	Kelvin	03 6431 2018	0438 371 342
McCulloch	Graeme	03 6392 2330	0417 018 895
Pilgrim	Winston	03 6427 2825	0427 053 585
Pinner	Justin		0419 866 082
Robottom	Craig	03 6268 1423	0438 681 423
Scott	Greg		0401 158 897
Taylor	Jim	03 6462 1520	0427 621 520
Trinder	Michael	03 6427 3858	0408 143 705
Viney	Craig	03 6393 2157	0427 966 174
White	Gary	03 6273 0672	0418 136 807
Wilson	Andrew		0418 399 607

JOCKEYS

Surname	Given Names	Mobile
Amano	Shuji	0417 452 004
Bayliss	Jamie	0403 485 785
Bruce	Casey	0409 237 173
Callow	Noel	0400 274 879
Catania	Georgie	0404 641 175
Challinger	Grant	0411 265 757
Darmanin	Anthony	0417 367 197
Ganderton	Daniel	0401 737 436
Gray	Tennille	0409 820 777
Holland	Dean	0400 692 000
Horner	Darryl	0406 850 338
Lowe	Jason	0407 589 987
Luttrell	Craig	0402 010 166
Luxe	Jacques	0416 941 859
Lyon	Jason	0410 975 761
Mallyon	Jordan	0449 263 882
McCoull	Brendon	0419 597 434
Moore	Kim	0400 261 423
Muhcu	Bulent	0437 257 882
Nishitani	Yassy	0437 115 764
Newitt	Craig	0419 265 079
Pires	David	0428 002 811
Sanderson	Kelvin	0417 116 934
Thornton	Damien	*Refer below
Toker	Ismail	0429 183 236
Yetimova	Rasit	0419 183 190
* Contact Wendy Thornton		0417 196 998

APPRENTICE JOCKEYS

Surname	Given Names	Contact
Barr	Sherry	Ken Hanson
Clark	Raquel	Barry Campbell
Maher	Shiralee	Paul Maher
Mangan	Rhonda	Leon Wells
Maskiell	Kyle	Ken Hanson
McCarthy	Hayley	Kerrie McCarthy
Medhurst	Vanessa	Mark Everett
Mertens	Beau	Mick Kent
Patterson-Doyle	Tayla	Stuart Gandy
Thornton	Boris	Glenn Thornton *
Ulucinar	Mehmet	Clinton & Leanne Gaffney
Wong	Victor	Leon Wells
* Contact Wendy Thornton		0417 196 998

TRIAL RIDERS

Surname	Given Name	Phone	Mobile
Baker	Kylie	03 6391 1844	0439 995 124
Boxall	Kasi		0414 679 187
Burt	Christie		0415 631 884
Guthrie	Michael		0498 048 574
McFerran	Sandra	03 6344 8762	0408 340 045
Quinn	David	03 6330 3045	0408 544 140
Trinder	Adam		0419 007 594
Wells	Trent		0439 413 634
Graham	Chris		0401 174 388

RIDER AGENTS

Surname	Given Name	Phone	Mobile
Conroy	Warren	03 5442 7738	0421 094 903

ARE YOUR DETAILS UP-TO-DATE ??

Information provided in this directory is supplied by the Office of Racing Integrity.

If any information is incorrect or needs to be updated, please advise the Office of Racing Integrity.

While every effort is made to ensure the accuracy of information within this publication, it should be noted that some material is sourced from a number of external organisations and bodies. Tasracing and any contributing third parties shall have no legal liability or responsibility for the content or indirectly in connection with reliance on the use of such information.

For the latest Tasracing information, amendments or alterations please check the Tasracing website at www.tasracing.com.au



tasracing.com.au

The website for SMART PUNTERS, for SMART ADVERTISERS

With over 18,000 customers visiting every week, tasracing.com.au is the perfect way to expose your brand to Tasmanian racing enthusiasts wherever they are.

In 2016 the site will enjoy even more customers as Tasracing rolls out a national digital and social marketing strategy.

Target either wagering customers, racing participants or both, with our tailored advertising packages.

Take advantage of our friendly, helpful customer service designed to help you implement cost effective digital advertising that gets results.

Contact the tasracing.com.au team to discuss how we can help you reach new customers.

Phone: (03) 6212 9328

official contacts

TASRACING

UBET Park Hobart
Elwick Tasmania 7010
Ph: (03) 6212 9333
Fax: (03) 6272 5191
www.tasracing.com.au

Mailing Address
PO Box 730
Glenorchy Tasmania 7010

Code Development Manager
Thoroughbred
Simon Stout
Ph: (03) 6212 9303
Fax: (03) 6272 5191
Mobile: 0408 877 858
Email: s.stout@tasracing.com.au

Racing Manager
David Manshanden
Ph: (03) 6212 9322
Fax: (03) 6272 5191
Mobile: 0409 611 799
Email: d.manshanden@tasracing.com.au

CLUBS

TASMANIAN RACING CLUB
(Metropolitan)
Ph: (03) 6272 9492
Fax: (03) 6272 1429
Email: admin@tasracingclub.com.au
www.tasracingclub.com.au

UBET Park Hobart
Elwick Tasmania 7010
PO Box 45
Glenorchy Tasmania 7010

DEVONPORT RACING CLUB
(Metropolitan)
Ph: (03) 6427 2070
Fax: (03) 6427 2488
Email: devraclb@bigpond.net.au
www.devonportracingclub.com.au

Tapeta Park
Spreyton Tasmania 7310
PO Box 2013
Spreyton Tasmania 7310



OFFICE OF RACING INTEGRITY

Head Office: Launceston
Level 2, Henty House, 1 Civic Sq
Launceston Tasmania 7250
Ph: (03) 6777 1900
Fax: (03) 6336 2484
www.racing.tas.gov.au

Mailing Address
PO Box 1329
Launceston Tasmania 7250

Office Hours: 8.45 am – 5.00pm

Email
Licensing & Registration:
registrar@racingintegrity.tas.gov.au

Stewards:
stewards@racingintegrity.tas.gov.au

RACING VICTORIA

Ph: (03) 9258 4693
Fax: (03) 9736 5281
Email:
group handicap@racingvictoria.net.au
www.racingvictoria.net.au

TASMANIAN TURF CLUB
(Metropolitan)
Ph: (03) 6326 1070
Fax: (03) 6326 5138
Email: admin@turfclubtas.com
www.tasmanianturfclub.com

UBET Racing Centre Launceston
Mowbray Tasmania 7248
PO Box 340
Mowbray Heights Tasmania 7248

KING ISLAND RACING CLUB
(Country)
President
Audrey Hamer
0429 621 575
Track Ph/Fax: (03) 6462 1161
(race days only)
Email: info@kiracing.com.au
www.kiracing.com.au

