

programme notes

BLAYNE HUDSON

The Tasmanian Summer Racing Carnival represents the pinnacle of racing in the state and will once again provide excellent opportunities for participants throughout the feature summer racing period.

The structure of the 2017/2018 calendar layout will once again be altered over the course of the racing carnival due to the fall of the public holidays in the early months of 2018.

Devonport Cup Day will remain on the second week of January with minor changes coming to Hobart and Launceston Cup Days with the meetings moved slightly to coincide with their public holidays.

A slight restructure of the program throughout December to March provides ample opportunities for all horses through Class and Benchmark races during summer.

Throughout this grid Tasracing has introduced a trial of rating based races and a lower rated Benchmark. The grid also sees the introduction of a \$25k F&M 1600m in March as well as the 2600m St Leger, moving from the Autumn program.

Prizemoney increases, which have been in effect since October, have seen an increased tiered stakes system*. Base stakes have risen from \$14,000 to \$16,000, whilst 2YO & 3YO Races have been increased to \$19,000. Prizemoney increases have also introduced 5th place stakes payments.

March sees the introduction of the first Female Jockeys Championship in Launceston on Wednesday 7th. The meeting will showcase some of the best female riders across Australia to coincide with International Women's Day on Thursday 8th March.

Tasmanian Racing Club

- Bow Mistress & Tasmanian Derby will remain as a Friday Twilight meeting on Friday 9th February, leading into the Hobart Cup on Sunday 11th February.
- Tasmanian Guineas will again be run as a Twilight meeting on Friday 12th January.
- An additional meeting has been added to the Calendar in late February to cater to the gap between the public holidays.

Tasmanian Turf Club

- The Magic Millions Race Series Night held will be held on Wednesday 14th February with the Magic Millions Yearling Sales held on Thursday 15th February. The meeting highlights the beginning of the Launceston Carnival.
- New \$25k F&M 1600m race two weeks after the Vamos.
- St Leger moved from its Autumn program to be run two weeks after the Launceston Cup over 2600m.
- National Apprentice Series will be held on Sunday 25th February.
- Female Jockeys Championship on March 7th.

Devonport Race Club

- Three Feature meetings over summer remain as per 16/17: Golden Mile, Sheffield Cup & Devonport Cup.

*STAKES MONEY

Race Type	2016/17	2017/18
2YO & 3YO	\$14,000	\$19,000
MDN	\$14,000	\$16,000
MDN / CL1	\$14,000	\$16,000
CL1	\$14,000	\$16,000
CL2	\$14,000	\$16,000
CL3	\$15,000	\$17,000
CL4	\$16,000	\$17,000
CL5	\$16,000	\$18,000
BM62	\$14,000	\$16,000
BM68	\$14,000	\$16,000
BM72	\$14,000	\$16,000
BM82	\$16,000	\$18,000
OPEN	\$20,000	\$20,000

For additional information on programming please contact Blayne Hudson on (03) 6212 9324



SECTION 1 PROGRAMME INFORMATION



- 40 Programme Notes
- 42-45 Programme & Feature Race Grid - December 2017 to March 2018
- Barrier Trials & Grass Gallop Dates
- 46-61 Programme Detail & Race Conditions
- Double Cup Connections Bonus page 55
- Magic Millions Racing Women's Bonus page 57
- 68-69 King Island Racing

programme grid

LEGEND

- TTC - Tasmanian Turf Club, Launceston
- TRC - Tasmanian Racing Club, Hobart
- DRC - Devonport Racing Club, Devonport

DECEMBER		2YO Maiden	2YO	3YO	3YO Distance	3YO Fillies	3YO&Up Maiden	Maiden/Class 1
6	NIGHT	Wednesday - TTC Luxbet Racing Centre Launceston	1100m	\$50k 3YO Cup 1200m			1400m	2100m
8	TWILIGHT	Friday - DRC Luxbet All Weather Devonport					1000m 1150m	
13	NIGHT	Wednesday - TTC Luxbet Racing Centre Launceston					1200m	1600m
15	TWILIGHT	Friday - TRC Luxbet Park Hobart	1000m				1100m 1400m	
20	NIGHT	Wednesday - TTC Luxbet Racing Centre Launceston		\$25k 3YO Trophy 1400m			1200m 1400m	
26	DAY	Tuesday - DRC Luxbet All Weather Devonport					1000m 1150m	
31	DAY	Sunday - TRC Luxbet Park Hobart	\$25k Alexandra Plate 1000m				1200m 1400m	1600m

JANUARY		2YO Maiden	2YO	3YO	3YO Distance	3YO Fillies	3YO&Up Maiden	Maiden/Class 1
1	DAY	Monday - TTC Longford					1400m	1800m
10	DAY	Wednesday - DRC Luxbet All Weather Devonport					1000m 1350m	1650m
12	TWILIGHT	Friday - TRC Luxbet Park Hobart	1100m	LISTED \$100K Tasmanian Guineas 1600m			1100m	
17	NIGHT	Wednesday - TTC Luxbet Racing Centre, Launceston					1200m 1400m	2100m
24	NIGHT	Wednesday - TTC Luxbet Racing Centre Launceston	\$30k Alfa Bowl 1100m			\$30k Thousand Guineas 1600m	1100m	1600m
28	DAY	Sunday - TRC Luxbet Park Hobart		LISTED \$100K Hobart Guineas 2100m			1200m 1400m	
31	NIGHT	Wednesday - TTC Luxbet Racing Centre Launceston	1200m				1100m C&G 1100m F&M	2100m

Class 1	Class 3	0 - 58	BM58	0 - 62	BM62	BM68	BM72	BM82	F & M	OPEN	OPEN DISTANCE
	1200m				1600m		1200m			LISTED \$100k Conquering WFA 1400m	
	1000m		1350m		1150m		1880m				\$25k Golden Mile 1650m
	1400m F&M		1200m			1100m	1600m				
	1400m C&G										
	1100m				1400m			1200m			
							1400m				
	1200m	1200m			1600m		2100m				LISTED \$100k Tasmanian Stakes 1600m - WFA
				1150m	1350m		1150m				\$25k Sheffield Cup 1650m
	1400m				1200m	1600m		1400m		\$25k Winzenberg Trophy 1100m	

Class 1	Class 3	0 - 58	BM58	0 - 62	BM62	BM68	BM72	BM82	F & M	OPEN	OPEN DISTANCE
					1400m		1400m				Longford Cup 1800m
					1800m						
					1000m		1650m			\$25k Qlty Hcp 1150m	\$100k Devonport Cup 1880m
					1350m						\$30k - Qlty Hcp Brighton Cup 2100m
	1100m				1600m	F&M 1400m	1100m				
	1400m	1200m			1100m			1600m			
										\$50k Luxbet Stakes WFA 1200m	
	1200m				1400m		1200m				
									\$25k Lady Lynette SW&P 1100m		\$50k - WFA Summer Cup 2200m
	1400m						1200m				

barrier trials

All Barrier Trials are subject to weather conditions and track availability.

Trainers will be advised by SMS of any changes and these will also be posted on www.tasracing.com.au.

PLEASE NOTE: Trainers are to lodge barrier trial scratchings with Racing Australia by 7:30am on the day of the barrier trials.

DECEMBER

4	MONDAY	TRC - HOBART Noms close 9am Friday 1 December
12	TUESDAY	TTC - LONGFORD Noms close 9am Monday 11 December
19	TUESDAY	TRC - HOBART Noms close 9am Monday 18 December
28	THURSDAY	DRC - DEVONPORT Noms close 9am Wednesday 27 December

JANUARY

3	WEDNESDAY	TRC - HOBART Noms close 9am Tuesday 2 January
9	TUESDAY	TTC - LONGFORD Noms close 9am Monday 8 January
16	TUESDAY	TRC - HOBART Noms close 9am Monday 15 January
23	TUESDAY	TTC - LONGFORD Noms close 9am Monday 22 January
30	TUESDAY	TRC - HOBART Noms close 9am Monday 29 January

grass gallops

TTC - Launceston
Tuesday and Friday
See Track Manager, Robert Hutchins

TRC - Hobart
Available each non raceday
Tuesday and Friday on request.
Requests must be made prior to 2pm on the preceding day to Tasracing.

FEBRUARY		2YO Maiden	2YO	3YO	3YO Distance	3YO Fillies	3YO&Up Maiden	Maiden/Class 1
9	TWILIGHT Friday - TRC Luxbet Park Hobart			\$30k Carbine Club 1100m	LISTED \$100K Tasmanian Derby 2200m		1100m 1400m	
11	DAY Sunday - TRC Luxbet Park Hobart		LISTED \$100K Elwick Stakes 1100m			LISTED \$100K Strutt Stakes 2100m	1200m 1600m	
14	NIGHT Wednesday - TTC Luxbet Racing Centre Launceston		\$50k Magic Millions 2YO 1200m	\$50k Magic Millions 3YO 1200m			1200m 2100m	
18	DAY Sunday - TRC Luxbet Park Hobart	1000m					1100m	
25	DAY Sunday - TTC Luxbet Racing Centre Launceston				LISTED \$100K Tasmanian Oaks 2100m		1200m 1600m Apprentice Race	
28	DAY Wednesday - TTC Luxbet Racing Centre Launceston		LISTED \$100K Gold Sovereign 1200m	\$30k 3YO Classic 1200m			1400m	

MARCH		2YO Maiden	2YO	3YO	3YO Distance	3YO Fillies	3YO&Up Maiden	Maiden/Class 1
7	NIGHT Wednesday - TTC Luxbet Racing Centre, Launceston						1100m 1200m	1600m
11	DAY Sunday - TRC Luxbet Park Hobart	1100m					1000m 1400m	2100m
14	NIGHT Wednesday - TTC Luxbet Racing Centre Launceston						1200m	
21	NIGHT Wednesday - TTC Luxbet Racing Centre Launceston						1200m 1400m	
25	DAY Sunday - TRC Luxbet Park Hobart						1000m 1200m	1600m
28	NIGHT Wednesday - TTC Luxbet Racing Centre Launceston		1200m				1400m	

Class 1	Class 3	0 - 58	BM58	0 - 62	BM62	BM68	BM72	BM82	F & M	OPEN	OPEN DISTANCE
1200m							1200m	1600m	GROUP 3 \$125K Bow Mistress WFA - 1200m		
	1100m				2100m				LISTED \$100K Thomas Lyons WFA - 1400m	1100m	GROUP 3 \$200K Hobart Cup 2400m
				1200m	1400m						\$25k Sydeston Night Cup 2100m
1100m					1600m		1100m	1600m			
1400m							1400m				
	1200m		1400m Apprentice Series				2100m		GROUP 3 \$125K Vamos Stakes WFA - 1400m		
1200m					2100m	1600m				\$25k 1200m LISTED \$100k Mowbray Stakes WFA 1600m	GROUP 3 \$200K Launceston Cup 2400m

Class 1	Class 3	0 - 58	BM58	0 - 62	BM62	BM68	BM72	BM82	F & M	OPEN	OPEN DISTANCE
1400m			1200m		1600m	1200m	1400m				
1200m	1100m				1400m						
					1200m	1100m	1600m		\$25k 1600m	1200m	\$25k QLTY St Leger 2600m
1200m				1400m	2100m		1200m				
							1400m				
1100m					1000m			1600m			
1400m											
			1200m		1400m	1600m	1200m	2100m		1200m	

barrier trials

All Barrier Trials are subject to weather conditions and track availability. Trainers will be advised by SMS of any changes and these will also be posted on www.tasracing.com.au.
PLEASE NOTE: Trainers are to lodge barrier trial scratchings with Racing Australia by 7:30am on the day of the barrier trials.

FEBRUARY

6	TUESDAY	TTC - LONGFORD	Noms close 9am Monday 5 February
13	TUESDAY	TRC - HOBART	Noms close 9am Monday 12 February
20	TUESDAY	TTC - LONGFORD	Noms close 9am Monday 19 February
27	TUESDAY	TRC - HOBART	Noms close 9am Monday 26 February

MARCH

6	TUESDAY	DRC - DEVONPORT	Noms close 9am Monday 5 March
13	TUESDAY	TRC - HOBART	Noms close 9am Monday 9 March
20	TUESDAY	TTC - LONGFORD	Noms close 9am Monday 19 March
27	TUESDAY	TRC - HOBART	Noms close 9am Monday 26 March

grass gallops

TTC - Launceston
Tuesday and Friday
 See Track Manager, Robert Hutchins

TRC - Hobart
 Available each non raceday
Tuesday and Friday on request.
 Requests must be made prior to 2pm on the preceding day to Tasracing.

December programme detail

N.B. Conditions of Entry: Horses declared to be emergencies and which fail to gain a start, or horses which are eliminated under the balloting conditions are still liable for the nomination fees and only the declaration of acceptance fee will be refunded. Acceptance fees must be paid prior to the horse starting. Provided that notwithstanding the foregoing, Tasracing may in its absolute discretion eliminate any horse or horses from this race and/or exclude any horse or horses from the operation of the preceding elimination conditions. Tasracing reserves the right from time to time to alter the date of running, to make any alteration or modification in this race, to cancel the meeting or any portion thereof, to alter time for taking entries or acceptances, also the right to reject at any time any entry submitted to or for them.

WEDNESDAY 6 DECEMBER 2017

TASMANIAN TURF CLUB
 Luxbet Racing Centre
 Launceston
NIGHT MEETING
FEATURE RACES
 NOMS close 12 noon
 Thursday, 30 November 2017
 HCP declared by 3pm
 Friday, 1 December 2017
 ACC close 9am
 Monday, 4 December 2017
 RIDERS close 12 Noon
 Monday, 4 December 2017

- 2YO Handicap**
 1100m
 Of \$19,000 - \$11,875; \$3,800;
 \$1,900; \$950; \$475
- 3YO & Upwards Maiden**
 1400m - Set Weights
 Of \$16,000 - \$10,000; \$3,200;
 \$1,600; \$800; \$400
- Maiden/Class 1**
 2100m - Set Weights
 Of \$16,000 - \$10,000; \$3,200;
 \$1,600; \$800; \$400
- Class 3 Handicap**
 1200m
 Of \$16,000 - \$10,000; \$3,200;
 \$1,600; \$800; \$400
- Benchmark 62 Handicap**
 1600m
 Of \$16,000 - \$10,000; \$3,200;
 \$1,600; \$800; \$400
- Benchmark 72 Handicap**
 1200m
 Of \$16,000 - \$10,000; \$3,200;
 \$1,600; \$800; \$400
- 3YO CUP**
 Apprentices cannot claim
 1200m - Set Weights &
 Penalties
 Of \$50,000 - \$30,250; \$9,000;
 \$4,500; \$2,250; \$1,000;
 \$1,000; \$1,000; \$1,000
SCRATCHING FEE:
 \$165 (GST incl)
BALLOTING CONDITIONS:
 Refer Local Rule 11.1(g)
PENALTIES:
 The winner of a race of the
 advertised value to the winner of
 \$60,000 or more, 3kg, and of two
 or more such races, 4kg. The
 winner of a race of the advertised

value to the winner of \$30,000 or more, 2kg, and of two or more such races 2.5kg. The winner of a race of the advertised value to the winner of \$15,000 or more, 1kg, and of two or more such races 1.5kg. The winner of two or more races of the advertised value to the winner of \$7,500 or more, 1kg. Penalties not to be cumulative (In applying this rule where reference is made to prize money no account shall be taken of any bonuses won by a horse).

CONQUERING WFA
 Apprentices cannot claim
 1400m - Weight for Age
LISTED
 Of \$100,000 - \$60,000;
 \$18,000; \$9,000; \$4,500;
 \$2,500; \$2,000; \$2,000;
 \$2,000;
NOMINATIONS:
 \$165 (GST incl)
FINAL ACCEPTANCE:
 \$1,100 (GST incl)
SCRATCHING FEE:
 \$550 (GST inclusive)
BALLOTING CONDITIONS:
 Refer Local Rule 11.1(e)

FRIDAY 8 DECEMBER 2017

DEVONPORT RACING CLUB
 Luxbet All Weather,
 Devonport
TWILIGHT MEETING
 NOMS close 12 noon
 Friday, 1 December 2017
 HCP declared by 3pm
 Monday, 4 December 2017
 ACC close 9am
 Tuesday, 5 December 2017
 RIDERS close 12 Noon
 Tuesday, 5 December 2017

- 3YO & Upwards Maiden**
 1000m - Set Weights
 Of \$16,000 - \$10,000;
 \$3,200; \$1,600; \$800; \$400
- 3YO & Upwards Maiden**
 1150m - Set Weights
 Of \$16,000 - \$10,000;
 \$3,200; \$1,600; \$800; \$400
- Class 1 Handicap**
 1000m
 Of \$16,000 - \$10,000;
 \$3,200; \$1,600; \$800; \$400
- Benchmark 58 Handicap**
 1350m
 Of \$16,000 - \$10,000;
 \$3,200; \$1,600; \$800; \$400
- Benchmark 62 Handicap**
 1150m
 Of \$16,000 - \$10,000;
 \$3,200; \$1,600; \$800; \$400
- Benchmark 72 Handicap**
 1880m
 Of \$16,000 - \$10,000;
 \$3,200; \$1,600; \$800; \$400
- Golden Mile**
 Apprentices cannot claim
 1650m - Open Handicap
 Of \$25,000 - \$15,500; \$5,000;
 \$2,500; \$1,250; \$750
SCRATCHING FEE:
 \$165 (GST inclusive)
BALLOTING CONDITIONS:
 Refer Local Rule 11.1(e)
BALLOT EXEMPT RACE:
 The winner of this race to be
 exempt from ballot for the
 2018 Devonport Cup to be
 run on Wednesday 10
 January 2018.

WEDNESDAY 13 DECEMBER 2017

TASMANIAN TURF CLUB
 Luxbet Racing Centre
 Launceston
NIGHT MEETING
 NOMS close 12 noon
 Thursday, 7 December 2017
 HCP declared by 3pm
 Friday, 8 December 2017
 ACC close 9am
 Tuesday, 12 December 2017
 RIDERS close 12 Noon
 Monday, 11 December 2017

- 3YO & Upwards Maiden**
 1200m - Set Weights
 Of \$16,000 - \$10,000; \$3,200;
 \$1,600; \$800; \$400
- Maiden/Class 1**
 1600m - Set Weights
 Of \$16,000 - \$10,000; \$3,200;
 \$1,600; \$800; \$400
- Class 1 Handicap**
 Fillies & Mares
 1400m
 Of \$16,000 - \$10,000; \$3,200;
 \$1,600; \$800; \$400
- Class 1 Handicap**
 Colts & Geldings
 1400m
 Of \$16,000 - \$10,000; \$3,200;
 \$1,600; \$800; \$400
- 0 - 58 Rating**
 1200m
 Of \$16,000 - \$10,000; \$3,200;
 \$1,600; \$800; \$400
- Benchmark 68 Handicap**
 1100m
 Of \$16,000 - \$10,000; \$3,200;
 \$1,600; \$800; \$400
- Benchmark 72 Handicap**
 1600m
 Of \$16,000 - \$10,000; \$3,200;
 \$1,600; \$800; \$400

FRIDAY 15 DECEMBER 2017

TASMANIAN RACING CLUB
 Luxbet Park
 Hobart
TWILIGHT MEETING
 NOMS close 12 noon
 Friday, 8 December 2017
 HCP declared by 3pm
 Monday, 11 December 2017
 ACC close 9am
 Tuesday, 12 December 2017
 RIDERS close 12 Noon
 Tuesday, 12 December 2017

- 2YO Maiden**
 1000m - Set Weights
 Of \$16,000 - \$11,875; \$3,800;
 \$1,900; \$950; \$475
- 3YO & Upwards Maiden**
 1100m - Set Weights
 Of \$16,000 - \$10,000; \$3,200;
 \$1,600; \$800; \$400
- 3YO & Upwards Maiden**
 1400m - Set Weights
 Of \$16,000 - \$10,000; \$3,200;
 \$1,600; \$800; \$400
- Class 1 Handicap**
 1100m
 Of \$16,000 - \$10,000; \$3,200;
 \$1,600; \$800; \$400
- Benchmark 62 Handicap**
 1400m
 Of \$16,000 - \$10,000; \$3,200;
 \$1,600; \$800; \$400
- Benchmark 82 Handicap**
 1200m
 Of \$18,000 - \$11,250; \$3,600;
 \$1,800; \$900; \$450
- Benchmark 82 Handicap**
 1400m
 Of \$18,000 - \$11,250; \$3,600;
 \$1,800; \$900; \$450

WEDNESDAY 20 DECEMBER 2017

TASMANIAN TURF CLUB
 Luxbet Racing Centre
 Launceston
NIGHT MEETING
FEATURE RACES
 NOMS close 12 noon
 Thursday, 14 December 2017
 HCP declared by 3pm
 Friday, 15 December 2017
 ACC close 9am
 Monday, 18 December 2017
 RIDERS close 12 Noon
 Monday, 18 December 2017

- 3YO Trophy**
 Apprentices cannot claim
 1400m - Set Weights
 Of \$25,000 - \$15,500; \$5,000;
 \$2,500; \$1,250; \$750
SCRATCHING FEE:
 \$165 (GST incl)
BALLOTING CONDITIONS:
 Refer Local Rule 11.1(e)
- 3YO & Upwards Maiden**
 1200m - Set Weights
 Of \$16,000 - \$10,000; \$3,200;
 \$1,600; \$800; \$400
- 3YO & Upwards Maiden**
 1400m - Set Weights
 Of \$16,000 - \$10,000; \$3,200;
 \$1,600; \$800; \$400
- Class 1 Handicap**
 1200m
 Of \$16,000 - \$10,000; \$3,200;
 \$1,600; \$800; \$400
- Class 3 Handicap**
 1200m
 Of \$17,000 - \$10,625; \$3,400;
 \$1,700; \$850; \$425
- Benchmark 62 Handicap**
 1600m
 Of \$16,000 - \$10,000; \$3,200;
 \$1,600; \$800; \$400
- Benchmark 72 Handicap**
 2100m
 Of \$16,000 - \$10,000; \$3,200;
 \$1,600; \$800; \$400

TUESDAY 26 DECEMBER 2017

DEVONPORT RACING CLUB
 Luxbet All Weather,
 Devonport
 NOMS close 12 noon
 Monday, 18 December 2017
 HCP declared by 3pm
 Tuesday, 19 December 2017
 ACC close 9am
 Wednesday, 20 December 2017
 RIDERS close 12 noon
 Wednesday, 20 December 2017

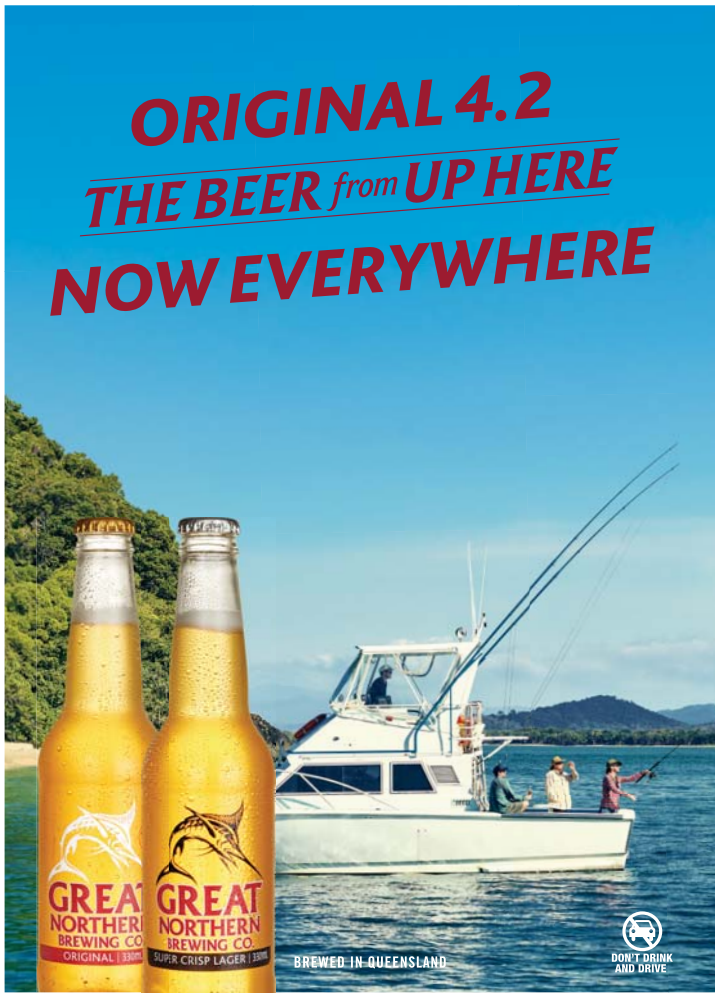
- 3YO & Upwards Maiden**
 1000m - Set Weights
 Of \$16,000 - \$10,000; \$3,200;
 \$1,600; \$800; \$400
- 3YO & Upwards Maiden**
 1150m - Set Weights
 Of \$16,000 - \$10,000; \$3,200;
 \$1,600; \$800; \$400
- 0 - 62 Rating**
 1150m
 Of \$16,000 - \$10,000; \$3,200;
 \$1,600; \$800; \$400
- Benchmark 62 Handicap**
 1350m
 Of \$16,000 - \$10,000; \$3,200;
 \$1,600; \$800; \$400
- Benchmark 62 Handicap**
 1880m - Set Weights
 Of \$16,000 - \$10,000; \$3,200;
 \$1,600; \$800; \$400
- Benchmark 72 Handicap**
 1150m
 Of \$16,000 - \$10,000; \$3,200;
 \$1,600; \$800; \$400
- Sheffield Cup**
 Apprentices cannot claim
 1650m - Open Handicap
 Of \$25,000 - \$15,500; \$5,000;
 \$2,500; \$1,250; \$750
SCRATCHING FEE:
 \$165 (GST inclusive)
BALLOTING CONDITIONS:
 Refer Local Rule 11.1(e)
BALLOT EXEMPT RACE:
 The winner of this race to be
 exempt from ballot for the
 2018 Devonport Cup to be
 run on Wednesday 10
 January 2018

**SUNDAY 31
DECEMBER 2017**

TASMANIAN RACING CLUB
Luxbet Park
Hobart

NOMS close 12 noon
Thursday, 21 December 2017
HCP declared by 3pm
Friday, 22 December 2017
ACC close 9am
Wednesday, 27 December 2016
RIDERS close 12 Noon
Wednesday, 27 December 2016

- Alexandra Plate**
For 2YO. Apprentices cannot claim
1000m - Set Weights
Of \$25,000 - \$15,500; \$5,000;
\$2,500; \$1,250; \$750
SCRATCHING FEE:
\$165 (GST inclusive)
BALLOTING CONDITIONS:
Refer Local Rule 11.1(e)
- 3YO & Upwards Maiden**
1200m - Set Weights
Of \$16,000 - \$10,000; \$3,200;
\$1,600; \$800; \$400
- 3YO & Upwards Maiden**
1400m - Set Weights
Of \$16,000 - \$10,000; \$3,200;
\$1,600; \$800; \$400
- Maiden/Class 1**
1600m - Set Weights
Of \$16,000 - \$10,000; \$3,200;
\$1,600; \$800; \$400
- Class 1 Handicap**
1400m
Of \$16,000 - \$10,000;
\$3,200; \$1,600; \$800; \$400
- Benchmark 62 Handicap**
1200m
Of \$16,000 - \$10,000;
\$3,200; \$1,600; \$800; \$400
- Benchmark 68 Handicap**
1600m
Of \$16,000 - \$10,000;
\$3,200; \$1,600; \$800; \$400
- Benchmark 82 Handicap**
1400m
Of \$16,000 - \$10,000;
\$3,200; \$1,600; \$800; \$400
- Winzenberg Handicap**
Apprentices cannot claim
1100m - Quality Handicap
Of \$25,000 - \$15,500; \$5,000;
\$2,500; \$1,250; \$750
SCRATCHING FEE:
\$165 (GST inclusive)
BALLOTING CONDITIONS:
Refer Local Rule 11.1(e)



N.B. Conditions of Entry: Horses declared to be emergencies and which fail to gain a start, or horses which are eliminated under the balloting conditions are still liable for the nomination fees and only the declaration of acceptance fee will be refunded. Acceptance fees must be paid prior to the horse starting. Provided that notwithstanding the foregoing, Tasracing may in its absolute discretion eliminate any horse or horses from this race and/or exclude any horse or horses from the operation of the preceding elimination conditions. Tasracing reserves the right from time to time to alter the date of running, to make any alteration or modification in this race, to cancel the meeting or any portion thereof, to alter time for taking entries or acceptances, also the right to reject at any time any entry submitted to or for them.

PUT YOURSELF IN THE PICTURE



HOT DIPPED | 2016 Magic Millions 2YO Classic | Tasmanian 2YO of the Year 2016
5 wins from 6 starts this season incl the Tasmanian Ens L & Strutt Stks L

MAGIC MILLIONS 2018 TASMANIAN YEARLING SALE

15 FEBRUARY | INVERESK SHOWGROUNDS, LAUNCESTON

ALL YEARLINGS ELIGIBLE TO BE NOMINATED TO
THE WORLD'S RICHEST SALES-BASED INCENTIVE RACE SERIES!
19 RACES ACROSS 6 STATES AND MORE THAN \$11 MILLION IN PRIZEMONEY NATIONALLY

www.magicmillions.com.au



N.B. Conditions of Entry: Horses declared to be emergencies and which fail to gain a start, or horses which are eliminated under the balloting conditions are still liable for the nomination fees and only the declaration of acceptance fee will be refunded. Acceptance fees must be paid prior to the horse starting. Provided that notwithstanding the foregoing, Tasracing may in its absolute discretion eliminate any horse or horses from this race and/or exclude any horse or horses from the operation of the preceding elimination conditions. Tasracing reserves the right from time to time to alter the date of running, to make any alteration or modification in this race, to cancel the meeting or any portion thereof, to alter time for taking entries or acceptances, also the right to reject at any time any entry submitted to or for them.

**MONDAY 1
JANUARY 2018**

TASMANIAN TURF CLUB
Longford

NOMS close 12 noon
Friday, 22 December 2017
HCP declared by 5pm
Friday, 22 December 2017
ACC close 11am
Wednesday, 27 December 2017
RIDERS close 2pm
Wednesday, 27 December 2017

- 3YO & Upwards Maiden**
1400m - Set Weights
Of \$10,000 - \$6,250; \$2,000;
\$1,000; \$500; \$250
- Maiden/Class 1**
1800m - Set Weights
Of \$10,000 - \$6,250; \$2,000;
\$1,000; \$500; \$250
- Benchmark 62 Handicap**
1400m
Of \$10,000 - \$6,250; \$2,000;
\$1,000; \$500; \$250
- Benchmark 62 Handicap**
1800m
Of \$10,000 - \$6,250; \$2,000;
\$1,000; \$500; \$250
- Benchmark 72 Handicap**
1400m
Of \$10,000 - \$6,250; \$2,000;
\$1,000; \$500; \$250
- Longford Cup**
1800m
Of \$20,000 - \$12,500; \$4,000;
\$2,000; \$1,000; \$500

**WEDNESDAY 10
JANUARY 2018**

DEVONPORT RACING CLUB
Luxbet All Weather,
Devonport

FEATURE RACES
NOMS close 12 noon
Tuesday, 2 January 2018
HCP declared by 3pm
Wednesday, 3 January 2018
ACC close 9am
Thursday, 4 January 2018
RIDERS close 12 noon
Thursday, 4 January 2018

- 3YO & Upwards Maiden**
1000m - Set Weights
Of \$16,000 - \$10,000; \$3,200;
\$1,600; \$800; \$400
- 3YO & Upwards Maiden**
1350m - Set Weights
Of \$16,000 - \$10,000; \$3,200;
\$1,600; \$800; \$400
- Maiden/Class 1**
1650m - Set Weights
Of \$16,000 - \$10,000; \$3,200;
\$1,600; \$800; \$400
- Benchmark 62 Handicap**
1000m
Of \$16,000 - \$10,000; \$3,200;
\$1,600; \$800; \$400
- Benchmark 62 Handicap**
1350m
Of \$16,000 - \$10,000; \$3,200;
\$1,600; \$800; \$400
- Benchmark 72 Handicap**
1650m
Of \$16,000 - \$10,000; \$3,200;
\$1,600; \$800; \$400
- Quality Handicap**
Apprentices cannot claim
1150m - Quality Handicap
Of \$25,000 - \$15,500; \$5,000;
\$2,500; \$1,250; \$750
SCRATCHING FEE:
\$165 (GST incl)
BALLOTING CONDITIONS:
Refer Local Rule 11.1(e)

**FRIDAY 12
JANUARY 2018**

TASMANIAN RACING CLUB
Luxbet Park
Hobart

FEATURE RACES
NOMS close 12 noon
Friday, 5 January 2018
HCP declared by 3pm
Monday, 8 January 2018
ACC close 9am
Tuesday, 9 January 2018
RIDERS close 12 Noon
Tuesday, 9 January 2018

- 2YO Maiden**
1100m - Set Weights
Of \$19,000 - \$11,875; \$3,800;
\$1,900; \$950; \$475
- 3YO & Upwards Maiden**
1100m - Set Weights
Of \$16,000 - \$10,000; \$3,200;
\$1,600; \$800; \$400
- Class 1 Handicap**
1100m
Of \$16,000 - \$10,000; \$3,200;
\$1,600; \$800; \$400
- Benchmark 62 Handicap**
1600m
Of \$16,000 - \$10,000; \$3,200;
\$1,600; \$800; \$400
- Benchmark 68 Handicap**
Fillies & Mares
1400m
Of \$17,000 - \$10,625; \$3,400;
\$1,700; \$850; \$425
- Benchmark 72 Handicap**
1100m
Of \$17,000 - \$10,625; \$3,400;
\$1,700; \$850; \$425
- TASMANIAN GUINEAS
For 3YO**
Apprentices cannot claim
1600m - Set Weights -
LISTED
Of \$100,000 - \$60,000;
\$18,000; \$9,000; \$4,500;
\$2,500; \$2,000; \$2,000;
\$2,000
NOMINATIONS:
\$165 (GST incl)
FINAL ACCEPTANCE:
\$1,100 (GST incl)
SCRATCHING FEE:
\$550 (GST incl)
BALLOTING CONDITIONS:
Refer Local Rule 11.1(e)

**WEDNESDAY 17
JANUARY 2018**

TASMANIAN TURF CLUB
Luxbet Racing Centre
Launceston

NIGHT MEETING
NOMS close 12 noon
Thursday, 11 January 2018
HCP declared by 3pm
Friday, 12 January 2018
ACC close 9am
Monday, 15 January 2018
RIDERS close 12 Noon
Monday, 15 January 2018

- 3YO & Upwards Maiden**
1200m - Set Weights
Of \$16,000 - \$10,000; \$3,200;
\$1,600; \$800; \$400
- 3YO & Upwards Maiden**
1400m - Set Weights
Of \$16,000 - \$10,000; \$3,200;
\$1,600; \$800; \$400
- Maiden/Class 1**
2100m - Set Weights
Of \$16,000 - \$10,000; \$3,200;
\$1,600; \$800; \$400
- Class 1 Handicap**
1400m
Of \$16,000 - \$10,000; \$3,200;
\$1,600; \$800; \$400
- Class 3 Handicap**
1200m
Of \$17,000 - \$10,625; \$3,400;
\$1,700; \$850; \$425
- Benchmark 62 Handicap**
1100m
Of \$16,000 - \$10,000; \$3,200;
\$1,600; \$800; \$400
- Benchmark 82 Handicap**
1600m
Of \$18,000 - \$11,250; \$3,600;
\$1,800; \$900; \$450

**WEDNESDAY 24
JANUARY 2018**

TASMANIAN TURF CLUB
Luxbet Racing Centre
Launceston

NIGHT MEETING
FEATURE RACES
NOMS close 12 noon
Thursday, 18 January 2018
HCP declared by 3pm
Friday, 19 January 2018
ACC close 9am
Monday, 22 January 2018
RIDERS close 12 Noon
Monday, 22 January 2018

- ALFA BOWL
For 2YO.**
Apprentices cannot claim
1100m - Set Weights
Of \$30,000 - \$18,150; \$5,400;
\$2,700; \$1,350;
\$600; \$600; \$600; \$600
SCRATCHING FEE:
\$165 (GST inclusive)
BALLOTING CONDITIONS:
Refer Local Rule 11.1(e)
- THOUSAND GUINEAS
For 3YO Fillies.**
Apprentices cannot claim
1600m - Set Weights
Of \$30,000 - \$18,150; \$5,400;
\$2,700; \$1,350; \$600; \$600;
\$600; \$600
SCRATCHING FEE:
\$165 (GST inclusive)
BALLOTING CONDITIONS:
Refer Local Rule 11.1(e)
- 3YO & Upwards Maiden**
1100m - Set Weights
Of \$16,000 - \$10,000; \$3,200;
\$1,600; \$800; \$400
- Maiden/Class 1**
1600m - Set Weights
Of \$16,000 - \$10,000; \$3,200;
\$1,600; \$800; \$400
- Class 1 Handicap**
1200m - Of \$16,000 - \$10,000;
\$3,200; \$1,600; \$800; \$400
- 0 - 62 Rating**
1400m - Of \$16,000 - \$10,000;
\$3,200; \$1,600; \$800; \$400
- Benchmark 72 Handicap**
1200m - Of \$16,000 - \$10,000;
\$3,200; \$1,600; \$800; \$400

N.B. Conditions of Entry: Horses declared to be emergencies and which fail to gain a start, or horses which are eliminated under the balloting conditions are still liable for the nomination fees and only the declaration of acceptance fee will be refunded. Acceptance fees must be paid prior to the horse starting. Provided that notwithstanding the foregoing, Tasracing may in its absolute discretion eliminate any horse or horses from this race and/or exclude any horse or horses from the operation of the preceding elimination conditions. Tasracing reserves the right from time to time to alter the date of running, to make any alteration or modification in this race, to cancel the meeting or any portion thereof, to alter time for taking entries or acceptances, also the right to reject at any time any entry submitted to or for them.

**SUNDAY 28
JANUARY 2018**

TASMANIAN RACING CLUB
Luxbet Park
Hobart

FEATURE RACES

NOMS close 12 noon
Monday, 22 January 2018
HCP declared by 3pm
Tuesday, 23 January 2018
ACC close 9am
Wednesday, 24 January 2018
RIDERS close 12 Noon
Wednesday, 24 January 2018

- 3YO & Upwards Maiden**
1200m - Set Weights
Of \$16,000 - \$10,000; \$3,200; \$1,600; \$800; \$400
- 3YO & Upwards Maiden**
1400m - Set Weights
Of \$16,000 - \$10,000; \$3,200; \$1,600; \$800; \$400
- Class 3 Handicap**
1100m - Of \$17,000 - \$10,625; \$3,400; \$1,700; \$850; \$425
- Benchmark 72 Handicap**
1400m - Of \$16,000 - \$10,000; \$3,200; \$1,600; \$800; \$400
- HOBART GUINEAS**
For 3YO
Apprentices cannot claim 2100m - Set Weights - LISTED
Of \$100,000 - \$60,000; \$18,000; \$9,000; \$4,500; \$2,500; \$2,000; \$2,000; \$2,000
NOMINATIONS: \$165 (GST inclusive)
FINAL ACCEPTANCE: \$1,100 (GST incl)
SCRATCHING FEE: \$550 (GST inclusive)
BALLOTING CONDITIONS: Refer Local Rule 11.1(e)
BALLOT EXEMPT RACE: The winner of this race to be exempt from ballot for the 2018 Schweppes Tasmanian Derby to be run on Friday 9 February 2018

- LADY LYNETTE**
Fillies & Mares - SW&P
Apprentices cannot claim 1100m
Of \$25,000 - \$15,500; \$5,000; \$2,500; \$1,250; \$750
SCRATCHING FEE: \$165 (GST inclusive)
BALLOTING CONDITIONS: Refer Local Rule 11.1(e)
PENALTIES: The winner of a race of the Advertised value to the winner of \$60,000 or more, 3kg, and of two or more such races, 4kg. The winner of a race of the advertised value to the winner of \$30,000 or more, 2kg, and of two or more such races 2.5kg. The winner of a race of the advertised value to the winner of \$15,000 or more, 1kg, and of two or more such races 1.5kg. The winner of two or more races of the advertised value to the winner of \$7,500 or more, 1kg. Penalties not to be cumulative (In applying this rule where reference is made to prize money no account shall be taken of any bonuses won by a horse).

- SUMMER CUP**
Apprentices cannot claim 2200m - Weight For Age
Of \$50,000 - \$30,250; \$9,000; \$4,500; \$2,250; \$1,000; \$1,000; \$2,000; \$1,000
SCRATCHING FEE: \$165 (GST inclusive)
BALLOTING CONDITIONS: Refer Local Rule 11.1(e)
BALLOT EXEMPT RACE: The winner of this race to be exempt from ballot for the Luxbet Hobart Cup to be run on Sunday 11 February 2018

**WEDNESDAY 31
JANUARY 2018**

TASMANIAN TURF CLUB
Luxbet Racing Centre
Launceston

NIGHT MEETING

NOMS close 12 noon
Thursday, 25 January 2018
HCP declared by 3pm
Friday, 26 January 2018
ACC close 9am
Monday, 29 January 2018
RIDERS close 12 Noon
Monday, 29 January 2018

- 2YO Maiden**
1200m - Set Weights
Of \$19,000 - \$11,875; \$3,800; \$1,900; \$950; \$475
- 3YO & Upwards Maiden**
1100m - Set Weights
Fillies & Mares
Of \$16,000 - \$10,000; \$3,200; \$1,600; \$800; \$400
- 3YO & Upwards Maiden**
1100m - Set Weights
Colts & Geldings
Of \$16,000 - \$10,000; \$3,200; \$1,600; \$800; \$400
- Maiden/Class 1**
2100m - Set Weights
Of \$16,000 - \$10,000; \$3,200; \$1,600; \$800; \$400
- Class 1 Handicap**
1400m
Of \$16,000 - \$10,000; \$3,200; \$1,600; \$800; \$400
- Benchmark 62 Handicap**
1200m
Of \$16,000 - \$10,000; \$3,200; \$1,600; \$800; \$400
- Benchmark 62 Handicap**
1600m
Of \$16,000 - \$10,000; \$3,200; \$1,600; \$800; \$400

THE No.1 SOURCE OF AUSTRALIAN
GROUP ONE WINS
IN 2016-17



WINX
WORLD'S BEST ON TURF

EMIRATES STKS | MEMSIE STKS | UNDERWOOD STKS | CF ORR STKS | FUTURITY STKS | JJ ATKINS STKS
QUEEN OF THE TURF STKS | FLIGHT STKS | THOUSAND GUINEAS | SIRE'S PRODUCE STKS | VRC OAKS
MAKYBE DIVA STKS | DOOMBEN 10,000 STKS | ROBERT SANGSTER CLASSIC | WILLIAM REID STKS
KINGSTON TOWN CLASSIC | CHAMPAGNE STKS | GEORGE MAIN STKS | CAULFIELD STKS | WS COX PLATE
CHIPPING NORTON STKS | GEORGE RYDER STKS | QUEEN ELIZABETH STKS

2018 YEARLING SALES

GOLD COAST 10-16 JANUARY | TASMANIA 15 FEBRUARY | PERTH 19-20 FEBRUARY | ADELAIDE 13-14 MARCH
GOLD COAST MARCH 19-20 MARCH | NATIONAL 5-7 JUNE

www.magicmillions.com.au



N.B. Conditions of Entry: Horses declared to be emergencies and which fail to gain a start, or horses which are eliminated under the balloting conditions are still liable for the nomination fees and only the declaration of acceptance fee will be refunded. Acceptance fees must be paid prior to the horse starting. Provided that notwithstanding the foregoing, Tasracing may in its absolute discretion eliminate any horse or horses from this race and/or exclude any horse or horses from the operation of the preceding elimination conditions. Tasracing reserves the right from time to time to alter the date of running, to make any alteration or modification in this race, to cancel the meeting or any portion thereof, to alter time for taking entries or acceptances, also the right to reject at any time any entry submitted to or for them.

**FRIDAY 9
FEBRUARY 2018**

TASMANIAN RACING CLUB
Luxbet Park
Hobart

FEATURE RACES

NOMS close 12 noon
Friday, 2 February 2018
HCP declared by 3pm
Monday, 5 February 2018
ACC close 9am
Tuesday, 6 February 2018
RIDERS close 12 noon
Tuesday, 6 February 2018

- CARBINE CLUB**
For 3YO.
Apprentices cannot claim 1100m - Set Weights - LISTED
Of \$100,000 - \$60,000; \$18,000; \$9,000; \$4,500; \$2,500; \$2,000; \$2,000; \$2,000
NOMINATIONS: \$165 (GST inclusive)
FINAL ACCEPTANCE: \$1,100 (GST inclusive)
SCRATCHING FEE: \$550 (GST inclusive)
BALLOTING CONDITIONS: Refer Local Rule 11.1(e)
BALLOT EXEMPT RACE: The winner of this race to be exempt from ballot for the 2018 Luxbet Hobart Cup to be run on Sunday 11 February 2018
- TASMANIAN DERBY**
For 3YO.
Apprentices cannot claim 2200m - Set Weights - LISTED
Of \$100,000 - \$60,000; \$18,000; \$9,000; \$4,500; \$2,500; \$2,000; \$2,000; \$2,000
NOMINATIONS: \$165 (GST inclusive)
FINAL ACCEPTANCE: \$1,100 (GST inclusive)
SCRATCHING FEE: \$550 (GST inclusive)
BALLOTING CONDITIONS: Refer Local Rule 11.1(e)
BALLOT EXEMPT RACE: The winner of this race to be exempt from ballot for the 2018 Luxbet Hobart Cup to be run on Sunday 11 February 2018
- 3YO & Upwards Maiden**
1100m - Set Weights
Of \$16,000 - \$10,000; \$3,200; \$1,600; \$800; \$400
- 3YO & Upwards Maiden**
1400m - Set Weights
Of \$16,000 - \$10,000; \$3,200; \$1,600; \$800; \$400

- Class 1 Handicap**
1200m
Of \$16,000 - \$10,000; \$3,200; \$1,600; \$800; \$400
- Benchmark 72 Handicap**
1200m
Of \$16,000 - \$10,000; \$3,200; \$1,600; \$800; \$400
- Benchmark 82 Handicap**
1600m
Of \$16,000 - \$10,000; \$3,200; \$1,600; \$800; \$400
- BOW MISTRESS TROPHY**
For Fillies & Mares.
Apprentices cannot claim 1200m - Weight for Age - GROUP 3
Of \$125,000 - \$75,000; \$22,500; \$11,250; \$5,625; \$3,125; \$2,500; \$2,500; \$2,500
NOMINATIONS: \$165 (GST incl)
FINAL ACCEPTANCE: \$1,375 (GST incl)
SCRATCHING FEE: \$687.50 (GST incl)
BALLOTING CONDITIONS: Refer Local Rule 11.1(e)

**SUNDAY 11
FEBRUARY 2018**

TASMANIAN RACING CLUB
Luxbet Park
Hobart

FEATURE RACES

NOMS close 12 noon
Monday, 5 February 2018
HCP declared by 3pm
Tuesday, 6 February 2018
ACC close 9am
Wednesday, 7 February 2018
RIDERS close 12 noon
Wednesday, 7 February 2018

- ELWICK STAKES**
For 2YO.
Apprentices cannot claim 1100m - Set Weights - LISTED
Of \$100,000 - \$60,000; \$18,000; \$9,000; \$4,500; \$2,500; \$2,000; \$2,000; \$2,000
NOMINATIONS: \$165 (GST inclusive)
FINAL ACCEPTANCE: \$1,100 (GST inclusive)
SCRATCHING FEE: \$550 (GST inclusive)
BALLOTING CONDITIONS: Refer Local Rule 11.1(e)
- STRUTT STAKES**
For 3YO Fillies.
Apprentices cannot claim 1100m - Set Weights - LISTED
Of \$100,000 - \$60,000; \$18,000; \$9,000; \$4,500; \$2,500; \$2,000; \$2,000; \$2,000
NOMINATIONS: \$165 (GST inclusive)
FINAL ACCEPTANCE: \$1,100 (GST inclusive)
SCRATCHING FEE: \$550 (GST inclusive)
BALLOTING CONDITIONS: Refer Local Rule 11.1(e)
- 3YO & Upwards Maiden**
1200m - Set Weights
Of \$16,000 - \$10,000; \$3,200; \$1,600; \$800; \$400
- Maiden/Class 1**
1600m - Set Weights
Of \$16,000 - \$10,000; \$3,200; \$1,600; \$800; \$400
- Class 3 Handicap**
1100m
Of \$17,000 - \$10,625; \$3,400; \$1,700; \$850; \$425

- Benchmark 62 Handicap**
2100m
Of \$16,000 - \$10,000; \$3,200; \$1,600; \$800; \$400
- Open Handicap**
1100m
Of \$20,000 - \$12,500; \$4,000; \$2,000; \$1,000; \$500
- THOMAS LYONS STAKES**
Apprentices cannot claim 1400m - Weight for Age - LISTED
Of \$100,000 - \$60,000; \$18,000; \$9,000; \$4,500; \$2,500; \$2,000; \$2,000; \$2,000
NOMINATIONS: \$165 (GST inclusive)
FINAL ACCEPTANCE: \$1,100 (GST inclusive)
SCRATCHING FEE: \$550 (GST inclusive)
BALLOTING CONDITIONS: Refer Local Rule 11.1(e)
- BETFAIR HOBART CUP**
Apprentices cannot claim 2400m - Open Handicap - GROUP 3
Of \$200,000 - \$120,000; \$36,000; \$18,000; \$9,000; \$5,000; \$4,000; \$4,000; \$4,000
LEG 1 OF \$100K
TASRACING CUP DOUBLE
NOMINATIONS: \$440 (GST inclusive)
FINAL ACCEPTANCE: \$2,200 (GST incl)
SCRATCHING FEE: \$1,100 (GST incl)
BALLOTING CONDITIONS: Refer Local Rule 11.1(e)
BALLOT EXEMPTIONS: The winners of the 2018 Brighton Cup and 2018 Summer Cup will be exempt from ballot for the 2018 Luxbet Hobart Cup.

Tasracing's

\$100,000
DOUBLE CUP CONNECTIONS BONUS

**WIN THE
2018 LUXBET HOBART & LAUNCESTON CUPS
WITH THE SAME HORSE AND TAKE HOME A
BONUS \$100,000 ON TOP OF PRIZEMONEY!**

Take out the Tassie Cups double in 2018 and you'll experience a better way to win. On top of your race winnings, we will give the trainer of the horse \$50K* and the owners \$50K* as well.



tasracing

*Winning horse must be trained and owned by the same connections for both races. Includes GST.

N.B. Conditions of Entry: Horses declared to be emergencies and which fail to gain a start, or horses which are eliminated under the balloting conditions are still liable for the nomination fees and only the declaration of acceptance fee will be refunded. Acceptance fees must be paid prior to the horse starting. Provided that notwithstanding the foregoing, Tasracing may in its absolute discretion eliminate any horse or horses from this race and/or exclude any horse or horses from the operation of the preceding elimination conditions. Tasracing reserves the right from time to time to alter the date of running, to make any alteration or modification in this race, to cancel the meeting or any portion thereof, to alter time for taking entries or acceptances, also the right to reject at any time any entry submitted to or for them.

WEDNESDAY 14 FEBRUARY 2018
TASMANIAN TURF CLUB
 Luxbet Racing Centre
 Launceston
NIGHT MEETING
 NOMS close 12 noon
 Thursday, 8 February 2018
 HCP declared by 3pm
 Friday, 9 February 2018
 ACC close 9am
 Monday, 12 February 2018
 RIDERS close 12 Noon
 Monday, 12 February 2018

1 \$ MAGIC MILLIONS 2YO CLASSIC
 Apprentices cannot claim 1200m - Set Weights Of \$50,000
PRIZEMONEY
 Of \$50,000; Prize money in accordance with Magic Millions Guidelines, see table provided.
 * For graduates of the 2016 Tasmanian Magic Millions Yearling Sale which were nominated to the Race Series at time of sale.

2 \$ MAGIC MILLIONS 3YO CLASSIC
 Apprentices cannot claim 1200m - Handicap Of \$50,000
PRIZEMONEY
 Of \$50,000; Prize money in accordance with Magic Millions Guidelines, see table provided.
 * For graduates of the 2015 Tasmanian Magic Millions Yearling Sale which were nominated to the Race Series at time of sale.

3 3YO & Upwards Maiden
 1200m - Set Weights Of \$16,000 - \$10,000; \$3,200; \$1,600; \$800; \$400
4 Maiden/Class 1
 2100m - Set Weights Of \$16,000 - \$10,000; \$3,200; \$1,600; \$800; \$400
5 Benchmark 58 Handicap
 1200m Of \$16,000 - \$10,000; \$3,200; \$1,600; \$800; \$400
6 Benchmark 62 Handicap
 1400m Of \$16,000 - \$10,000; \$3,200; \$1,600; \$800; \$400
7 Sydeston Night Cup
 Apprentices cannot claim 2100m - Open Handicap Of \$25,000 - \$15,500; \$5,000; \$2,500; \$1,250; \$750
SCRATCHING FEE:
 \$165 (GST inclusive)
BALLOTING CONDITIONS:
 Refer Local Rule 11.1(e)
BALLOT EXEMPT RACE:
 The winner of this race to be exempt from ballot for the 2018 Luxbet Launceston Cup to be run on Wednesday 28 February 2018.

CONDITIONS:
 Magic Millions Promotions Pty Ltd reserves the right to reject any nomination or extend the time to lodge such nominations for the Magic Millions Race Series and to change the venue and date of any race in the Magic Millions Race Series in its absolute discretion. Tasracing may in its absolute discretion eliminate any horse or horses from this race and/or exclude any horse or horses from the operation of the preceding elimination conditions. Tasracing reserves the right from time to time to alter the date of running, to make any alteration or modification in this race, to cancel the meeting or any portion thereof, to alter time for taking entries or acceptances, also the right to reject at any time any entry submitted to or for them.
 If the Race Series nomination was not paid or for yearlings offered at interstate Magic Millions sales, a late race series entry fee of \$1,100 (inc GST) will apply.
LATE RACE SERIES NOMINATION FEE: \$1,100 (GST inclusive). Must be paid by noon Thursday 8 February 2018 to Tasracing Refer * above.
SCRATCHING FEE: \$165 (GST inclusive)
 Scratching Fee applicable unless a Veterinary Certificate is tendered.
BALLOTING CONDITIONS:
 Refer Local Rule 11.1(e)

STAKES FOR PLACINGS IN MAGIC MILLIONS SALE RACES

Starters	1st	2nd	3rd	4th	5th	6th	7th	8th	9th	10th	11th	12th	13th	14th	15th
15	28,500	7,500	3,750	1,250	818	818	818	818	818	818	818	818	818	818	818
14	28,500	7,500	3,750	1,250	900	900	900	900	900	900	900	900	900	900	900
13	28,500	7,500	3,750	1,250	1,000	1,000	1,000	1,000	1,000	1,000	1,000	1,000	1,000	1,000	1,000
12	29,195	7,683	3,841	1,280	1,000	1,000	1,000	1,000	1,000	1,000	1,000	1,000	1,000	1,000	1,000
11	29,890	7,866	3,933	1,311	1,000	1,000	1,000	1,000	1,000	1,000	1,000	1,000	1,000	1,000	1,000
10	30,585	8,049	4,024	1,341	1,000	1,000	1,000	1,000	1,000	1,000	1,000	1,000	1,000	1,000	1,000
9	31,280	8,232	4,116	1,372	1,000	1,000	1,000	1,000	1,000	1,000	1,000	1,000	1,000	1,000	1,000
8	31,976	8,415	4,207	1,402	1,000	1,000	1,000	1,000	1,000	1,000	1,000	1,000	1,000	1,000	1,000
7	32,671	8,598	4,299	1,433	1,000	1,000	1,000	1,000	1,000	1,000	1,000	1,000	1,000	1,000	1,000
6	33,366	8,780	4,390	1,463	1,000	1,000	1,000	1,000	1,000	1,000	1,000	1,000	1,000	1,000	1,000
5	34,061	8,963	4,482	1,494	1,000	1,000	1,000	1,000	1,000	1,000	1,000	1,000	1,000	1,000	1,000

MAGIC MILLIONS | TASRACING
RACING WOMEN'S BONUS



\$10K* BONUS TO THE FIRST ALL-FEMALE OWNED OR LEASED HORSE IN FINISHING ORDER IN THE 2018 MAGIC MILLIONS 2YO CLASSIC

CONDITIONS

To be eligible for the MM/Tasracing Racing Women's Bonus in 2018 the two-year-old horse must be:

- An eligible graduate of a 2017 Magic Millions Yearling Sale and nominated to the Magic Millions Race Series (Full Series or Tasmanian Series);
- 100% owned or leased by females; and
- The horse must race in 100% female ownership (or lease) at all times prior to and including the Magic Millions 2YO Classic on Wednesday 14 February 2018. The ownership (or lease) must remain unchanged from the two-year-old's first official race start until the time the Bonus is awarded.
- The horse must officially finish the race to be eligible to receive the Bonus. In the event of a dead heat between more than one eligible horse, the Bonus will be divided equally.

Should an eligible horse be subject to pre or post-race drug testing by the Stewards, the Bonus will not be distributed until the result of the swab/s have cleared in accordance with the Australian Rules of Racing.

NB: Should there be no Bonus eligible horses contest the Magic Millions 2YO Classic at Launceston on 14 February 2018, the Bonus will not be distributed.



N.B. Conditions of Entry: Horses declared to be emergencies and which fail to gain a start, or horses which are eliminated under the balloting conditions are still liable for the nomination fees and only the declaration of acceptance fee will be refunded. Acceptance fees must be paid prior to the horse starting. Provided that notwithstanding the foregoing, Tasracing may in its absolute discretion eliminate any horse or horses from this race and/or exclude any horse or horses from the operation of the preceding elimination conditions. Tasracing reserves the right from time to time to alter the date of running, to make any alteration or modification in this race, to cancel the meeting or any portion thereof, to alter time for taking entries or acceptances, also the right to reject at any time any entry submitted to or for them.

SUNDAY 18 FEBRUARY 2018
TASMANIAN RACING CLUB
 Luxbet Park
 Hobart
 NOMS close 12 noon
 Monday, 12 February 2018
 HCP declared by 5pm
 Tuesday, 13 February 2018
 ACC close 9am
 Wednesday, 14 February 2018
 RIDERS close 12 noon
 Wednesday, 14 February 2018

SUNDAY 25 FEBRUARY 2018
TASMANIAN TURF CLUB
 Luxbet Racing Centre
 Launceston
\$ FEATURE RACES
 NOMS close 12 noon
 Monday, 19 February 2018
 HCP declared by 3pm
 Tuesday, 20 February 2018
 ACC close 9am
 Wednesday, 21 February 2018
 RIDERS close 12 noon
 Wednesday, 21 February 2018

1 2YO Maiden
 1000m - Set Weights Of \$19,000 - \$11,875; \$3,800; \$1,900; \$950; \$475
2 3YO & Upwards Maiden
 1100m - Set Weights Of \$16,000 - \$10,000; \$3,200; \$1,600; \$800; \$400
3 Class 1 Handicap
 1100m Of \$16,000 - \$10,000; \$3,200; \$1,600; \$800; \$400
4 Class 1 Handicap
 1400m Of \$16,000 - \$10,000; \$3,200; \$1,600; \$800; \$400
5 Benchmark 62 Handicap
 1600m Of \$16,000 - \$10,000; \$3,200; \$1,600; \$800; \$400
6 Benchmark 72 Handicap
 1100m Of \$16,000 - \$10,000; \$3,200; \$1,600; \$800; \$400
7 Benchmark 72 Handicap
 1400m Of \$16,000 - \$10,000; \$3,200; \$1,600; \$800; \$400
8 Benchmark 82 Handicap
 1600m Of \$18,000 - \$11,250; \$3,600; \$1,800; \$900; \$450

1 \$ TASMANIAN OAKS
 For 3YO Fillies.
 Apprentices cannot claim 2100m - Set Weights - LISTED
 Of \$100,000 - \$60,000; \$18,000; \$9,000; \$4,500; \$2,500; \$2,000; \$2,000; \$2,000
NOMINATIONS:
 \$165 (GST inclusive)
FINAL ACCEPTANCE:
 \$1,100 (GST inclusive)
SCRATCHING FEE:
 \$550 (GST inclusive)
BALLOTING CONDITIONS:
 Refer Local Rule 11.1(e)
2 3YO & Upwards Maiden
 1200m - Set Weights Of \$16,000 - \$10,000; \$3,200; \$1,600; \$800; \$400
3 Maiden/Class 1
APPRENTICE RIDERS ONLY. Apprentices must be nominated by the trainer.
 1600m - Set Weights Of \$16,000 - \$10,000; \$3,200; \$1,600; \$800; \$400
4 Class 3 Handicap
 1200m Of \$17,000 - \$10,625; \$3,400; \$1,700; \$850; \$425
5 Benchmark 58 Handicap
APPRENTICE RIDERS ONLY. Apprentices riders will be allocated by random draw.
 1400m Of \$16,000 - \$10,000; \$3,200; \$1,600; \$800; \$400

6 Benchmark 72 Handicap
 2100m Of \$16,000 - \$10,000; \$3,200; \$1,600; \$800; \$400
7 \$ VAMOS STAKES
 For Fillies & Mares.
 Apprentices cannot claim 1400m - Weight for Age - GROUP 3
 Of \$125,000 - \$75,000; \$22,500; \$11,250; \$5,625; \$3,125; \$2,500; \$2,500; \$2,500
NOMINATIONS:
 \$165 (GST incl)
FINAL ACCEPTANCE:
 \$1,375 (GST incl)
SCRATCHING FEE:
 \$687.50 (GST inclusive)
BALLOTING CONDITIONS:
 Refer Local Rule 11.1(e)

WEDNESDAY 28 FEBRUARY 2018
TASMANIAN TURF CLUB
 Luxbet Racing Centre
 Launceston
\$ FEATURE RACES
 NOMS close 12 noon Wednesday, 21 February 2018
 HCP declared by 3pm
 Thursday, 22 February 2018
 ACC close 9am
 Friday, 23 February 2018
 RIDERS close 12 noon
 Friday, 23 February 2018

1 \$ GOLD SOVEREIGN STAKES
 For 2YO.
 Apprentices cannot claim 1200m - Set Weights - LISTED
 Of \$100,000 - \$60,000; \$18,000; \$9,000; \$4,500; \$2,500; \$2,000; \$2,000; \$2,000
NOMINATIONS:
 \$165 (GST inclusive)
FINAL ACCEPTANCE:
 \$1,100 (GST inclusive)
SCRATCHING FEE:
 \$550 (GST inclusive)
BALLOTING CONDITIONS:
 Refer Local Rule 11.1(e)
2 \$ 3YO CLASSIC
 Apprentices cannot claim 1200m - Handicap Of \$30,000 - \$18,150; \$5,400; \$2,700; \$1,350; \$600; \$600; \$600; \$600
SCRATCHING FEE:
 \$165 (GST incl)
BALLOTING CONDITIONS:
 Refer Local Rule 11.1(e)
3 3YO & Upwards Maiden
 1400m - Set Weights Of \$16,000 - \$10,000; \$3,200; \$1,600; \$800; \$400
4 Class 1 Handicap
 1200m Of \$16,000 - \$10,000; \$3,200; \$1,600; \$800; \$400
5 Benchmark 62 Handicap
 2100m Of \$16,000 - \$10,000; \$3,200; \$1,600; \$800; \$400

6 Benchmark 68 Handicap
 1600m Of \$16,000 - \$10,000; \$3,200; \$1,600; \$800; \$400
7 Open Handicap
 1200m Of \$25,000 - \$15,500; \$5,000; \$2,500; \$1,250; \$750
8 \$ MOWBRAY STAKES
 Apprentices cannot claim 1600m - Weight for Age - LISTED
 Of \$100,000 - \$60,000; \$18,000; \$9,000; \$4,500; \$2,500; \$2,000; \$2,000; \$2,000
NOMINATIONS:
 \$165 (GST inclusive)
FINAL ACCEPTANCE:
 \$1,100 (GST inclusive)
SCRATCHING FEE:
 \$550 (GST inclusive)
BALLOTING CONDITIONS:
 Refer Local Rule 11.1(e)

9 \$ BETFAIR LAUNCESTON CUP
 Apprentices cannot claim 2400m - Open Handicap GROUP 3
 Of \$200,000 - \$120,000; \$36,000; \$18,000; \$9,000; \$5,000; \$4,000; \$4,000; \$4,000
LEG 2 OF \$100K TASRACING CUP DOUBLE
NOMINATIONS:
 \$440 (GST inclusive)
FINAL ACCEPTANCE:
 \$2,200 (GST incl)
SCRATCHING FEE:
 \$1,100 (GST incl)
BALLOTING CONDITIONS:
 Refer Local Rule 11.1(e)
BALLOT EXEMPTIONS:
 The winner of the 2018 Sydeston Night Cup and the 2018 Tasmanian Derby will be exempt from ballot for the 2018 Luxbet Launceston Cup.
 The winner of the 2018 Tasmanian Derby is eligible for ballot free entry and 3YO's may be allocated 52kg, in line with Age Allowance.

N.B. Conditions of Entry: Horses declared to be emergencies and which fail to gain a start, or horses which are eliminated under the balloting conditions are still liable for the nomination fees and only the declaration of acceptance fee will be refunded. Acceptance fees must be paid prior to the horse starting. Provided that notwithstanding the foregoing, Tasracing may in its absolute discretion eliminate any horse or horses from this race and/or exclude any horse or horses from the operation of the preceding elimination conditions. Tasracing reserves the right from time to time to alter the date of running, to make any alteration or modification in this race, to cancel the meeting or any portion thereof, to alter time for taking entries or acceptances, also the right to reject at any time any entry submitted to or for them.

WEDNESDAY 7 MARCH 2018	SUNDAY 11 MARCH 2018	WEDNESDAY 14 MARCH 2018	WEDNESDAY 21 MARCH 2018	SUNDAY 25 MARCH 2018	WEDNESDAY 28 MARCH 2018
<p>TASMANIAN TURF CLUB Luxbet Racing Centre Launceston</p> <p>NIGHT MEETING NOMS close 12 noon Thursday, 1 March 2018 HCP declared by 3pm Friday, 2 March 2018 ACC close 9am Monday, 5 March 2018 RIDERS close 12 Noon Monday, 5 March 2018</p> <p>1 3YO & Upwards Maiden 1100m - Set Weights Of \$16,000 - \$10,000; \$3,200; \$1,600; \$800; \$400</p> <p>2 3YO & Upwards Maiden 1200m - Set Weights Of \$16,000 - \$10,000; \$3,200; \$1,600; \$800; \$400</p> <p>3 Maiden/Class 1 1600m - Set Weights Of \$16,000 - \$10,000; \$3,200; \$1,600; \$800; \$400</p> <p>4 Class 1 Handicap 1400m Of \$16,000 - \$10,000; \$3,200; \$1,600; \$800; \$400</p> <p>5 Benchmark 58 Handicap 1200m Of \$16,000 - \$10,000; \$3,200; \$1,600; \$800; \$400</p> <p>6 Benchmark 62 Handicap 1600m Of \$16,000 - \$10,000; \$3,200; \$1,600; \$800; \$400</p> <p>7 Benchmark 68 Handicap 1200m Of \$16,000 - \$10,000; \$3,200; \$1,600; \$800; \$400</p> <p>8 Benchmark 72 Handicap 1400m Of \$16,000 - \$10,000; \$3,200; \$1,600; \$800; \$400.</p>	<p>TASMANIAN RACING CLUB Luxbet Park Hobart</p> <p>NOMS close 12 noon Monday, 5 March 2018 HCP declared by 3pm Tuesday, 6 March 2018 ACC close 9am Wednesday, 7 March 2018 RIDERS close 12 noon Wednesday, 7 March 2018</p> <p>1 2YO Maiden 1100m - Set Weights Of \$19,000 - \$11,875; \$3,800; \$1,900; \$950; \$475</p> <p>2 3YO & Upwards Maiden 1000m - Set Weights Of \$16,000 - \$10,000; \$3,200; \$1,600; \$800; \$400</p> <p>3 3YO & Upwards Maiden 1400m - Set Weights Of \$16,000 - \$10,000; \$3,200; \$1,600; \$800; \$400</p> <p>4 Maiden/Class 1 2100m - Set Weights Of \$16,000 - \$10,000; \$3,200; \$1,600; \$800; \$400</p> <p>5 Class 1 Handicap 1200m Of \$16,000 - \$10,000; \$3,200; \$1,600; \$800; \$400</p> <p>6 Class 3 Handicap 1100m Of \$17,000 - \$10,625; \$3,400; \$1,700; \$850; \$425</p> <p>7 Benchmark 62 Handicap 1400m Of \$16,000 - \$10,000; \$3,200; \$1,600; \$800; \$400</p>	<p>TASMANIAN TURF CLUB Luxbet Racing Centre Launceston</p> <p>NIGHT MEETING NOMS close 12 noon Thursday, 8 March 2018 HCP declared by 5pm Thursday, 8 March 2018 ACC close 9am Friday, 9 March 2018 RIDERS close 12 Noon Friday, 9 March 2018</p> <p>1 3YO & Upwards Maiden 1200m - Set Weights Of \$16,000 - \$10,000; \$3,200; \$1,600; \$800; \$400</p> <p>2 Benchmark 62 Handicap 1200m Of \$16,000 - \$10,000; \$3,200; \$1,600; \$800; \$400</p> <p>3 Benchmark 68 Handicap 1100m Of \$16,000 - \$10,000; \$3,200; \$1,600; \$800; \$400</p> <p>4 Benchmark 72 Handicap 1600m Of \$16,000 - \$10,000; \$3,200; \$1,600; \$800; \$400</p> <p>5 Fillies & Mares Handicap Apprentices cannot claim 1600m Of \$25,000 - \$15,500; \$5,000; \$2,500; \$1,250; \$750</p> <p>6 Open Handicap 1200m Of \$20,000 - \$12,500; \$4,000; \$2,000; \$1000; \$500</p> <p>7 Tasmanian St Leger Apprentices cannot claim 2600m - Quality Handicap Of \$25,000 - \$15,500; \$5,000; \$2,500; \$1,250; \$750</p>	<p>TASMANIAN TURF CLUB Luxbet Racing Centre Launceston</p> <p>NIGHT MEETING NOMS close 12 noon Thursday, 15 March 2018 HCP declared by 3pm Friday, 16 March 2018 ACC close 9am Monday, 19 March 2018 RIDERS close 12 Noon Monday, 19 March 2018</p> <p>1 3YO & Upwards Maiden 1200m - Set Weights Of \$16,000 - \$10,000; \$3,200; \$1,600; \$800; \$400</p> <p>2 3YO & Upwards Maiden 1400m - Set Weights Of \$16,000 - \$10,000; \$3,200; \$1,600; \$800; \$400</p> <p>3 Class 1 Handicap 1200m Of \$16,000 - \$10,000; \$3,200; \$1,600; \$800; \$400</p> <p>4 0 - 62 Rating 1400m Of \$16,000 - \$10,000; \$3,200; \$1,600; \$800; \$400</p> <p>5 Benchmark 62 Handicap 2100m Of \$16,000 - \$10,000; \$3,200; \$1,600; \$800; \$400</p> <p>6 Benchmark 72 Handicap 1200m Of \$16,000 - \$10,000; \$3,200; \$1,600; \$800; \$400</p> <p>7 Benchmark 72 Handicap 1400m Of \$16,000 - \$10,000; \$3,200; \$1,600; \$800; \$400</p>	<p>TASMANIAN RACING CLUB Luxbet Park Hobart</p> <p>NOMS close 12 noon Monday, 19 March 2018 HCP declared by 3pm Tuesday, 20 March 2018 ACC close 9am Wednesday, 21 March 2018 RIDERS close 12 noon Wednesday, 21 March 2018</p> <p>1 3YO & Upwards Maiden 1000m - Set Weights Of \$16,000 - \$10,000; \$3,200; \$1,600; \$800; \$400</p> <p>2 3YO & Upwards Maiden 1200m - Set Weights Of \$16,000 - \$10,000; \$3,200; \$1,600; \$800; \$400</p> <p>3 Maiden/Class 1 1600m - Set Weights Of \$16,000 - \$10,000; \$3,200; \$1,600; \$800; \$400</p> <p>4 Class 1 Handicap 1100m Of \$16,000 - \$10,000; \$3,200; \$1,600; \$800; \$400</p> <p>5 Class 1 Handicap 1400m Of \$16,000 - \$10,000; \$3,200; \$1,600; \$800; \$400</p> <p>6 Benchmark 62 Handicap 1000m Of \$16,000 - \$10,000; \$3,200; \$1,600; \$800; \$400</p> <p>7 Benchmark 82 Handicap 1600m Of \$16,000 - \$10,000; \$3,200; \$1,600; \$800; \$400</p>	<p>TASMANIAN TURF CLUB Luxbet Racing Centre Launceston</p> <p>NIGHT MEETING NOMS close 12 noon Thursday, 22 March 2018 HCP declared by 3pm Friday, 23 March 2018 ACC close 9am Monday, 26 March 2018 RIDERS close 12 noon Monday, 26 March 2018</p> <p>1 2YO Maiden 1200m - Set Weights Of \$19,000 - \$11,875; \$3,800; \$1,900; \$950; \$475</p> <p>2 3YO & Upwards Maiden 1400m - Set Weights Of \$16,000 - \$10,000; \$3,200; \$1,600; \$800; \$400</p> <p>3 Benchmark 58 Handicap 1200m Of \$16,000 - \$10,000; \$3,200; \$1,600; \$800; \$400</p> <p>4 Benchmark 62 Handicap 1400m Of \$16,000 - \$10,000; \$3,200; \$1,600; \$800; \$400</p> <p>5 Benchmark 68 Handicap 1600m Of \$16,000 - \$10,000; \$3,200; \$1,600; \$800; \$400</p> <p>6 Benchmark 72 Handicap 1200m Of \$16,000 - \$10,000; \$3,200; \$1,600; \$800; \$400</p> <p>7 Benchmark 82 Handicap 2100m Of \$18,000 - \$11,250; \$3,600; \$1,800; \$900; \$450</p> <p>8 Open Handicap 1200m Of \$20,000 - \$12,500; \$4,000; \$2,000; \$1000; \$500</p>

King Island Racing 2017-2018

DECEMBER 2017

MON	TUE	WED	THU	FRI	SAT	SUN
				1	2	3
4	5	6	7	8	9	10
11	12	13	14	15	16	17
18	19	20	21	22	23	24
25	26	27	28	29	30	31

JANUARY 2018

MON	TUE	WED	THU	FRI	SAT	SUN
1	2	3	4	5	6	7
8	9	10	11	12	13	14
15	16	17	18	19	20	21
22	23	24	25	26	27	28
29	30	31				

If required races can change to trophy class races:
 • 25 acceptors required for 5 races
 • A race with less than 4 acceptors will be deleted.

For additional information contact:
The Secretary Chris Conn
 Telephone: 0428 635 644
 Email: kingislandracing@gmail.com
 Web: www.kiracing.com.au
 Address: King Island Racing Club
 PO Box 257, Currie, King Island

RACE DATES

Saturday 2 December 2017
BEEF DAY
 The first meeting of the summer carnival, where many horses hit the track for the first time.

Saturday 16 December 2017
LADIES N TRADIES DAY
 Dress up, dress down, dress for fun. Fashions on the Field Day.

Tuesday 26 December 2017
BOXING DAY
 This event helps finalise the fields for the New Years Day cup feature races.

Sunday 1 January 2018
NEW YEARS DAY
 Both the Pacing and Galloping Cups, being the highlight events of the King Island racing calendar.

Saturday 13 January 2018
KING ISLAND DAIRY DAY
 Dairy Day, where sponsorship is mostly provided by King Island Dairy and companies that provide supplies for the factory at Looorana.

Saturday 20 January 2018
MARITIME DAY
 Celebrates King Island's connection to and reliance on the shipping services which deliver so many of the supplies needed for our personal and business lives on King Island.

Saturday 27 January 2018
VORTEX CUP FLY IN DAY
 Final Race day for the King Island Racing Club season. Why not fly in for the day, enjoy a great day at the races or stay for the weekend and enjoy King Island's hospitality. An action packed day with both our dual codes of racing plus novelty events and entertainment throughout the day. Check out Vortex website for Vortex Fly in Day special deals

GET TRACKSIDE

How to Get You and Your Friends Track side:

AIRLINES FLYING TO KING ISLAND

Vortex Airlines
 Flying out of Moorabbin

Rex Airlines
 Flying out of Tullamarine

King Island Airlines
 Flying out of Moorabbin

Sharp Airlines
 Flying out of Burnie, and Launceston in Tasmania and Essendon in Victoria

DO YOU NEED MORE INFORMATION ABOUT THE FACILITIES ON KING ISLAND?

Accommodation
 Tours
 Restaurants
 Travel & Transport
www.kingisland.org.au

GET TRACKSIDE ... KING ISLAND RACING

The King Island Racing Club Inc. holds seven race meetings each season during the December January period with a field of approximately 35 gallopers and 15 harness horses. The Race Club boasts full TAB and Sky Channel facilities, a bookmaker, race broadcaster, two licensed bars and kiosks for light refreshments and a 1600m turf track. Located on the North Road just on the outskirts of Currie the grassed hill provides ample space for picnics, and the tiered seating in front of the finish line allows for an excellent view of all races.

It is a unique day of racing, having both codes running on the same day. Race Days are relaxed community gatherings with refreshments and food readily available.

Get organised Now! Special events for all visitors ...