



# **TASRACING COVID SAFE STANDARD OPERATING PROCEDURES**

## **GREYHOUND TRIALS - HOBART**





## EXECUTIVE SUMMARY

Greyhound trials are critical to the safe, efficient operation of normal race meetings.

**Greyhound Trials are to be conducted at a racetrack with no more than 10 people in any one operational location of the racecourse facilities.**

### **Greyhound trials definition:**

- Trials are used as a key element in the education of greyhounds for the purpose of fitness, remedial work, injury management and education.
- They are significantly different to trials held for harness and thoroughbred codes in that they are not carried out under a formal environment.
- Trials, which are held on a racecourse behind the mechanical lure which is used on race day, are held over a variety of distances and the starting boxes can be utilised by the trainer if so desired. These trials usually consist of:
  - One greyhound (on occasion two or three) starting from the boxes
  - One greyhound (on occasions two) being slipped behind the lure
  - Education of pups – teaching them to chase the mechanical lure
- Slipped is the process of holding a dog on the leash on the track and slipping or letting it go as the lure moves past.
- Trials are also referred to in the process of training on the straight tracks where the majority of exercise is by way of free galloping with restricted sessions available to chase a drag lure.
- These tracks (Brighton, Launceston and Ulverstone) are currently permitted as training venues and require bookings to be made for the use of the facility.
- These training venues do not fall within the following protocols and requirements for trials.



## EXECUTIVE SUMMARY (cont')

Tasracing's greyhound trials will be managed strictly in-line with these CSOPs and will also adhere to WorkSafe Tasmanian's Guidelines for COVID Safe Workplace operations.

Tasracing has allocated a new supervisory role in the form of 'Track Marshall'. These Track Marshalls will oversee and enforce these CSOPs on trial day.

WorkSafe Tasmania's COVID Safe minimum standards required to be met at a workplace are as follows:

- manage the risks of a person contracting or spreading COVID-19 in the workplace
- implement and maintain a cleaning schedule across the workplace
- have good hygiene procedures and practices (such as washing and/or sanitising of hands)
- ensure workers who have been instructed to quarantine or self-isolate don't come to the workplace
- make sure physical distancing requirements are met by workers, contractors and others entering, leaving or moving around the workplace.
- provide information, training and supervision on how the risks of COVID-19 are to be managed and ensure all processes and procedures are applied by the workers.
- provide information and instruction to other people who attend the workplace about how they are to comply with your processes and procedures, and make sure they apply them.



## TRIAL DAY PROTOCOLS

### BEFORE LEAVING HOME

If you identify as any of the below factors, it is recommended you stay home and not attend any meeting.

- Are suffering coronavirus symptoms or are otherwise unwell.
- Are subject to self-isolation requirements imposed by the Government
- Have been in close contact with a person suspected or confirmed to have coronavirus.

People aged 70 years and over, people aged 65 years and over with chronic medical conditions, people with compromised immune systems, and Aboriginal and Torres Strait Islander people over the age of 50, are at greater risk of more serious illness if they are infected with COVID-19. Chronic medical conditions include diabetes, lung disease, heart disease, cancer and kidney failure. There is currently no cure or vaccine for COVID-19 coronavirus, or immunity in the community, so you need to protect yourself. so you must exercise a high degree of caution when deciding to attend race meetings and trials. Tasracing strongly recommends that people most at risk continue to stay at home, avoid contact with others and carefully consider whether attending race meetings and trial sessions (including accessing licensed kennels) will compromise their health. Should you attend race meetings and trial sessions, Tasracing reminds you to practice good hygiene and physical distancing measures to ensure your health and wellbeing.

Any race day staff or participants will be refused entry at the venue if they display any of the following symptoms:

- *Fever above 38 degrees*
- *Cough*
- *Any flu or cold-like symptoms.*

### VENUE RESTRICTIONS AND HYGIENE

- No food or drink will be available at venues.
- Tasracing will permanently open doors where possible to allow access without touching surfaces.
- Tasracing will provide suitable gloves for participants to wear if they wish.
- Hand sanitiser will be supplied at the entry to the venue, toilets, scales, starting boxes and catching pen area.
- Attendees should wash/sanitise their hands thoroughly throughout the trials where possible.
- All areas apart from the weighing scales will be closed.
- All work stations to be wiped clean before use and after each trial session.



## **TRIAL DAY PROTOCOLS (cont')**

### **VENUE ENTRY PROTOCOLS**

- The venue will have only one designated entry point.
- Photo ID must be presented by ALL persons seeking entrance.
- Tasracing encourages all licensed participants to play an important role in helping stop the spread of COVID-19 by downloading the COVIDSafe app. Downloading the app is something you can do to protect yourself, your family and the industry. The app helps expedite contact tracing and serves to benefit the racing industry in the event the app user tests positive for COVID-19. If you do not wish to download the app or do not have a smartphone to download the app, Tasracing recommends that you maintain a travel log to perform a similar function.
- The minimum requirement for travel detail to be kept by a participant attending a trial meeting (who does not have the COVIDSafe app) will be as follows:
  - Day and Date
  - Name of persons making the journey
  - Address from which departed
  - Location of any stops during the journey (road, town, business)
- Security staff will check every attendee off the official approved attendee list supplied by the club on trial day.
- Fever testing will be conducted at the venue entry. Any person who returns a temperature reading of more than 38 degrees, and/or submits answers which indicate possible COVID-19 exposure will be refused entry to the racecourse.
- A hygiene station will be located at the entrance.

### **TRANSPORT CONTROLS**

- On commencement of travel, personnel are to avoid un-necessary toilet, food, petrol or other stops.
- All travel must be completed in the one day. (no overnight stops).

### **SOCIAL DISTANCING**

- All personnel are required to comply with the strict social distancing requirements while attending trial sessions.
- Minimum distance of 1.5 metres between any two personnel.

### **OBEY OFFICIALS AND COVID-19 TRACK MARSHALLS**

- Track Marshalls will be observing all personnel at all times to ensure compliance with protocols.
- Any participant who is found to be breaching a rule/protocol will be reported to the stewards for inquiry and will be subject to any penalty the stewards deem appropriate and will be required to leave the race venue immediately.



## **TRIAL DAY PROTOCOLS (cont')**

### **DUTIES OF TRACK MARSHALLS**

- Tasracing will provide COVID-19 Track Marshalls at every trial session.
- Track Marshalls will be located at the car park area, starting boxes and catching pen.
- Track Marshalls will be responsible for ensuring all documented protocols are adhered to by all persons.
- Track Marshalls may demand identification information and will be authorised to report breaches to the stewards.

### **VENUE SIGNAGE AND SOCIAL DISTANCE MARKINGS**

- Tasracing will display clear instructions and reminders on these protocols at the venue.
- Floor and ground markings will be installed (where feasible/possible) to assist all personnel to adhere to social distancing protocols.
- COVID-19 Track Marshalls will monitor personnel in relation to adhering to floor or ground markings.

### **WET WEATHER GEAR**

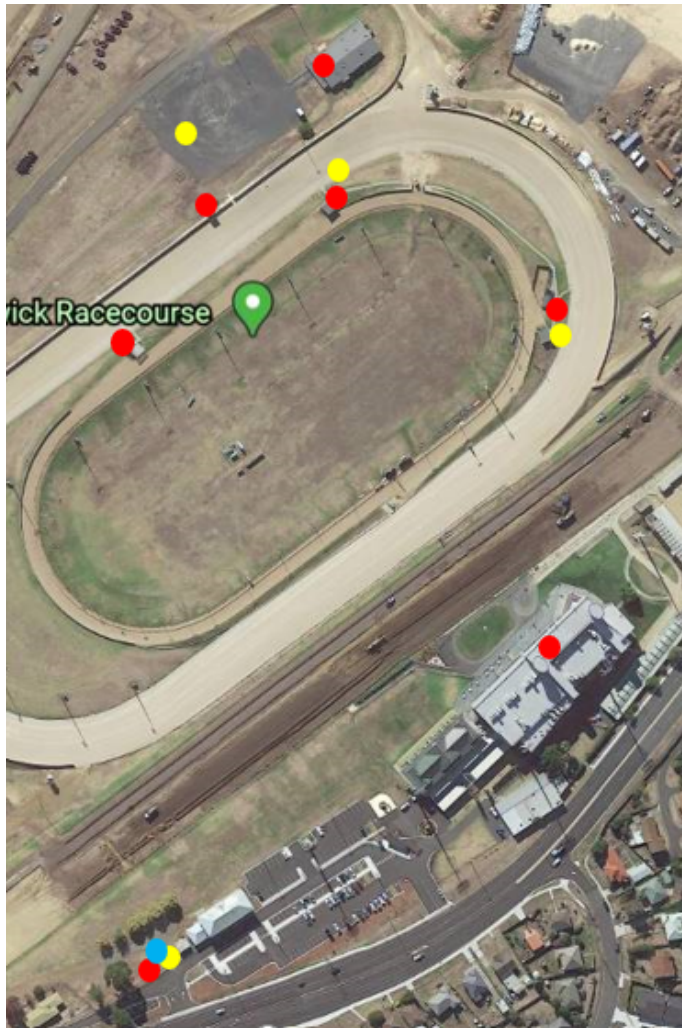
There will be no Wet Weather gear available at the track. All participants are required to provide their own Wet Weather gear.

## Hobart Trial locations

*Note - each track operational location must have less than ten personnel at all times*



## Hobart Site Map – Facilities



- Security Guards/Track Marshalls
- Hygiene Station
- Temperature Testing



## GREYHOUND TRIALS – SUMMARY OF OPERATIONS

- There are no restrictions, apart from travel restrictions imposed by the Government, on greyhounds in one region being transferred to the kennels and control of a trainer in another region.
- Trial sessions on the racetracks are permitted at Hobart and Launceston only.
- Trials will be subject to a booking requirement which will be managed by the Hobart Greyhound Racing Club staff.
- Trials are to be paid for at the starting position.

### Frequency of trials:

- Trials will be held at Hobart on Tuesday nights commencing at 6.30 pm and Saturday morning commencing at 8.00 am for runback trials and 9.00am for normal trials and will be held over all distances up to 461 metres.

### Booking of Trials

- Trainers are required to book trials by 3pm on Tuesday for Tuesday trials and by 3pm on Friday for Saturday trials and stipulate the distances over which they wish to trial.
- Trainers, when booking their trial session, are required to advise the name of all the persons who will be attending the greyhounds at the trials (themselves included).
- A maximum of three greyhounds only will be permitted in any one trial.
- One Trainer and one catcher only will be permitted for a trial session unless the greyhounds are being run in field trials whereby the following schedule will be applied:
  - Field trial – 3 greyhounds – two handlers and two catchers
- A trainer may have one other person for each group of up to 6 greyhounds above the first 6 greyhounds being trialled to assist with the emptying out and weighing (if done). These additional assistants will also be permitted to attend the greyhounds during the trialling sessions either at the start or outside the catching pen area (NOT inside the catching pen area).



## GREYHOUND TRIALS – SUMMARY OF OPERATIONS (cont')

### Prior to Arrival at Track

- It is recommended that participants download and utilise the COVIDSafe app and will be requested to produce their phone and show the installation and operation of the app on entry to the venue. Participants who fail to produce a phone or produce a phone without the app installed and functional will be required to provide a travel log prior to entry.
- Any person who is in a high-risk group such as older people or people with underlying illnesses that make them more vulnerable to respiratory disease, including those with diabetes, chronic lung disease, kidney failure and people with suppressed immune systems, should not attend race meetings or trial sessions (including accessing licensed kennels).

### Arrival Time at track

- Trainers must arrive at the venue in accordance with the following schedule:
  - Up to 4 greyhounds – 15 minutes prior to their booking time
  - Up to 10 greyhounds – 25 minutes prior to their booking time
  - More than 10 greyhounds – 35 minutes prior to their booking time.
- On arrival at the track the trainer must make their way to the car park area behind the Lure Tower and the kennels building.
- From this area trainers may empty and weigh their greyhound while ensuring social distancing of a minimum of 1.5 metres.
- The kennel building will be open for access to the toilets and to weigh greyhounds only and must be departed from immediately.
- Once emptied and weighed, greyhounds are to be put back in vehicle and the trainer (and assistant/s) remain in their vehicle.



## **GREYHOUND TRIALS – SUMMARY OF OPERATIONS (cont')**

### **Ready to Trial**

- When called the Trainer will move his vehicle to the top of the ramp at the entrance to the harness track where they are required to wait until signalled by the starter to proceed to the starting point.
- The catcher is to remain in the vehicle and can only alight the vehicle at the 461 boxes and then make their way to the catching pen.

### **Trialling**

- Trials will be conducted from the 461 boxes forward, in order of each starting point (as required by the Trainer).

### **After Trialling**

- Immediately after the last greyhound has trialled the trainer is to drive to the catching pen and collect their greyhound/s and catcher/assistants.
- The wash area behind the 599 boxes is not to be used. Trainers may transport their greyhounds back to the car park area and utilise the wash bay at the back of the kennels to wash and water greyhounds. Trainers must vacate the venue immediately once they have appropriately taken care of the welfare of their greyhound/s.

## GREYHOUND TRIALS SCHEDULE

| Day      | Date       | Venue      | Type          | Start Time (From) |
|----------|------------|------------|---------------|-------------------|
| Tuesday  | 19/05/2020 | Launceston | Run-on        | 9.00am            |
| Tuesday  | 19/05/2020 | Hobart     | Run-on        | 6.30pm            |
| Friday   | 22/05/2020 | Launceston | Normal Trials | 6.00pm            |
| Saturday | 23/05/2020 | Hobart     | Run-on        | 8.00am            |
| Saturday | 23/05/2020 | Hobart     | Normal Trials | 9.00am            |
| Tuesday  | 26/05/2020 | Launceston | Run-on        | 9.00am            |
| Tuesday  | 26/05/2020 | Hobart     | Normal Trials | 6.30pm            |
| Friday   | 29/05/2020 | Launceston | Normal Trials | 6.00pm            |
| Saturday | 30/05/2020 | Hobart     | Run-on        | 8.00am            |
| Saturday | 30/05/2020 | Hobart     | Normal Trials | 9.00am            |
| Tuesday  | 2/06/2020  | Launceston | Run-on        | 9.00am            |
| Tuesday  | 2/06/2020  | Hobart     | Normal Trials | 6.30pm            |
| Friday   | 5/06/2020  | Launceston | Normal Trials | 6.00pm            |
| Saturday | 6/06/2020  | Hobart     | Run-on        | 8.00am            |
| Saturday | 6/06/2020  | Hobart     | Normal Trials | 9.00am            |
| Tuesday  | 9/06/2020  | Launceston | Run-on        | 9.00am            |
| Tuesday  | 9/06/2020  | Hobart     | Normal Trials | 6.30pm            |
| Friday   | 12/06/2020 | Launceston | Normal Trials | 6.00pm            |
| Saturday | 13/06/2020 | Hobart     | Run-on        | 8.00am            |
| Saturday | 13/06/2020 | Hobart     | Normal Trials | 9.00am            |