

THOROUGHBRED

TASMANIAN THOROUGHBRED RACING CALENDAR

DEC 2021 - MAR 2022




tasracing

NEWHART

Ladbroke's Tasmanian
2021 Horse of the Year

ANNUAL AWARDS

2021 Thoroughbred Annual
Award Winners & Hall of
Fame Inductees gallery

APPRENTICES

on the rise - investing
in our future


tasracing

BET MAPS 

SEE THE MONEY
ON THE MAP



Ladbroke's

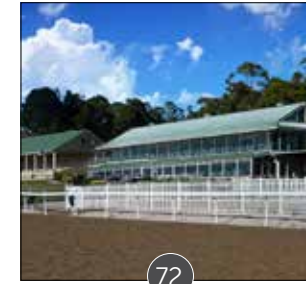
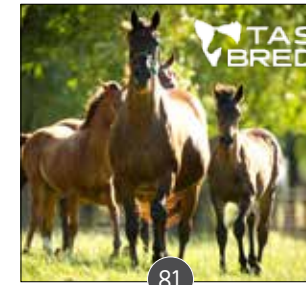
IS GAMBLING A PROBLEM FOR YOU? CALL GAMBLING HELP ON 1800 858 858 OR VISIT WWW.GAMBLINGHELPONLINE.ORG.AU

GIDDY UP!
LADBROKE IT!



Ladbroke's

IS GAMBLING A PROBLEM FOR YOU? CALL GAMBLING HELP ON 1800 858 858 OR VISIT WWW.GAMBLINGHELPONLINE.ORG.AU



FEATURES

Summer Racing - Key messages	4-5
Feature Race Dates	6
Ladbroke's Tasmanian Double Cups Bonus	7
Cover story - Newhart	8-13
Editorial - Apprentices on the rise	14-16
Annual Awards Night gallery - Recognising those who Dared to Dream	19-33
Off The Track - Horse Spotlight - Our Mate Duncan	36-37

SECTION 1: PROGRAMME INFORMATION 42-63

Programme notes, feature races, feature race conditions, balloting conditions and exemptions, King Island racing and programme detail. Programme grid & barrier trials [Inside back cover]

SECTION 2: RACING INFORMATION 64-82

Track rating scale, Tasmanian racecourses [including track detail, safety limits, grass gallops, jump out times, and track records]. Tasracing thoroughbred schedule of fees, set weights scale, RBH template, and TASBRED.

SECTION 3: INDUSTRY INFORMATION 83-88

Official updates from Racing Australia, Tasracing and the Office of Racing Integrity.

SECTION 4: CONTACT LISTINGS 89-96

Licensed persons details including trainers, farriers, restricted plating, jockeys, and trial riders. Tasmanian stallion listing. Industry contact information for Tasracing, Tasmanian Racing Clubs, Office of Racing Integrity and Racing Victoria.

Members of the Board:

Gene Phair [Chair], Helen Galloway [Vice Chair], David Gamier, Joel Wallace, Michael Gordon, Robyn Wishaw, Martin Wallace

Chief Executive Officer | Paul Eriksson
 Head of Marketing | Sam Steven
 Racing Operations Manager | Liam Swan
 Racing | Blayne Hudson, Stewart Brown, Angela Barrett
 Animal Welfare Manager | Belinda Lewis
 Media Manager | Peter Staples
 Publication Design | Ronnell Zanotti

Photography | Sharon Lee Chapman - Fast Track Photography, Robyn Wishaw, Peter Staples, Bill Hayes, Alastair Bett Photography

Tasracing
 Ladbroke's Park Elwick
 2-6 Goodwood Rd
 Glenorchy TAS 7010
 Telephone:
 (03) 6212 9333



TASMANIAN

SUMMER racing



Hon. Jane Howlett MLC.
MINISTER FOR RACING

The Tasmanian racing industry has benefited significantly from Ladbrokes commitment to all codes, and in this their third year of support we have seen more interest in our racing among the national market than ever before.

The Summer Racing Carnival in Tasmania is the engine room for much of the positive economic and social benefits that flow from racing. With investment by owners, expenditure by race goers on retail, hospitality and accommodation, and the flow on of prizemoney – it's easy to see how important this carnival is to the racing industry and Tasmania.

All host clubs across all three codes are to be congratulated for putting together what I am sure will be a successful carnival in 2021/22.

I wish all owners, trainers, jockeys, harness drivers, greyhound participants and clubs the best of luck for the Ladbrokes Tasmanian Summer of Racing 2021/22.

Another vital component of the Carnival is the annual Yearling Sale's for both the thoroughbred and harness codes. I wish to thank Magic Millions for their ongoing support of the Tasmanian thoroughbred breeding industry and wish all breeders a successful sale.

Finally I hope the many thousands who will attend a Summer Racing event have an enjoyable time and perhaps even back a winner!



Karl deKroo
LADBROKES AUSTRALIA
DIRECTOR - STAKEHOLDER
ENGAGEMENT

Ladbrokes Australia is thrilled to again partner with Tasracing and the respective clubs to present the Ladbrokes Tasmanian Summer Racing Carnival.

2021 has been a strong year for Ladbrokes partnership with Tasmanian racing. With improved wagering performance in all codes and new marketing and content campaigns showcasing Tasmania's iconic racing participants. Ladbrokes is a company with a rich racing pedigree. It is at the core of everything we do and we believe strongly in backing the industry that supports us.

The Ladbrokes Tasmanian Summer Racing Carnival is one of the highlights of the racing season, and we hope the 2021/22 edition is a celebration of the very best of Tasmania's thoroughbred, harness and greyhound codes.

Once again we will be sponsoring a host of the key races over the Carnival as well as offering the Ladbrokes Tasmanian Double Cups Bonus, with \$100,000 cash on offer for any horse which can win both the Hobart and Launceston Cups.

We look forward to great racing, and a fabulous Ladbrokes Tasmanian Summer Racing Carnival.



Paul Eriksson
TASRACING
CHIEF EXECUTIVE OFFICER

Welcome to the Tasmanian Summer Racing Carnival edition of the Tasmanian Thoroughbred Racing Calendar.

Covid has taught us that the key to a successful carnival is to work more closely than ever before with the host clubs, our broadcast partner Sky, and our own media team to create an experience for customers no matter where they are. If they are lucky enough to attend trackside, we've got some great race day experiences lined up. For those who prefer or are forced to enjoy the finest racing Tasmania has to offer from their home – we've got some equally entertaining options! Our Formplus PRO digital experience will bring even more camera angles, more live trackside coverage from more Tasmanian racing experts and more opportunity to feel like you're really at the track!

I've often said the Tasmanian thoroughbred racing industry is made up of men, women and racing animals with more grit and determination than anywhere else in the world! And what I love about our Summer Carnival is that this becomes even more evident than at any other time of year.

From trackside at Devonport Cup day on Wednesday 6 January 2022 on the synthetic, through Hobart Cup Day on the magnificent Strathayr turf at Elwick and then on to the revitalised Mowbray track for Ladbrokes Launceston Cup Day - Tasracing TV, Formplus PRO, SEN, RSN and Sky will have you covered.

We go into the 2022 carnival with good increases in thoroughbred base stakes. Across all carnival race meetings there is \$5,835,500 in stakes up for grabs.

On behalf of all participants and clubs I thank Ladbrokes for their continued investment and support for this year's carnival. This is Ladbrokes third Tasmanian summer carnival as naming rights sponsor and we look forward to seeing our tracks bathed in red and white throughout the Summer.

Finally, I wish every contender in this year's Ladbrokes Tasmanian Summer of Racing Carnival the best of luck and safe racing. I also wish all our customers an entertaining and responsible carnival.

TASMANIAN SUMMER FEATURE RACES 2021-22

Date	Status	Value	Feature Race	Venue	Distance	Age	Conditions
1/12/2021		\$100,000	3YO Cup	TTC	1200m	3YO	SW&P
1/12/2021	LISTED	\$125,000	Newmarket Hcp	TTC	1200m	Open	QLTY
3/12/2021		\$30,000	Ladbroke's Golden Mile	DRC	1650m	Open	HCP
8/12/2021		\$30,000	Alfa Bowl	TTC	1100m	2YO	SW
15/12/2021		\$50,000	3YO Trophy	TTC	1400m	3YO	SW
15/12/2021	LISTED	\$100,000	Conquering Stakes	TTC	1400m	Open	WFA
22/12/2021		\$50,000	Sheffield Cup	DRC	1650m	Open	HCP
29/12/2021		\$30,000	Alexandra Plate	TRC	1100m	2YO	SW
29/12/2021		\$30,000	Winzenburg	TRC	1100m	Open	QLTY
5/01/2022		\$100,000	Ladbroke's Devonport Cup	DRC	1880m	Open	HCP
7/01/2022		\$30,000	Brighton Cup	TRC	2100m	Open	QLTY
7/01/2022	LISTED	\$100,000	Tasmanian Stakes	TRC	1600m	Open	WFA
7/01/2022	LISTED	\$100,000	Tasmanian Guineas	TRC	1600m	3YO	SW
23/01/2022		\$50,000	Lady Lynette	TRC	1100m	F&M	SW&P
23/01/2022		\$50,000	Thousand Guineas	TRC	1600m	3YO F	SW
23/01/2022		\$75,000	Summer Cup	TRC	2200m	Open	WFA
23/01/2022	LISTED	\$100,000	Elwick Stakes	TRC	1100m	2YO	SW
26/01/2022		\$50,000	Ladbroke's Stakes	TTC	1200m	Open	WFA
26/01/2022	LISTED	\$100,000	Launceston Guineas	TTC	2100m	3YO	SW
6/02/2022		\$30,000	Sydeston Cup	TTC	2100m	Open	HCP
6/02/2022	LISTED	\$150,000	Gold Sovereign	TTC	1200m	2YO	SW
11/02/2022	LISTED	\$100,000	Strutt Stakes	TRC	2100m	3YO F	SW
11/02/2022	GROUP 3	\$150,000	Bow Mistress	TRC	1200m	F&M	WFA
11/02/2022	LISTED	\$150,000	Tasmanian Derby	TRC	2200m	3YO	SW
13/02/2022	LISTED	\$100,000	Thomas Lyons	TRC	1400m	Open	WFA
13/02/2022	GROUP 3	\$250,000	Ladbroke's Hobart Cup	TRC	2400m	Open	HCP
20/02/2022		\$65,000	3YO/4YO Magic Millions	TTC	1400m	3YO/4YO	SW
20/02/2022		\$75,000	2YO Magic Millions	TTC	1200m	2YO	SW
20/02/2022	LISTED	\$150,000	Tasmanian Oaks	TTC	2100m	3YO F	SW
23/02/2022		\$50,000	Royal Rambo	TTC	1200m	Open	QLTY
23/02/2022		\$75,000	3YO Classic	TTC	1200m	3YO	SW&P
23/02/2022	LISTED	\$100,000	Mowbray Stakes	TTC	1600m	Open	WFA
23/02/2022	GROUP 3	\$150,000	Vamos Stakes	TTC	1400m	F&M	WFA
23/02/2022	GROUP 3	\$250,000	Ladbroke's Launceston Cup	TTC	2400m	Open	HCP

Ladbroke's

\$100,000 DOUBLE CUP CONNECTIONS BONUS

WIN THE 2022 LADBROKES HOBART & LAUNCESTON CUPS
WITH THE SAME HORSE AND TAKE HOME A BONUS \$100,000

* \$50K OWNER | \$50K TRAINER

*Winning horse must be trained and owned by the
same connections for both races. Includes GST.

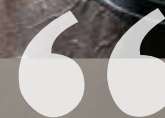
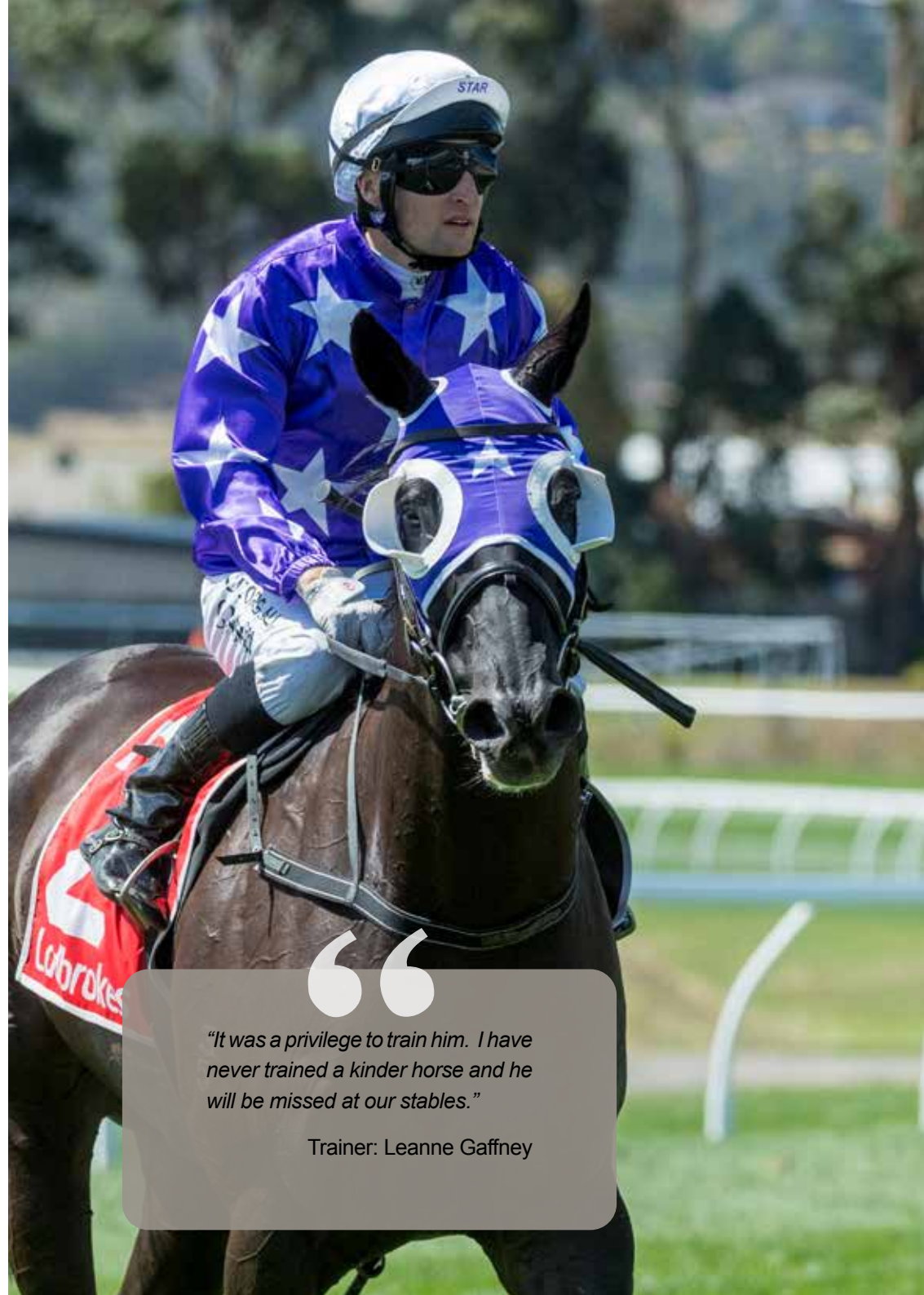
NEWHART

Story by Peter Staples
Photography by Sharon Lee Chapman &
Alastair Bett Photography



Voted 2021 Tasmanian Horse of the Year, Newhart defeated contenders Still A Star and Turk Warrior to take out the 2020-21 prestigious award.

Newhart, trained by Leanne Gaffney during the 2020-21 season, finished with four wins and two seconds from his six starts. Wins included the \$100,000 Devonport Cup, the \$100,000 Listed Thomas Lyon Stakes and the \$100,000 Listed Mowbray Stakes.



"It was a privilege to train him. I have never trained a kinder horse and he will be missed at our stables."

Trainer: Leanne Gaffney



WHEN Newhart began his campaign last season expectations were far from high even though the gelded son of Fighting Sun had ended his four-year-old season by winning the 2020 Devonport Cup.

Newhart was originally trained by Barry Campbell who guided the gelding to three wins and a second as a three-year-old before he was sidelined for two years over an incident in Adelaide involving his multiple cups-winner Eastender in March 2019.

The gelding was sent to Spreyton trainer Leanne Gaffney who admitted she had fallen in love with the powerfully built brown gelding and under her watch Newhart delivered on the potential he showed at three.

Newhart had only four starts for Gaffney during the 2019-20 season, but his fourth

outing produced a stirring victory in the \$100,000 Devonport Cup with Craig Newitt aboard, after which he was sent for a spell.

But his best was yet to come and if anyone had any doubts about the gelding's credentials they were dispelled after he cruised to an effortless win in the \$100,000 weight-for-age Mowbray Stakes at Mowbray on Launceston Cup Day.

That victory added to his second Devonport Cup and a brilliant win over Mystic Journey and Blaze Forth in the 2021 weight-for-age Thomas Lyons (1400m) at Elwick.

He also won first-up over 1400m in Launceston to kick-start his 2020-21 campaign which was the warning that this well-mannered exquisite equine athlete had come of age.

He had six starts last season for four wins and ran second in the Golden Mile and Sheffield Cup, both to talented miler Gee Gee Fiorente.

His efforts were rewarded when he was voted Tasmanian Horse of the Year ahead of Melbourne metropolitan Group 2 winner Mystic Journey and Still a Star that won the Group 3 Vamos Stakes first-up from a year off and a Listed event at Caulfield that followed a game second in a Group 3 at the same venue.

Connections dispatched Newhart to the spelling paddock after his Mowbray Stakes win but it was a sad day for Gaffney as she knew she had saddled up the gelding for the last time with the horse destined to return to the care of Campbell once his sentence expired in June.

"It was a privilege to train him, and I have never trained a kinder horse and he will be missed at our stables," Gaffney said.

Newhart was purchased by Paul Willetts Bloodstock on behalf of Denise Martin of Star Thoroughbreds at the 2017 Adelaide Magic Millions Yearling Sale for \$60,000 and Martin always had him earmarked for the Tasmanian market.

Like anyone who has had anything to do with the gelding, Martin also has developed a fondness for the horse.

Martin has been a great supporter of Tasmanian racing and Newhart joins a long line of top-class gallopers to race in the Star Thoroughbred colours in Tasmania.



“Newhart was a late developer but always showed something special and last season he really shone,” Martin said.

It was around the time of Newhart’s win in the Mowbray Stakes that Martin fell victim to life in lockdown in Sydney due to the Covid-19 pandemic.

As conditions worsened in Sydney, so did her lifestyle that centers around networking and mingling with the who’s who of racing.

Like many who walk in similar shoes, Martin has done it tough but one thing she has learned from being involved in the racing industry is that you must be resilient to survive, and she is one of the true survivors.

“This Covid is a retched thing but thankfully our racing industry has been able to continue through the worst of it and we live in hope that we all come out the other side in one piece.”

Newhart began his 21-22 season interstate, but his first two starts produced sub-par efforts, although as Campbell explained the gelding’s closing sectionals in the Testa Rossa Stakes would have been good enough for him to win nine out of 10 starts in Tasmania.

“I’m looking forward to him coming home because he will be very competitive in our weight-for-age races up to a mile,” Campbell said.

NEWHART - SEASON 2020-21

1st	LAUNCESTON 21Nov20 1400m Good4 HCP \$20,000 Ismail Toker 2nd Shady Hustle, 3rd Zatacla
2nd	DEVONPORT 04Dec20 1650m Synthetic HCP \$30,000 Ismail Toker 1st Gee Gee Fiorente, 3rd Zatacla
2nd	DEVONPORT 20Dec20 1650m Synthetic HCP \$50,000 Craig Newitt 1st Gee Gee Fiorente, 3rd Dark Wanderer
1st	DEVONPORT 06Jan21 1880m Synthetic DEVONPORT CUP \$100,000 Craig Newitt 2nd Galway Girl, 3rd White Cliffs
1st	HOBART 07Feb21 1400m Soft5 WFA LISTED \$100,000 Craig Newitt 2nd Mystic Journey, 3rd Blaze Forth
1st	LAUNCESTON 24Feb21 1600m Good4 Mowbray Stks LISTED \$100,000 Craig Newitt 2nd Mandela Effect, 3rd Swoop Dog

APPRENTICES ON THE RISE

Investing in our future

Story by Peter Staples |



Chelsea Baker
Erica Byrne Burke
Jemma Curtain
Thomas Doyle
Taylor Johnstone
Codi Jordan

Brandon Louis
Peter Lui
Kyle Maskiell
Tayah Stalker
Chloe Wells
Laura White



TOP: Chelsea Baker, Erica Byrne Burke, Jemma Curtain
LINE 2: Thomas Doyle, Brandon Louis, Codi Jordan
LINE 3: Chloe Wells, Laura White, Peter Lui
BOTTOM: Taylor Johnstone, Tayah Stalker, Kyle Maskiell

TASMANIA'S racing industry has long suffered the indignance of having insufficient depth in its riding ranks but that is about to change.

The arrival of Codi Jordan and Irish-born Erica Byrne Burke last season delivered an enormous boost to the state's riding ranks with Jordan, who is indentured to Glenn Stevenson, taking out the state apprentices' premiership by riding a treble at the last meeting of the season.

Byrne Burke, who is aligned to the Adam Trinder stable, made a late start to the season, but after two months of this season she was sitting on top of the overall premiership table with 15 wins and seven wins clear of Jordan.

Chloe Wells made her debut last season and she impressed when she landed a winner at her first race ride and looked set to make an impact on the apprentices' title, but she suffered a broken leg in a race fall in Devonport that is likely to keep her out for much of this season.

Tayah Stalker and Taylor Johnstone made their debuts this season and the 18-year-olds have delivered in spades.

Stalker, who is apprenticed to Cressy-based trainer Cameron Thompson, rode stable favourite Trojan Storm to victory at her first race ride in Devonport and Johnstone, who is apprenticed to Team Wells, guided Dark Wanderer to victory at the first night meeting under lights for trainer Sarah Cotton.

Jemma Curtain was granted her license to ride in races after her contesting over 100 trials in a 12-month period. Curtain is indentured to Stuart Gandy at Brighton and after a weight issue was laid to rest, she forged ahead in leaps and bounds.

Waiting in the wings is Chelsea Baker, the daughter of Barry and Kylie Baker who are two of the most well-respected racing identities in the state.

Barry is a trainer and stud master who also acts as a clerk of the course at Devonport meetings and wherever he is needed, while Kylie is a well-respected horsewoman riding trackwork and in trials and it was great to see mother and daughter riding against each other in trials at Longford recently.

Chelsea is likely to be the next to secure a race license and no doubt she will be another great asset to the state's riding ranks.

Tasracing has invested heavily in the education of these young riders and the arrival of two new mechanical horses is expected to assist greatly with their education.

The responsibility of guiding these young riders on their journey rests with jockey coach Stephen Maskiell, a multiple premiership-winning rider, and a Tasmanian Hall of Fame inductee.

Maskiell has put his heart and soul into developing these young riders and he believes the more invested in the apprentice program the greater the industry will become.

Stephen's son Kyle Maskiell is nearing the completion of his apprenticeship and rides without a claim other than in feature races over \$50,000, but he is regarded as one of the most talented horsemen in the state.

There are a number of young riders in the system, biding their time and waiting to become indentured with the hope of realising their racing dream.



Taylor Johnstone rides her 1st winner on Dark Wanderer at Launceston - 6 October 2021

“
 ...it's
 why
 we
 race
 ”

A message from Tasracing, on behalf of over 5,000 Tasmanians employed directly and indirectly by racing.

itswhywerace.com.au



CELEBRATING THOSE WHO
**DARE
 TO
 DREAM**

GALLERY
 FROM THE THOROUGHBRED
awards

The annual Thoroughbred Racing Awards & Hall of Fame Dinner brings together the elite of the Tasmanian thoroughbred industry to recognise our top breeders, trainers, jockeys, horses and industry contributors.

Each year the Hall of Fame inducts notable retired horses, associates, trainers and breeders, to immortalise their contributions to Tasmanian racing.

Tasracing congratulates all award winners and Hall of Fame inductees. We also acknowledge all our generous sponsors.

tasracing



it starts with a dream
SEE YOU AT THE 2022 SALE?



MAGIC MILLIONS
TASMANIAN YEARLING SALE
Quercus Park, Carrick

www.magicmillions.com.au

21 ^{NOW}
FEB 2021

HORSE OF THE YEAR – *Newhart*



HORSE OF THE YEAR AWARD WINNERS

gallery

CONTENDERS

Newhart
by FIGHTING SUN from JESTING

~

Summary: 15-8:5:0
Prizemoney: \$316,400
Trainer: Barry Campbell

Still A Star
by TORONADO (IRE) from LITA

~

Summary: 17-9:6:1
Prizemoney: \$691,490
Trainer: Bill Ryan

Turk Warrior
by OUTREACH from EHOR

~

Summary: 6-6:0:0
Prizemoney: \$295,970
Trainer: Glenn Stevenson

2YO OF THE YEAR – *Turk Warrior*



3YO OF THE YEAR – *Swoop Dog*



HORSE OF THE YEAR AWARD WINNERS

gallery

CONTENDERS

Turk Warrior
by *OUTREACH* from
EHOR

~

Summary: 6–6:0:0
Prizemoney: \$295,970
Trainer: Glenn Stevenson

Alpine Wolf
by *ALPINE EAGLE* from
COPPER DANCER

~

Summary: 2–2:0:0
Prizemoney: \$25,938
Trainer: Barry Campbell

Miss Charlie Brown
by *MYBOYCHARLIE (IRE)*
from *RED FEVER*

~

Summary: 5–2:1:0
Prizemoney: \$61,575
Trainer: Adam Trinder

CONTENDERS

Swoop Dog
by *HUSSON (ARG)* from
SWOOPER

~

Summary: 7–3:1:2
Prizemoney: \$179,560
Trainer: John Blacker

Hela
by *NIGHT OF THUNDER (IRE)*
from *SMOOTH RETURN*

~

Summary: 9–7:0:0
Prizemoney: \$173,543
Trainer: Scott Brunton

War Correspondent
by *TIME FOR WAR* from
LADY WRITER

~

Summary: 10–5:4:0
Prizemoney: \$210,175
Trainer: Glenn Stevenson



INDUSTRY PARTICIPANT AWARD WINNERS

gallery

Scott Brunton
~
2021 Tasmanian
Leading Trainer

David Pires
~
2021 Tasmanian
Leading Jockey

Codi Jordan
~
2021 Tasmanian
Leading Apprentice

Erica Byrne-Burke
~
2021 Tasmanian
Dux Apprentice

Mandy Gunn
~
2021 ROAT
Leading Owner

Codi Jordan
~
2021 Tasracing TV On-
Camera Performance Award

Ross & Glenda Jones
~
2021 TAN Recognition
Award

More than \$1.5 MILLION in prizemoney & bonuses!



BREEDER AWARD WINNERS

gallery

Wordsmith
~
2021 Leading
Tasmanian based
Juvenile Sire

Wordsmith
~
2021 Leading
Tasmanian based
Sire

Mystic Journey
~
2021 Leading
Tasmanian based
Racemare or Filly

Yarra Bank
~
2021 Leading
Tasmanian
Broodmare

LOOK FOR THE LOGO | SHARE THE REWARDS



TASBRED THOROUGHBRED BREEDING INCENTIVE SCHEME

Visit tasracingcorporate.com.au for full details



HALL OF FAME INDUCTEES

gallery

Michael Trinder
TRAINER INDUCTEE

Kats Clause
HORSE INDUCTEE

Kevin Dodge
JOCKEY INDUCTEE

Rod Thirkell-Johnson
ASSOCIATE INDUCTEE

Andrias
HORSE INDUCTEE

Gee Gees Blackflash
UPGRADED TO LEGEND STATUS

Geegees Blackflash raced 69 times for 22 wins, 17 seconds and 10 thirds.

He never raced outside Tasmania and he finished his career with almost \$1.2 million in prize money.

He won on all types of track surfaces and won over distances from 1100m to 2400m.

Eight different jockeys won aboard Geegees Blackflash but it was Victorian Peter Mertens who had the most success winning eight times and was aboard in many of his major wins. Siggie Carr had three wins on the champ and rode him to victory in his second Hobart Cup.

Geegees Blackflash, a legend of Tasmanian racing is now a legend in the Tasmanian Racing Hall of Fame.



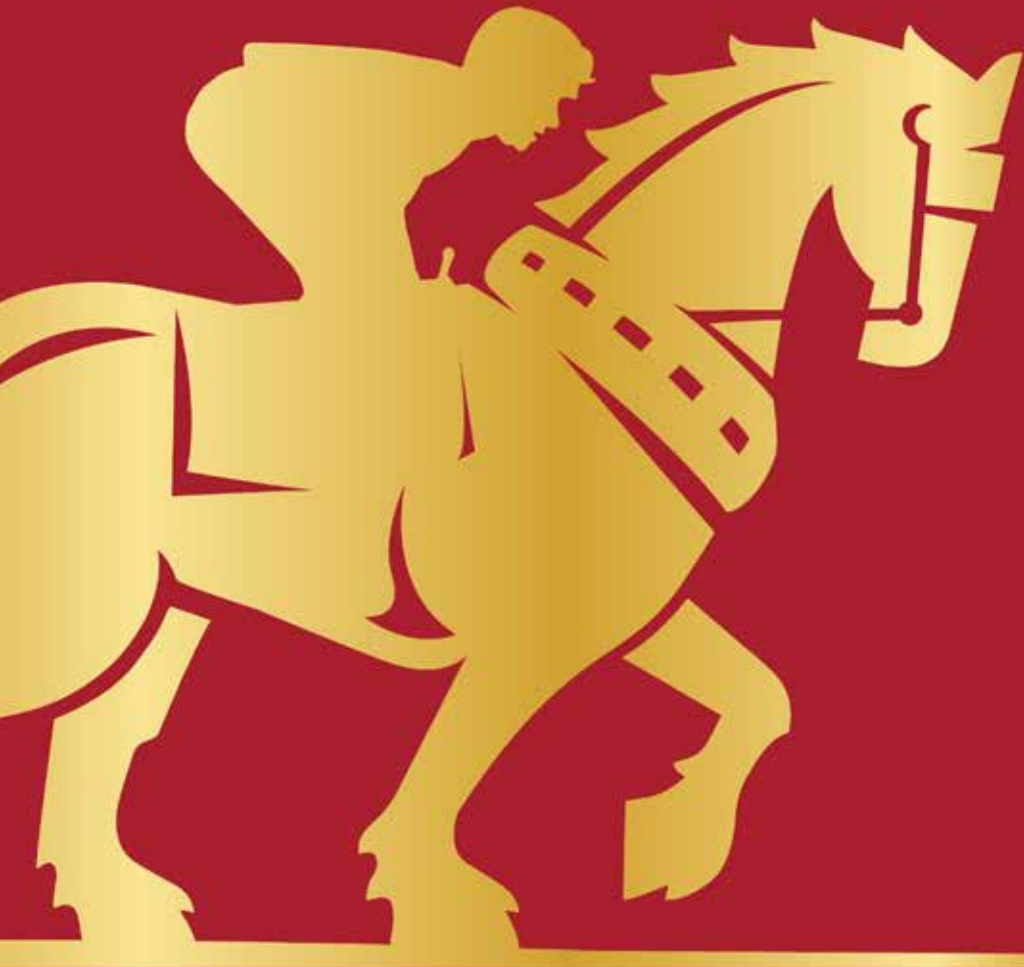
AWARD NIGHT SOCIAL

gallery



AWARD NIGHT SOCIAL

gallery



CARLTON DRAUGHT

18+ FOR PEOPLE OVER THE AGE OF 18 ONLY



If you're not at a Young Racing Tasmania event, the party has started without you!

Trackside Style, Exceptional food, premium beverages + exclusive entertainment.
YRT is the only way to soak up the glamour of the Sport of Kings.



Racing



Fashion



Food + drink



Race tips



Friends

Stay up to date: [@youngracingtas](#)



OUR MATE DUNCAN

Editorial by Lana Castle |

Duncan, who raced as Goodbye Lonesome, retired at seven years of age from a solid racing career in April 2020. Soon after, he was rehomed to his part owner Miranda Merlo who already had a wonderful bond with Duncan. Miranda was in the gelding's life from the very beginning, even being there during his birth. The pair shared many moments together over the following years during his training with Southern Tasmanian Thoroughbred Trainer Royston Carr. Miranda let her family, some of which were also Duncan's co-owners, know that upon his retirement she wanted to take him home.

Once retired, Duncan enjoyed some down time relaxing in his new home and being his very social self. Miranda confessed that Duncan is a true herd horse and needs to be with other horses or at least have some buddies close by that he can socialise with. After Duncan had some time to adjust to a less active lifestyle, Miranda made the decision to begin re-educating him at home. This started out slowly with Miranda eventually taking the relaxed gelding for small rides at their home.

Duncan was one of the first approved horses to enter Tasracing's Off the Track Subsidised Lessons Program. The Subsidised Lessons Program is an initiative to support retired racehorses as they transition from the racing industry into the community. The Tasracing Approved Coaches provide tailored support across a range of areas including horse care and husbandry, nutrition, behaviour, groundwork and ridden components. Duncan and Miranda started lessons with Approved Coach, Sue McDermott, in January 2021.

Sue recalled Duncan's first lesson noting "He took on every challenge in his stride. Like the majority of Off the Track Thoroughbreds and Standardbreds, Duncan showed a great temperament and willingness to learn. He was very trainable and progressed every lesson."

Miranda was pleased with the lesson structure stating "The lessons were focused on Duncan as a unique individual. Sue worked on the things Duncan or I needed help with such as balance and staying straight, especially while cantering. Miranda also learned how to best work with Duncan, what to expect of him, and how to best evolve the new partnership. The team excelled and were the first to complete their allocated vouchers. Miranda advised that "The lessons were enjoyable and very worthwhile."

Duncan is currently continuing his training with Miranda at home. Miranda is looking forward to taking the basic dressage skills Duncan gained with Sue and expanding them. She is also interested in adding Show Jumping to the gelding's training to pursue a new career in Eventing.

When asked about the future Miranda was pleased to say that Duncan was in his forever home with her family, she is even looking to Duncan to help build her daughter's confidence in riding with his calm, quiet and kind nature.

Duncan is a fantastic example of the versatility and trainability of Off the Track horses, and we wish him all the best in his new career.



Retiring your horse

DON'T FORGET to lodge your notification form!

Notification Forms

Under the Australian Rules of Racing, a notification form must be lodged when a decision has been made to retire a horse or to not commence racing a horse (AR 51) or upon the death of a horse (AR 52). Penalties may apply if failing to comply with notification obligations under the rules.

Notification forms for retirement of horses should be completed

Named horse within 1 month of the decision to retire the horse from racing or within 24 hours of the horse's death.

Unnamed horse within 1 month of the decision to not commence racing the horse, or within 24 hours of the horse's death.

Completed Forms to be lodged with RA:

- Online at www.myhorseracing.horse
- In paper form by posting to Racing Australia Service Centre, Level 1, 400 Epsom Road, Flemington VIC 3031.
- Email (subject: Retired Racehorse) to customerservice@racingaustralia.horse.

REHOMING A RETIRED THOROUGHBRED

If you rehome your retired Thoroughbred, please encourage the new owners to explore opportunities for support through the OTT program.

Subsidised Lessons Program

Tailored support across a range of areas including horse care and husbandry, nutrition, behaviour, groundwork and ridden components.

Hygain Nutritional Support

Support for new owners to better manage and understand the horse's transition from a full race feeding program into a new regime.

For more information, please visit offthetracktas.com.au. Alternatively, you can contact the Off the Track Co-ordinator, Lana Castle, by telephone on 0448 371 951 or by email at offthetrack@tasracing.com.au



SUBSCRIBE TO **FORMPLUS PRO**

The ultimate Tassie Formguide



CREATE A FREE FORMPLUS PRO ACCOUNT AND ACCESS:

- FORMPLUS PRO Form Guides, featuring rated markets, recommendations, speedmaps and more.
- TasracingTV Live Racing
- Additional race replay camera angles and photo finish images.
- Black Book with note taking service, linked with an alerts system, so you never miss a tip again.

 tasracing.com.au/signup

GAMBLE RESPONSIBLY - GAMBLING HELPLINE: 1800 858 858.

LIVE HOSTED RACING



tasracing.com.au/tasracingtv

 **tasracingTV**

GAMBLE RESPONSIBLY - GAMBLING HELP: 1800 858 858

PROGRAMME

information

44-45 Summer Feature Races

46-48 Feature Race
Conditions

49 King Island Racing

50 MM Race Conditions

52-63 Programme Detail

Programme Grid &
Barrier Trial Dates -
Inside back cover



TASMANIAN SUMMER racing



FEATURE RACES

DECEMBER

1 DECEMBER 2021

\$100,000 3YO Cup
TTC | 1200M | SW&P

\$125,000 LISTED Newmarket Handicap
TTC | 1200M | QLTY | HCP

3 DECEMBER 2021

\$30,000 Ladbrokes Golden Mile
DRC | 1650M | OPEN | HCP

8 DECEMBER 2021

\$30,000 Alfa Bowl
TTC | 1100M | 2YO | SW

15 DECEMBER 2021

\$50,000 3YO Trophy
TTC | 1400M | 3YO | SW

\$100,000 LISTED Conquering Stakes
TTC | 1400M | OPEN | WFA

22 DECEMBER 2021

\$50,000 Sheffield Cup
DRC | 1650M | OPEN | HCP

29 DECEMBER 2021

\$30,000 Alexandra Plate
TRC | 1100M | 2YO | SW

\$30,000 Winzenburg Handicap
TRC | 1100M | QLTY | HCP

JANUARY

5 JANUARY 2022

\$100,000 Ladbrokes Devonport Cup
DRC | 1880M | OPEN | HCP

7 JANUARY 2022

\$100,000 LISTED Tasmanian Guineas
TRC | 1600M | 3YO | SW

\$30,000 Brighton Cup
TRC | 2100M | OPEN | QLTY

\$100,000 LISTED Tasmanian Stakes
TRC | 1600M | OPEN | WFA

23 JANUARY 2022

\$100,000 LISTED Elwick Stakes
TRC | 1100M | 2YO | SW

\$50,000 Thousand Guineas
TRC | 1600M | 3YO F | SW

\$50,000 Lady Lynette
TRC | 1100M | F&M | SW&P

\$75,000 Summer Cup
TRC | 2200M | OPEN | WFA

26 JANUARY 2022

\$100,000 LISTED Launceston Guineas
TTC | 2100M | 3YO | SW

\$50,000 Ladbrokes Stakes
TTC | 1200M | OPEN | WFA

FEBRUARY

6 FEBRUARY 2022

\$150,000 LISTED Gold Sovereign
TTC | 1200M | 2YO | SW

\$30,000 Sydeston Cup
TTC | 2100M | OPEN | HCP

11 FEBRUARY 2022

\$100,000 LISTED Strutt Stakes
TRC | 2100M | 3YO F | SW

\$150,000 LISTED Tasmanian Derby
TRC | 2200M | 3YO | SW

\$150,000 GROUP 3 Bow Mistress
TRC | 1200M | F&M | WFA

13 FEBRUARY 2022

\$100,000 LISTED Thomas Lyons
TRC | 1400M | OPEN | WFA

\$250,000 GROUP 3 Ladbrokes Hobart Cup
TRC | 2400M | OPEN | HCP

20 FEBRUARY 2022

\$150,000 LISTED Tasmanian Oaks
TTC | 2100M | 3YO F | SW

\$75,000 2YO Magic Millions
TTC | 1200M | 2YO | SW

\$65,000 3YO/4YO Magic Millions
TTC | 1400M | 3YO/4YO | SW

23 FEBRUARY 2022

\$75,000 3YO Classic
TTC | 1200M | 3YO | SW&P

\$50,000 Royal Rambo
TTC | 1200M | OPEN | QLTY

\$100,000 LISTED Mowbray Stakes
TTC | 1600M | OPEN | WFA

\$150,000 GROUP 3 Vamos Stakes
TTC | 1400M | F&M | WFA

\$250,000 GROUP 3 Ladbrokes Launceston Cup
TTC | 2400M | OPEN | HCP

TASMANIAN SUMMER racing



FEATURE RACE CONDITIONS

FEATURE RACES [Alphabetical order]	CONDITIONS	NOMINATIONS GST incl	FINAL ACCEPTANCE GST incl	SCRATCHING FEE GST incl	BALLOT EXEMPT RACE	PENALTIES
3YO CUP	SW&P	\$220	\$1,000	\$500		■
3YO TROPHY	SW			\$220		
3YO CLASSIC	SW&P			\$220		■
ALEXANDRA PLATE	SW			\$220		
ALFA BOWL	SW			\$220		
BOW MISTRESS	WFA	\$330	\$1,500	\$750		
BRIGHTON CUP	QLTY			\$220	■	
CONQUERING	WFA	\$220	\$1,000	\$500		
DEVONPORT CUP	HCP	\$220	\$1,000	\$500		
ELWICK STAKES	SW	\$220	\$1,000	\$500		
GOLDEN MILE	HCP			\$220	■	
GOLD SOVEREIGN	SW	\$330	\$1,500	\$750		
LADBROKES HOBART CUP	HCP	\$440	\$2,500	\$1,250		
LADBROKES STAKES	WFA			\$220		
LADY LYNETTE	SW&P			\$220		■
LADBROKES LAUNCESTON CUP	HCP	\$440	\$2,500	\$1,250		
LAUNCESTON GUINEAS	SW	\$220	\$1,000	\$500		
MAGIC MILLIONS 2YO CLASSIC	SW	<i>Refer MM Race Conditions Page 50</i>				

FEATURE RACE CONDITIONS OF ENTRY:

Horses declared to be emergencies and which fail to gain a start, or horses which are eliminated under the balloting conditions are still liable for the nomination fees and only the declaration of acceptance fee will be refunded.

Acceptance fees must be paid prior to the horse starting. However, Tasracing may in its absolute discretion eliminate any horse or horses from this race and/or exclude any horse or horses from the operation of the preceding elimination conditions.

Tasracing reserves the right from time to time to alter the date of running, to make any alteration or modification in this race, to cancel the meeting or any portion thereof, to alter time for taking entries or acceptances, also the right to reject at any time any entry submitted to or for them.

FEATURE RACES

[Alphabetical order]

FEATURE RACES [Alphabetical order]	CONDITIONS	NOMINATIONS GST incl	FINAL ACCEPTANCE GST incl	SCRATCHING FEE GST incl	BALLOT EXEMPT RACE	PENALTIES
MAGIC MILLIONS 3YO/4YO CLASSIC	SW	<i>Refer MM Race Conditions Page 50</i>				
MOWBRAY STAKES	WFA	\$220	\$1,000	\$500		
NEWMARKET HANDICAP	QLTY	\$220	\$1,250	\$625		
ROYAL RAMBO	QLTY			\$220		
SHEFFIELD CUP	HCP			\$220		■
STRUTT STAKES	SW	\$220	\$1,000	\$500		
SUMMER CUP	WFA			\$220		■
SYDESTON CUP	HCP			\$220		■
THOMAS LYONS	WFA	\$220	\$1,000	\$500		
TASMANIAN DERBY	SW	\$330	\$1,500	\$750		■
TASMANIAN GUINEAS	SW	\$220	\$1,000	\$500		
TASMANIAN OAKS	SW	\$330	\$1,500	\$750		
TASMANIAN STAKES	WFA	\$220	\$1,000	\$500		
TASMANIAN ST LEGER	QLTY			\$220		
THOUSAND GUINEAS	SW			\$220		
VAMOS	WFA	\$330	\$1,500	\$750		
WINZENBURG HANDICAP	QLTY			\$220		

PENALTIES:

The winner of a race of the advertised value to the winner of \$60,000 or more, 3kg, and of two or more such races, 4kg. The winner of a race of the advertised value to the winner of \$30,000 or more, 2kg, and of two or more such races 2.5kg. The winner of a race of the advertised value to the winner of \$15,000 or more, 1kg, and of two or more such races 1.5kg. The winner of two or more races of the advertised value to the winner of \$7,500 or more, 1kg. Penalties not to be cumulative (In applying this rule where reference is made to prize money no account shall be taken of any bonuses won by a horse).

TASMANIAN SUMMER *racing*

BALLOTING CONDITIONS & EXEMPTIONS

BALLOT CONDITIONS: Refer Local Rule 11.1

BALLOT EXEMPTIONS: [Alphabetical Order]

BRIGHTON CUP The winner of this race to be exempt from ballot for the 2022 Ladbrokes Hobart Cup to be run on Sunday 13 February 2022.

DEVONPORT CUP The winners of the 2021 Ladbrokes Golden Mile, 2021 Sheffield Cup, and the 2022 Longford Cup shall be exempt from ballot.

GOLDEN MILE The winner of this race to be exempt from ballot for the 2022 Ladbrokes Devonport Cup to be run on Wednesday 5 January 2022.

HOBART CUP The winners of the 2022 Brighton Cup and 2022 Summer Cup will be exempt from ballot for the 2022 Ladbrokes Hobart Cup.

LAUNCESTON CUP The winner of the 2022 Tasmanian Derby and the 2022 Sydeston Night Cup are eligible for ballot free entry. 3YO's may be allocated 52kg, in line with Age Allowance.

LAUNCESTON GUINEAS The winner of this race to be exempt from ballot for the 2022 Tasmanian Derby to be run on Friday 11 February 2022.

LONGFORD CUP The winner of this race to be exempt from ballot for the 2022 Ladbrokes Devonport Cup to be run on Wednesday 5 January 2022.

SUMMER CUP The winner of this race to be exempt from ballot for the 2022 Ladbrokes Hobart Cup to be run on Sunday 13 February 2022.

SHEFFIELD CUP The winner of this race to be exempt from ballot for the 2022 Ladbrokes Devonport Cup to be run on Wednesday 5 January 2022.

SYDESTON CUP The winner of the 2022 Sydeston Cup will be exempt from ballot for the 2022 Ladbrokes Launceston Cup.

TASMANIAN DERBY The winner of this race to be exempt from ballot for the 2022 Ladbrokes Launceston Cup to be run on Wednesday 24 February 2022.

7 action packed race days



GET TRACKSIDE KING ISLAND RACING

BOXING DAY
Sunday 26 December 2021

KING ISLAND CUP - LADIES DAY
Saturday 22 January 2022

KING ISLAND BEEF DAY
Sunday 2 January 2022

KING ISLAND RECREATIONAL DAY
Saturday 29 January 2022

MARITIME DAY
Saturday 8 January 2022

SOUTHERN AIRLINES FLY-IN DAY
Saturday 5 February 2022

[Official Trial Day - Saturday 18 December 2021]

For more information contact: Secretary; Heather Archer
Email: kingislandracingclub@gmail.com or hgarcher@skymesh.com.au

MAGIC MILLIONS

RACE CONDITIONS

RACE CONDITIONS:

Magic Millions races are restricted to horses which were offered through a Magic Millions Yearling Sale and nominated to its Race Series. Magic Millions Promotions Pty Ltd reserves the right to reject any nomination or extend the time to lodge such nominations for the Magic Millions Race Series and to change the venue and date of any race in the Magic Millions Race Series in its absolute discretion. Tasracing may in its absolute discretion eliminate any horse or horses from this race and/or exclude any horse or horses from the operation of the preceding elimination conditions. Tasracing reserves the right from time to time to alter the date of running, to make any alteration or modification in this race, to cancel the meeting or any portion thereof, to alter time for taking entries or acceptances, also the right to reject at any time any entry submitted to or for them. If the Race Series nomination was not paid at the time of the yearling sale, a late race series entry fee of \$1,430 (inc GST) will apply for eligible horses, payable to Tasracing. NB: the option of a late race series nomination is not available for horses of four years of age. Should less than a capacity field contest a Magic Millions race, all unused prizemoney for that race will be added to the respective race winner's prizemoney earnings.

Late race series nomination fee for eligible horses: \$1,430 (GST inclusive).
Must be paid by noon Wednesday 16 February 2022 to Tasracing refer above.

Scratching Fee: \$220 (GST inclusive) Scratching Fee applicable unless a Veterinary Certificate is tendered.

Balloting Conditions: Refer Local Rule 11.1(e)

RACING WOMENS \$10,000 BONUS CONDITIONS

To be eligible for the MM/Tasracing Racing Women's Bonus in 2022 the two-year-old horse must be:

- An eligible graduate of a 2021 Magic Millions Yearling Sale and nominated to the Magic Millions Race Series (Full Series or Tasmanian Series);
- 100% owned or leased by females; and
- The horse must race in 100% female ownership (or lease) at all times prior to and including the Magic Millions 2YO Classic on Sunday 20 February 2022. The ownership (or lease) must remain unchanged from the two-year-old's first official race start until the time the Bonus is awarded.
- The horse must officially finish the race to be eligible to receive the Bonus. In the event of a dead heat between more than one eligible horse, the Bonus will be divided equally.

Should an eligible horse be subject to pre or post-race drug testing by the Stewards, the Bonus will not be distributed until the result of the swab/s have cleared in accordance with the Australian Rules of Racing. *NB: Should there be no Bonus eligible horses contest the Magic Millions 2YO Classic at Launceston on Sunday 20 February 2022, the Bonus will not be distributed.*

SALES CREDIT VOUCHER CONDITIONS: **MM VOUCHER**

The managing owner of a horse that wins a designated MM voucher race, will receive a \$5,000 sales credit voucher to spend at the Magic Millions Tasmanian Yearling Sale on 21 February 2022. The voucher can only be redeemed at this sale and is not transferrable. If the purchase of a lot(s) is higher than the voucher redemption value, it is the responsibility of the voucher holder to ensure they have arranged settlement terms approved by Magic Millions in advance of bidding.



**\$10,000
RACING
WOMEN'S
BONUS**

\$75,000
TOTAL RACE PRIZE MONEY

\$10,000*
BONUS PLUS \$500 TROPHY

SUNDAY

20 FEB

**\$10K* BONUS TO THE FIRST ALL-FEMALE OWNED OR
LEASED HORSE IN FINISHING ORDER
IN THE 2022 MAGIC MILLIONS 2YO CLASSIC**



WEDNESDAY 1 DECEMBER 2021

TASMANIAN TURF CLUB

LAUNCESTON - TURF - NIGHT - P

NOMS close 12 noon Thursday, 25 November 2021
HCP declared by 5pm Friday, 26 November 2021
ACC close 9am Monday, 29 November 2021
RIDERS close 12 noon Monday, 29 November 2021

1 3YO CUP

For 3YO. Apprentices cannot claim
1200m - Set Weights & Penalties **CONDITIONS**
Of \$100,000 - \$60,000; \$18,000; \$9,000; \$4,500;
\$2,500; \$2,000; \$2,000; \$2,000

2 3YO & Upwards Maiden **TASBRED**

1200m - Set Weights
Of \$21,000 - \$13,125; \$4,200; \$2,100; \$945;
\$420; \$210

3 3YO & Upwards Maiden **TASBRED**

1400m - Set Weights
Of \$21,000 - \$13,125; \$4,200; \$2,100; \$945;
\$420; \$210

4 Maiden/Class 1

1600m - Set Weights
Of \$21,000 - \$13,125; \$4,200; \$2,100; \$945;
\$420; \$210

5 Class 1 Handicap

1200m
Of \$21,000 - \$13,125; \$4,200; \$2,100; \$945;
\$420; \$210

6 Benchmark 62 Handicap

2100m
Of \$21,000 - \$13,125; \$4,200; \$2,100; \$945;
\$420; \$210

7 Benchmark 68 Handicap

1400m
Of \$21,000 - \$13,125; \$4,200; \$2,100; \$945;
\$420; \$210

8 NEWMARKET HANDICAP

1200m - Quality Handicap
Listed **CONDITIONS** **LISTED**
Apprentices cannot claim
Of \$125,000 - \$75,000; \$22,500; \$11,250;
\$5,625; \$3,125; \$2,500; \$2,500; \$2,500

FRIDAY 3 DECEMBER 2021

DEVONPORT RACING CLUB

DEVONPORT - ALL WEATHER - TWILIGHT - C

NOMS close 12 noon Monday, 29 November 2021
HCP declared by 5pm Tuesday, 30 November 2021
ACC close 9am Wednesday, 1 December 2021
RIDERS close 12 noon Wednesday, 1 December 2021

1 3YO & Upwards Maiden **TASBRED**

1009m - Set Weights
Of \$21,000 - \$13,125; \$4,200; \$2,100; \$945;
\$420; \$210

2 Class 1 Handicap

1150m
Of \$21,000 - \$13,125; \$4,200; \$2,100; \$945;
\$420; \$210

3 Class 1 Handicap

1350m
Of \$21,000 - \$13,125; \$4,200; \$2,100; \$945;
\$420; \$210

4 Benchmark 62 Handicap

1350m
Of \$21,000 - \$13,125; \$4,200; \$2,100; \$945;
\$420; \$210

5 Benchmark 62 Handicap

1650m
Of \$21,000 - \$13,125; \$4,200; \$2,100; \$945;
\$420; \$210

6 Benchmark 68 Handicap

1150m
Of \$21,000 - \$13,125; \$4,200; \$2,100; \$945;
\$420; \$210

7 GOLDEN MILE **CONDITIONS**

Apprentices cannot claim
1650m - Open Handicap
Of \$30,000 - \$18,150; \$5,400; \$2,700; \$1,350;
\$600; \$600; \$600; \$600

WEDNESDAY 8 DECEMBER 2021

TASMANIAN TURF CLUB

LAUNCESTON - TURF - NIGHT - C

NOMS close 12 noon Thursday, 2 December 2021
HCP declared by 5pm Friday, 3 December 2021
ACC close 9am Monday, 6 December 2021
RIDERS close 12 noon Monday, 6 December 2021

1 ALFA BOWL **CONDITIONS**

For 2YO. Apprentices cannot claim
1100m - Set Weights
Of \$30,000 - \$18,150; \$5,400; \$2,700; \$1,350;
\$600; \$600; \$600; \$600

2 3YO & Upwards Maiden **TASBRED**

1200m - Set Weights
Of \$21,000 - \$13,125; \$4,200; \$2,100; \$945;
\$420; \$210

3 3YO & Upwards Maiden

1400m - Set Weights
Of \$21,000 - \$13,125; \$4,200; \$2,100; \$945;
\$420; \$210

4 Maiden/Class 1

2100m - Set Weights
Of \$21,000 - \$13,125; \$4,200; \$2,100; \$945;
\$420; \$210

5 Class 1 Handicap

1400m
Of \$21,000 - \$13,125; \$4,200; \$2,100; \$945;
\$420; \$210

6 Benchmark 62 Handicap

1200m
Of \$21,000 - \$13,125; \$4,200; \$2,100; \$945;
\$420; \$210

7 Benchmark 68 Handicap

1600m
Of \$21,000 - \$13,125; \$4,200; \$2,100; \$945;
\$420; \$210

8 Benchmark 76 Handicap

1400m
Of \$23,000 - \$14,375; \$4,600; \$2,300; \$1,035;
\$460; \$230

WEDNESDAY 15 DECEMBER 2021

TASMANIAN TURF CLUB

LAUNCESTON - TURF - NIGHT - P

NOMS close 12 noon Thursday, 9 December 2021
HCP declared by 5pm Friday, 10 December 2021
ACC close 9am Monday, 13 December 2021
RIDERS close 12 noon Monday, 13 December 2021

1 3YO TROPHY **CONDITIONS**

For 3YO. Apprentices cannot claim
1400m - Set Weights
Of \$50,000 - \$30,250; \$9,000; \$4,500; \$2,250;
\$1,000; \$1,000; \$1,000; \$1,000

2 3YO & Upwards Maiden **TASBRED**

1200m - Set Weights
Of \$21,000 - \$13,125; \$4,200; \$2,100; \$945; \$420;
\$210

3 Class 1 Handicap

1200m
Of \$21,000 - \$13,125; \$4,200; \$2,100; \$945; \$420;
\$210

4 Class 1 Handicap

1600m
Of \$21,000 - \$13,125; \$4,200; \$2,100; \$945; \$420;
\$210

5 Benchmark 62 Handicap

1200m
Of \$21,000 - \$13,125; \$4,200; \$2,100; \$945; \$420;
\$210

6 Class 3 Handicap

1400m
Of \$23,000 - \$14,375; \$4,600; \$2,300; \$1,035;
\$460; \$230

7 Benchmark 76 Handicap

1200m
Of \$23,000 - \$14,375; \$4,600; \$2,300; \$1,035;
\$460; \$230

8 Benchmark 76 Handicap

2100m
Of \$23,000 - \$14,375; \$4,600; \$2,300; \$1,035;
\$460; \$230

9 CONQUERING WFA **CONDITIONS** **LISTED**

Apprentices cannot claim
1400m - Weight for Age
Of \$100,000 - \$60,000; \$18,000; \$9,000; \$4,500;
\$2,500; \$2,000; \$2,000; \$2,000;

SUNDAY 19 DECEMBER 2021**TASMANIAN RACING CLUB****HOBART - TURF - DAY - C**

NOMS close 12 noon Monday, 13 December 2021
 HCP declared by 5pm Tuesday, 14 December 2021
 ACC close 9am Wednesday, 15 December 2021
 RIDERS close 12 noon Wednesday, 15 December 2021

- 1 3YO Maiden** **TASBRED**
1100m - Set Weights
Of \$22,500 - \$14,063; \$4,500; \$2,250; \$1,013;
\$450; \$225
- 2 3YO & Upwards Maiden**
1100m - Set Weights
Of \$21,000 - \$13,125; \$4,200; \$2,100; \$945;
\$420; \$210
- 3 3YO & Upwards Maiden** **TASBRED**
1600m - Set Weights
Of \$21,000 - \$13,125; \$4,200; \$2,100; \$945;
\$420; \$210
- 4 Class 1 Handicap**
1100m
Of \$21,000 - \$13,125; \$4,200; \$2,100; \$945;
\$420; \$210
- 5 Class 1 Handicap**
1400m
Of \$21,000 - \$13,125; \$4,200; \$2,100; \$945;
\$420; \$210
- 6 Benchmark 62 Handicap**
1600m
Of \$21,000 - \$13,125; \$4,200; \$2,100; \$945;
\$420; \$210
- 7 Benchmark 68 Handicap**
1400m
Of \$21,000 - \$13,125; \$4,200; \$2,100; \$945;
\$420; \$210

WEDNESDAY 22 DECEMBER 2021**DEVONPORT RACING CLUB****DEVONPORT - ALL WEATHER - DAY - P**

NOMS close 12 noon Thursday, 16 December 2021
 HCP declared by 5pm Friday, 17 December 2021
 ACC close 9am Monday, 20 December 2021
 RIDERS close 12 noon Monday, 20 December 2021

- 1 3YO & Upwards Maiden**
1009m - Set Weights
Of \$21,000 - \$13,125; \$4,200; \$2,100; \$945;
\$420; \$210
- 2 3YO & Upwards Maiden** **TASBRED**
1350m - Set Weights
Of \$21,000 - \$13,125; \$4,200; \$2,100; \$945;
\$420; \$210
- 3 Maiden/Class 1**
1880m - Set Weights
Of \$21,000 - \$13,125; \$4,200; \$2,100; \$945;
\$420; \$210
- 4 Benchmark 62 Handicap**
1150m
Of \$21,000 - \$13,125; \$4,200; \$2,100; \$945;
\$420; \$210
- 5 Benchmark 62 Handicap**
1350m
Of \$21,000 - \$13,125; \$4,200; \$2,100; \$945;
\$420; \$210
- 6 Benchmark 68 Handicap**
1880m
Of \$21,000 - \$13,125; \$4,200; \$2,100; \$945;
\$420; \$210
- 7 Benchmark 76 Handicap**
1009m
Of \$23,000 - \$14,375; \$4,600; \$2,300; \$1,035;
\$460; \$230
- 8 SHEFFIELD CUP** **CONDITIONS**
Apprentices cannot claim
1650m - Open Handicap
Of \$50,000 - \$30,250; \$9,000; \$4,500; \$2,250;
\$1,000; \$1,000; \$1,000; \$1,000

WEDNESDAY 29 DECEMBER 2021**TASMANIAN RACING CLUB****HOBART - TURF - DAY - C**

NOMS close 12 noon Thursday, 23 December 2021
 HCP declared by 5pm Friday, 24 December 2021
 ACC close 9am Monday, 27 December 2021
 RIDERS close 12 noon Monday, 27 December 2021

- 1 ALEXANDRA PLATE** **CONDITIONS**
For 2YO. Apprentices cannot claim
1100m - Set Weights
Of \$30,000 - \$18,150; \$5,400; \$2,700;
\$1,350; \$600; \$600; \$600; \$600
- 2 3YO & Upwards Maiden** **TASBRED**
1200m - Set Weights
Of \$21,000 - \$13,125; \$4,200; \$2,100;
\$945; \$420; \$210
- 3 3YO & Upwards Maiden** **TASBRED**
1400m - Set Weights
Of \$21,000 - \$13,125; \$4,200; \$2,100;
\$945; \$420; \$210
- 4 Maiden/Class 1**
1600m - Set Weights
Of \$21,000 - \$13,125; \$4,200; \$2,100;
\$945; \$420; \$210
- 5 Class 1 Handicap**
1200m
Of \$21,000 - \$13,125; \$4,200; \$2,100;
\$945; \$420; \$210
- 6 Benchmark 62 Handicap**
2100m
Of \$21,000 - \$13,125; \$4,200; \$2,100;
\$945; \$420; \$210
- 7 Benchmark 68 Handicap**
1200m
Of \$21,000 - \$13,125; \$4,200; \$2,100;
\$945; \$420; \$210
- 8 Benchmark 68 Handicap**
1600m
Of \$23,000 - \$14,375; \$4,600; \$2,300;
\$1,035; \$460; \$230
- 9 WINZENBURG HANDICAP** **CONDITIONS**
Apprentices cannot claim
1100m - Quality Handicap
Of \$30,000 - \$18,150; \$5,400; \$2,700;
\$1,350; \$600; \$600; \$600; \$600

SATURDAY 1 JANUARY 2022**TASMANIAN TURF CLUB****LONGFORD - TURF - DAY - C**

NOMS close 12 noon Monday, 27 December 2021
 HCP declared by 5pm Tuesday, 28 December 2021
 ACC close 9am Wednesday, 29 December 2021
 RIDERS close 12 noon Wednesday, 29 December 2021

- 1 3YO & Upwards Maiden**
1400m - Set Weights
Of \$12,000 - \$7,500; \$2,400; \$1,200;
\$540; \$240; \$120
- 2 3YO & Upwards Maiden**
1800m - Set Weights
Of \$12,000 - \$7,500; \$2,400; \$1,200;
\$540; \$240; \$120
- 3 0-62 Rating**
1400m
Of \$12,000 - \$7,500; \$2,400; \$1,200;
\$540; \$240; \$120
- 4 Benchmark 62 Handicap**
1800m
Of \$12,000 - \$7,500; \$2,400; \$1,200;
\$540; \$240; \$120
- 5 Benchmark 66 Handicap**
1400m
Of \$12,000 - \$7,500; \$2,400; \$1,200;
\$540; \$240; \$120
- 6 Longford Cup**
1800m
Of \$25,000 - \$15,625; \$5,000; \$2,500;
\$1,125; \$500; \$250

WEDNESDAY 5 JANUARY 2022

DEVONPORT RACING CLUB

DEVONPORT - ALL WEATHER - DAY - P

NOMS close 12 noon Thursday, 30 December 2021
HCP declared by 5pm Friday, 31 December 2021
ACC close 9am Monday, 3 January 2022
RIDERS close 12 noon Monday, 3 January 2022

- 1 **3YO & Upwards Maiden** **TASBRED**
1009m - Set Weights
Of \$23,000 - \$14,375; \$4,600; \$2,300; \$1,035;
\$460; \$230
- 2 **3YO & Upwards Maiden** **TASBRED**
1350m - Set Weights
Of \$23,000 - \$14,375; \$4,600; \$2,300; \$1,035;
\$460; \$230
- 3 **Maiden/Class 1** **TASBRED**
1880m - Set Weights
Of \$23,000 - \$14,375; \$4,600; \$2,300; \$1,035;
\$460; \$230
- 4 **Class 1 Handicap**
1350m
Of \$23,000 - \$14,375; \$4,600; \$2,300; \$1,035;
\$460; \$230
- 5 **Benchmark 62 Handicap**
1009m
Of \$23,000 - \$14,375; \$4,600; \$2,300; \$1,035;
\$460; \$230
- 6 **Benchmark 62 Handicap**
1650m
Of \$23,000 - \$14,375; \$4,600; \$2,300; \$1,035;
\$460; \$230
- 7 **Benchmark 68 Handicap**
1150m
Of \$23,000 - \$14,375; \$4,600; \$2,300; \$1,035;
\$460; \$230
- 8 **Benchmark 76 Handicap**
1350m
Of \$23,000 - \$14,375; \$4,600; \$2,300; \$1,035;
\$460; \$230
- 9 **DEVONPORT CUP** **CONDITIONS**
Apprentices cannot claim
1880m - Open Handicap
Of \$100,000 - \$60,000; \$18,000; \$9,000; \$4,500;
\$2,500; \$2,000; \$2,000; \$2,000

FRIDAY 7 JANUARY 2022

TASMANIAN RACING CLUB

HOBART - TURF - TWILIGHT - P

NOMS close 12 noon Monday, 3 January 2022
HCP declared by 5pm Tuesday, 4 January 2022
ACC close 9am Wednesday, 5 January 2022
RIDERS close 12 noon Wednesday, 5 January 2022

- 1 **TASMANIAN GUINEAS** **CONDITIONS**
For 3YO **LISTED**
Apprentices cannot claim
1600m - Set Weights
Of \$100,000 - \$60,000; \$18,000; \$9,000;
\$4,500; \$2,500; \$2,000; \$2,000; \$2,000
- 2 **2YO Maiden** **TASBRED**
1000m - Set Weights
Of \$22,500 - \$14,063; \$4,500; \$2,250;
\$1,013; \$450; \$225
- 3 **3YO & Upwards Maiden** **TASBRED**
1100m - Set Weights
Of \$21,000 - \$13,125; \$4,200; \$2,100; \$945;
\$420; \$210
- 4 **Maiden/Class 1**
1600m - Set Weights
Of \$21,000 - \$13,125; \$4,200; \$2,100; \$945;
\$420; \$210
- 5 **Class 1 Handicap**
1400m
Of \$21,000 - \$13,125; \$4,200; \$2,100; \$945;
\$420; \$210
- 6 **Benchmark 64 Handicap**
Fillies & Mares **MM VOUCHER**
1400m
Of \$21,000 - \$13,125; \$4,200; \$2,100; \$945;
\$420; \$210
- 7 **Class 3 Handicap**
1200m
Of \$23,000 - \$14,375; \$4,600; \$2,300;
\$1,035; \$460; \$230
- 8 **BRIGHTON CUP** **CONDITIONS**
Apprentices cannot claim
2100m - Quality Handicap
Of \$30,000 - \$18,150; \$5,400; \$2,700;
\$1,350; \$600; \$600; \$600; \$600
- 9 **TASMANIAN STAKES** **CONDITIONS**
Apprentices cannot claim
1600m - Weight for Age **LISTED**
Of \$100,000 - \$60,000; \$18,000; \$9,000;
\$4,500; \$2,500; \$2,000; \$2,000; \$2,000;

FRIDAY 14 JANUARY 2022

TASMANIAN TURF CLUB

LAUNCESTON - TURF - NIGHT - C

NOMS close 12 noon Monday, 10 January 2022
HCP declared by 5pm Tuesday, 11 January 2022
ACC close 9am Wednesday, 12 January 2022
RIDERS close 12 noon Wednesday, 12 January 2022

- 1 **3YO Maiden** **TASBRED**
1200m - Set Weights
Of \$22,500 - \$14,063; \$4,500; \$2,250;
\$1,013; \$450; \$225
- 2 **3YO & Upwards Maiden**
1400m - Set Weights
Of \$21,000 - \$13,125; \$4,200; \$2,100;
\$945; \$420; \$210
- 3 **Maiden/Class 1**
2100m - Set Weights **MM VOUCHER**
Of \$21,000 - \$13,125; \$4,200; \$2,100;
\$945; \$420; \$210
- 4 **Class 1 Handicap**
1200m
Of \$21,000 - \$13,125; \$4,200; \$2,100;
\$945; \$420; \$210
- 5 **Benchmark 62 Handicap**
1200m
Of \$21,000 - \$13,125; \$4,200; \$2,100;
\$945; \$420; \$210
- 6 **Benchmark 62 Handicap**
1600m
Of \$21,000 - \$13,125; \$4,200; \$2,100;
\$945; \$420; \$210
- 7 **Benchmark 68 Handicap**
1400m
Of \$21,000 - \$13,125; \$4,200; \$2,100;
\$945; \$420; \$210
- 8 **Benchmark 76 Handicap**
2100m
Of \$23,000 - \$14,375; \$4,600; \$2,300;
\$1,035; \$460; \$230
- 9 **Open Handicap**
1100m
Of \$25,000 - \$15,625; \$5,000; \$2,500;
\$1,125; \$500; \$250

WEDNESDAY 19 JANUARY 2022

TASMANIAN TURF CLUB

LAUNCESTON - TURF - NIGHT - C

NOMS close 12 noon Thursday, 13 January 2022
HCP declared by 5pm Friday, 14 January 2022
ACC close 9am Monday, 17 January 2022
RIDERS close 12 noon Monday, 17 January 2022

- 1 **3YO & Upwards Maiden** **TASBRED**
1200m - Set Weights
Of \$21,000 - \$13,125; \$4,200; \$2,100; \$945;
\$420; \$210
- 2 **3YO & Upwards Maiden** **TASBRED**
1600m - Set Weights
Of \$21,000 - \$13,125; \$4,200; \$2,100; \$945;
\$420; \$210
- 3 **Class 1 Handicap**
1600m
Of \$21,000 - \$13,125; \$4,200; \$2,100; \$945;
\$420; \$210
- 4 **0-62 Rating**
1100m
Of \$21,000 - \$13,125; \$4,200; \$2,100; \$945;
\$420; \$210
- 5 **Benchmark 62 Handicap**
1400m
Of \$21,000 - \$13,125; \$4,200; \$2,100; \$945;
\$420; \$210
- 6 **0-66 Rating**
2100m
Of \$21,000 - \$13,125; \$4,200; \$2,100; \$945;
\$420; \$210
- 7 **Benchmark 68 Handicap**
1200m **MM VOUCHER**
Of \$21,000 - \$13,125; \$4,200; \$2,100; \$945;
\$420; \$210
- 8 **Benchmark 76 Handicap**
1600m
Of \$23,000 - \$14,375; \$4,600; \$2,300; \$1,035;
\$460; \$230

SUNDAY 23 JANUARY 2022**TASMANIAN RACING CLUB****HOBART - TURF - DAY - P**

NOMS close 12 noon Monday, 17 January 2022
 HCP declared by 5pm Tuesday, 18 January 2022
 ACC close 9am Wednesday, 19 January 2022
 RIDERS close 12 noon Monday, 19 January 2022

- 1 ELWICK STAKES** **CONDITIONS** **LISTED**
 For 2YO. Apprentices cannot claim
 1100m - Set Weights
 Of \$100,000 - \$60,000; \$18,000; \$9,000; \$4,500;
 \$2,500; \$2,000; \$2,000; \$2,000
- 2 THOUSAND GUINEAS** **CONDITIONS**
 For 3YO Fillies. Apprentices cannot claim
 1600m - Set Weights
 Of \$50,000 - \$30,250; \$9,000; \$4,500; \$2,250;
 \$1,000; \$1,000; \$1,000; \$1,000
- 3 3YO & Upwards Maiden**
 1200m - Set Weights **MM VOUCHER**
 Of \$21,000 - \$13,125; \$4,200; \$2,100; \$945;
 \$420; \$210
- 4 3YO & Upwards Maiden** **TASBRED**
 1400m - Set Weights
 Of \$21,000 - \$13,125; \$4,200; \$2,100; \$945;
 \$420; \$210
- 5 Maiden/Class 1** **TASBRED**
 2100m - Set Weights
 Of \$21,000 - \$13,125; \$4,200; \$2,100; \$945;
 \$420; \$210
- 6 Class 1 Handicap**
 1400m
 Of \$21,000 - \$13,125; \$4,200; \$2,100; \$945;
 \$420; \$210
- 7 Benchmark 76 Handicap**
 1400m
 Of \$23,000 - \$14,375; \$4,600; \$2,300; \$1,035;
 \$460; \$230
- 8 LADY LYNETTE** **CONDITIONS**
 Fillies & Mares
 Apprentices cannot claim
 1100m - Set Weights & Penalties
 Of \$50,000 - \$30,250; \$9,000; \$4,500; \$2,250;
 \$1,000; \$1,000; \$1,000; \$1,000
- 9 SUMMER CUP** **CONDITIONS**
 Apprentices cannot claim
 2200m - Weight For Age
 Of \$75,000 - \$45,000; \$13,500; \$6,750; \$3,375;
 \$1,875; \$1,500; \$1,500; \$1,500;

WEDNESDAY 26 JANUARY 2022**TASMANIAN TURF CLUB****LAUNCESTON - TURF - NIGHT - P**

NOMS close 12 noon Thursday, 20 January 2022
 HCP declared by 5pm Friday, 21 January 2022
 ACC close 9am Monday, 24 January 2022
 RIDERS close 12 noon Monday, 24 January 2022

- 1 LAUNCESTON GUINEAS** **CONDITIONS**
 For 3YO. Apprentices cannot claim
 2100m - Set Weights **LISTED**
 Of \$100,000 - \$60,000; \$18,000; \$9,000; \$4,500;
 \$2,500; \$2,000; \$2,000; \$2,000
- 2 3YO & Upwards Maiden**
 1100m - Set Weights
 Of \$21,000 - \$13,125; \$4,200; \$2,100; \$945;
 \$420; \$210
- 3 Maiden/Class 1**
 1600m - Set Weights
 Of \$21,000 - \$13,125; \$4,200; \$2,100; \$945;
 \$420; \$210
- 4 Class 1 Handicap**
 1200m
 Of \$21,000 - \$13,125; \$4,200; \$2,100; \$945;
 \$420; \$210
- 5 Benchmark 62 Handicap**
 2100m
 Of \$21,000 - \$13,125; \$4,200; \$2,100; \$945;
 \$420; \$210
- 6 Class 3 Handicap**
 1100m **MM VOUCHER**
 Of \$23,000 - \$14,375; \$4,600; \$2,300; \$1,035;
 \$460; \$230
- 7 Class 3 Handicap**
 1400m
 Of \$23,000 - \$14,375; \$4,600; \$2,300; \$1,035;
 \$460; \$230
- 8 LADBROKES STAKES** **CONDITIONS**
 Apprentices cannot claim
 1200m - Weight for Age
 Of \$50,000 - \$30,250; \$9,000; \$4,500; \$2,250;
 \$1,000; \$1,000; \$1,000; \$1,000

SUNDAY 6 FEBRUARY 2022**TASMANIAN TURF CLUB****LAUNCESTON - TURF - DAY - P**

NOMS close 12 noon Monday, 31 January 2022
 HCP declared by 5pm Tuesday, 1 February 2022
 ACC close 9am Wednesday, 2 February 2022
 RIDERS close 12 noon Wednesday, 2 February 2022

- 1 GOLD SOVEREIGN STAKES** **CONDITIONS**
 For 2YO. Apprentices cannot claim
 1200m - Set Weights **LISTED**
 Of \$150,000 - \$90,000; \$27,000; \$13,500;
 \$6,750; \$3,700; \$3,000; \$3,000; \$3,000
- 2 3YO & Upwards Maiden** **TASBRED**
 1200m - Set Weights
 Of \$21,000 - \$13,125; \$4,200; \$2,100;
 \$945; \$420; \$210
- 3 3YO & Upwards Maiden**
 1400m - Set Weights
 Of \$21,000 - \$13,125; \$4,200; \$2,100;
 \$945; \$420; \$210
- 4 Maiden/Class 1** **TASBRED**
 2100m - Set Weights
 Of \$21,000 - \$13,125; \$4,200; \$2,100;
 \$945; \$420; \$210
- 5 0-62 Rating**
 1400m
 Of \$21,000 - \$13,125; \$4,200; \$2,100;
 \$945; \$420; \$210
- 6 Benchmark 62 Handicap**
 1600m
 Of \$21,000 - \$13,125; \$4,200; \$2,100;
 \$945; \$420; \$210
- 7 Benchmark 68 Handicap**
 1200m
 Of \$21,000 - \$13,125; \$4,200; \$2,100;
 \$945; \$420; \$210
- 8 Benchmark 68 Handicap**
 1400m **MM VOUCHER**
 Of \$21,000 - \$13,125; \$4,200; \$2,100;
 \$945; \$420; \$210
- 9 SYDESTON CUP** **CONDITIONS**
 Apprentices cannot claim
 2100m - Open Handicap
 Of \$30,000 - \$18,150; \$5,400; \$2,700;
 \$1,350; \$600; \$600; \$600; \$600

FRIDAY 11 FEBRUARY 2022**TASMANIAN RACING CLUB****HOBART - TURF - DAY - P**

NOMS close 12 noon Friday, 4 February 2022
 HCP declared by 5pm Monday, 7 February 2022
 ACC close 9am Tuesday, 8 February 2022
 RIDERS close 12 noon Tuesday, 8 February 2022

- 1 STRUTT STAKES** **CONDITIONS** **LISTED**
 For 3YO Fillies. Apprentices cannot claim
 2100m - Set Weights
 Of \$100,000 - \$60,000; \$18,000; \$9,000; \$4,500;
 \$2,500; \$2,000; \$2,000; \$2,000
- 2 TASMANIAN DERBY** **CONDITIONS** **LISTED**
 For 3YO. Apprentices cannot claim
 2200m - Set Weights
 Of \$150,000 - \$90,000; \$27,000; \$13,500; \$6,750;
 \$3,700; \$3,000; \$3,000; \$3,000
- 3 3YO Handicap** **TASBRED**
 1100m
 Of \$23,000 - \$14,375; \$4,600; \$2,300; \$1,035;
 \$460; \$230
- 4 3YO & Upwards Maiden** **TASBRED**
 1200m - Set Weights
 Of \$21,000 - \$13,125; \$4,200; \$2,100; \$945; \$420;
 \$210
- 5 Class 1 Handicap**
 1400m
 Of \$21,000 - \$13,125; \$4,200; \$2,100; \$945; \$420;
 \$210
- 6 Benchmark 62 Handicap**
 1100m
 Of \$21,000 - \$13,125; \$4,200; \$2,100; \$945; \$420;
 \$210
- 7 Benchmark 68 Handicap**
 1600m
 Of \$21,000 - \$13,125; \$4,200; \$2,100; \$945; \$420;
 \$210
- 8 BOW MISTRESS TROPHY** **CONDITIONS**
 For Fillies & Mares. Apprentices cannot claim
 1200m - Weight for Age **GROUP 3**
 Of \$150,000 - \$90,000; \$27,000; \$13,500; \$6,750;
 \$3,700; \$3,000; \$3,000; \$3,000

SUNDAY 13 FEBRUARY 2022

TASMANIAN RACING CLUB

HOBART - TURF - DAY - P

NOMS close 12 noon Monday, 7 February 2022
HCP declared by 5pm Tuesday, 8 February 2022
ACC close 9am Wednesday, 9 February 2022
RIDERS close 12 noon Wednesday, 9 February 2022

- 3YO & Upwards Maiden** **TASBRED**
1100m - Set Weights
Of \$23,000 - \$14,375; \$4,600; \$2,300; \$1,035;
\$460; \$230
- 3YO & Upwards Maiden** **TASBRED**
1400m - Set Weights
Of \$23,000 - \$14,375; \$4,600; \$2,300; \$1,035;
\$460; \$230
- Maiden/Class 1**
1600m - Set Weights
Of \$23,000 - \$14,375; \$4,600; \$2,300; \$1,035;
\$460; \$230
- Class 1 Handicap**
1200m
Of \$23,000 - \$14,375; \$4,600; \$2,300; \$1,035;
\$460; \$230
- Benchmark 62 Handicap**
1400m
Of \$23,000 - \$14,375; \$4,600; \$2,300; \$1,035;
\$460; \$230
- Benchmark 62 Handicap**
2100m
Of \$23,000 - \$14,375; \$4,600; \$2,300; \$1,035;
\$460; \$230
- Benchmark 76 Handicap**
1200m
Of \$23,000 - \$14,375; \$4,600; \$2,300; \$1,035;
\$460; \$230
- THOMAS LYONS STAKES** **CONDITIONS** **LISTED**
Apprentices cannot claim
1400m - Weight for Age
Of \$100,000 - \$60,000; \$18,000; \$9,000;
\$4,500; \$2,500; \$2,000; \$2,000; \$2,000
- LADBROKES HOBART CUP** **CONDITIONS** **GROUP 3**
Apprentices cannot claim
2400m - Open Handicap
Of \$250,000 - \$150,000; \$45,000; \$22,500;
\$11,250; \$6,250; \$5,000; \$5,000; \$5,000

SUNDAY 20 FEBRUARY 2022

TASMANIAN TURF CLUB

LAUNCESTON - TURF - TWILIGHT - P

NOMS close 12 noon Monday, 14 February 2022
HCP declared by 5pm Tuesday, 15 February 2022
ACC close 9am Wednesday, 16 February 2022
RIDERS close 12 noon Wednesday, 16 February 2022

- TASMANIAN OAKS** **CONDITIONS** **LISTED**
For 3YO Fillies. Apprentices cannot claim
2100m - Set Weights
Of \$150,000 - \$90,000; \$27,000; \$13,500; \$6,750;
\$3,700; \$3,000; \$3,000; \$3,000
- MAGIC MILLIONS 2YO CLASSIC**
Apprentices cannot claim
1200m - Set Weights
Of \$75,000 plus trophy to the value of \$500
REFER MM CONDITIONS **MM VOUCHER**
- MAGIC MILLIONS 3YO/4YO CLASSIC**
Apprentices cannot claim
1400m - Set Weights
Of \$65,000 plus trophy to the value of \$500
REFER MM CONDITIONS **MM VOUCHER**
- 3YO & Upwards Maiden**
1100m - Set Weights
Of \$21,000 - \$13,125; \$4,200; \$2,100; \$945;
\$420; \$210
- Maiden/Class 1**
2100m - Set Weights
Of \$21,000 - \$13,125; \$4,200; \$2,100; \$945;
\$420; \$210
- Benchmark 62 Handicap**
1600m
Of \$21,000 - \$13,125; \$4,200; \$2,100; \$945;
\$420; \$210
- Class 3 Handicap**
1200m
Of \$23,000 - \$14,375; \$4,600; \$2,300; \$1,035;
\$460; \$230
- Benchmark 68 Handicap**
1400m
Of \$21,000 - \$13,125; \$4,200; \$2,100; \$945;
\$420; \$210

WEDNESDAY 23 FEBRUARY 2022

TASMANIAN TURF CLUB

LAUNCESTON - TURF - DAY - P

NOMS close 12 noon Wednesday, 16 February 2022
HCP declared by 5pm Thursday, 17 February 2022
ACC close 9am Friday, 18 February 2022
RIDERS close 12 noon Friday, 18 February 2022

- 3YO CLASSIC** **CONDITIONS**
For 3YO. Apprentices cannot claim
1200m - Set Weights
Of \$75,000 - \$45,000; \$13,500; \$6,750; \$3,375;
\$1,875; \$1,500; \$1,500; \$1,500;
- 3YO & Upwards Maiden** **TASBRED**
1200m - Set Weights Of \$23,000 - \$14,375; \$4,600;
\$2,300; \$1,035; \$460; \$230
- 3YO & Upwards Maiden** **TASBRED**
1400m - Set Weights Of \$23,000 - \$14,375; \$4,600;
\$2,300; \$1,035; \$460; \$230
- Class 1 Handicap**
1400m Of \$23,000 - \$14,375; \$4,600; \$2,300;
\$1,035; \$460; \$230
- Benchmark 62 Handicap**
1200m Of \$23,000 - \$14,375; \$4,600; \$2,300;
\$1,035; \$460; \$230
- Benchmark 66 Handicap**
2100m Of \$23,000 - \$14,375; \$4,600; \$2,300;
\$1,035; \$460; \$230
- ROYAL RAMBO** **CONDITIONS**
Apprentices cannot claim
1200m - Quality Handicap
Of \$50,000 - \$30,250; \$9,000; \$4,500; \$2,250; \$1,000;
\$1,000; \$1,000; \$1,000
- MOWBRAY STAKES** **CONDITIONS** **LISTED**
Apprentices cannot claim
1600m - Weight for Age
Of \$100,000 - \$60,000; \$18,000; \$9,000; \$4,500;
\$2,500; \$2,000; \$2,000; \$2,000
- VAMOS STAKES** **CONDITIONS** **GROUP 3**
For Fillies & Mares. Apprentices cannot claim
1400m - Weight for Age
Of \$150,000 - \$90,000; \$27,000; \$13,500; \$6,750;
\$3,700; \$3,000; \$3,000; \$3,000
- LADBROKES LAUNCESTON CUP** **CONDITIONS** **GROUP 3**
Apprentices cannot claim
2400m - Open Handicap
Of \$250,000 - \$150,000; \$45,000; \$22,500; \$11,250;
\$6,250; \$5,000; \$5,000; \$5,000

WEDNESDAY 2 MARCH 2022

TASMANIAN TURF CLUB

LAUNCESTON - TURF - NIGHT - C

NOMS close 12 noon Thursday, 24 February 2022
HCP declared by 5pm Friday, 25 February 2022
ACC close 9am Monday, 28 February 2022
RIDERS close 12 noon Monday, 28 February 2022

- 2YO Maiden** **TASBRED**
1100m - Set Weights
Of \$22,500 - \$14,063; \$4,500; \$2,250;
\$1,013; \$450; \$225
- 3YO & Upwards Maiden**
1200m - Set Weights
Of \$21,000 - \$13,125; \$4,200; \$2,100; \$945;
\$420; \$210
- Maiden/Class 1**
1600m - Set Weights
Of \$21,000 - \$13,125; \$4,200; \$2,100; \$945;
\$420; \$210
- Class 1 Handicap**
1200m
Of \$21,000 - \$13,125; \$4,200; \$2,100; \$945;
\$420; \$210
- Benchmark 62 Handicap**
1400m
Of \$21,000 - \$13,125; \$4,200; \$2,100; \$945;
\$420; \$210
- Benchmark 62 Handicap**
2100m
Of \$21,000 - \$13,125; \$4,200; \$2,100; \$945;
\$420; \$210
- Benchmark 68 Handicap**
1600m
Of \$21,000 - \$13,125; \$4,200; \$2,100; \$945;
\$420; \$210
- Benchmark 76 Handicap**
1100m
Of \$23,000 - \$14,375; \$4,600; \$2,300;
\$1,035; \$460; \$230

WEDNESDAY 9 MARCH 2022

TASMANIAN TURF CLUB

LAUNCESTON - TURF - NIGHT - C

NOMS close 12 noon Thursday, 3 March 2022
 HCP declared by 5pm Friday, 4 March 2022
 ACC close 9am Monday, 7 March 2022
 RIDERS close 12 noon Monday, 7 March 2022

- 1 **3YO & Upwards Maiden** TASBRED
 1100m - Set Weights
 Of \$21,000 - \$13,125; \$4,200; \$2,100; \$945;
 \$420; \$210
- 2 **3YO & Upwards Maiden**
 1400m - Set Weights
 Of \$21,000 - \$13,125; \$4,200; \$2,100; \$945;
 \$420; \$210
- 3 **Maiden/Class 1** TASBRED
 2100m - Set Weights
 Of \$21,000 - \$13,125; \$4,200; \$2,100; \$945;
 \$420; \$210
- 4 **Class 1 Handicap**
 1400m
 Of \$21,000 - \$13,125; \$4,200; \$2,100; \$945;
 \$420; \$210
- 5 **0-62 Rating**
 1100m
 Of \$21,000 - \$13,125; \$4,200; \$2,100; \$945;
 \$420; \$210
- 6 **0-62 Rating**
 1600m
 Of \$21,000 - \$13,125; \$4,200; \$2,100; \$945;
 \$420; \$210
- 7 **Benchmark 68 Handicap**
 1200m
 Of \$21,000 - \$13,125; \$4,200; \$2,100; \$945;
 \$420; \$210
- 8 **Benchmark 76 Handicap**
 1400m
 Of \$23,000 - \$14,375; \$4,600; \$2,300; \$1,035;
 \$460; \$230

WEDNESDAY 16 MARCH 2022

TASMANIAN TURF CLUB

LAUNCESTON - TURF - NIGHT - P

NOMS close 12 noon Thursday, 10 March 2022
 HCP declared by 5pm Friday, 11 March 2022
 ACC close 9am Monday, 14 March 2022
 RIDERS close 12 noon Monday, 14 March 2022

- 1 **3YO Maiden** TASBRED
 1100m - Set Weights
 Of \$22,500 - \$14,063; \$4,500; \$2,250; \$1,013;
 \$450; \$225
- 2 **3YO & Upwards Maiden**
 1200m - Set Weights
 Of \$21,000 - \$13,125; \$4,200; \$2,100; \$945;
 \$420; \$210
- 3 **3YO & Upwards Maiden** TASBRED
 1600m - Set Weights
 Of \$21,000 - \$13,125; \$4,200; \$2,100; \$945;
 \$420; \$210
- 4 **Class 1 Handicap**
 1200m
 Of \$21,000 - \$13,125; \$4,200; \$2,100; \$945;
 \$420; \$210
- 5 **Class 1 Handicap**
 1600m
 Of \$21,000 - \$13,125; \$4,200; \$2,100; \$945;
 \$420; \$210
- 6 **Benchmark 62 Handicap**
 1400m
 Of \$21,000 - \$13,125; \$4,200; \$2,100; \$945;
 \$420; \$210
- 7 **Open Handicap**
 1200m
 Of \$25,000 - \$15,625; \$5,000; \$2,500; \$1,125;
 \$500; \$250
- 8 **TASMANIAN ST LEGER** CONDITIONS
 Apprentices cannot claim
 2400m - Quality Handicap
 Of \$50,000 - \$30,250; \$9,000; \$4,500; \$2,250;
 \$1,000; \$1,000; \$1,000; \$1,000

SUNDAY 27 MARCH 2022

TASMANIAN RACING CLUB

LAUNCESTON - TURF - DAY - C

NOMS close 12 noon Monday, 21 March 2022
 HCP declared by 5pm Tuesday, 22 March 2022
 ACC close 9am Wednesday, 23 March 2022
 RIDERS close 12 noon Wednesday, 23 March 2022

- 1 **2YO Handicap**
 1200m
 Of \$23,000 - \$14,375; \$4,600; \$2,300; \$1,035;
 \$460; \$230
- 2 **3YO & Upwards Maiden**
 1100m - Set Weights
 Of \$21,000 - \$13,125; \$4,200; \$2,100; \$945;
 \$420; \$210
- 3 **3YO & Upwards Maiden** TASBRED
 1400m - Set Weights
 Of \$21,000 - \$13,125; \$4,200; \$2,100; \$945;
 \$420; \$210
- 4 **Maiden/Class 1**
 2100m - Set Weights
 Of \$21,000 - \$13,125; \$4,200; \$2,100; \$945;
 \$420; \$210
- 5 **Class 1 Handicap**
 1400m
 Of \$21,000 - \$13,125; \$4,200; \$2,100; \$945;
 \$420; \$210
- 6 **Benchmark 62 Handicap**
 1600m
 Of \$21,000 - \$13,125; \$4,200; \$2,100; \$945;
 \$420; \$210
- 7 **Class 3 Handicap**
 1100m
 Of \$23,000 - \$14,375; \$4,600; \$2,300; \$1,035;
 \$460; \$230
- 8 **Benchmark 68 Handicap**
 1400m
 Of \$21,000 - \$13,125; \$4,200; \$2,100; \$945;
 \$420; \$210

WEDNESDAY 30 MARCH 2022

TASMANIAN TURF CLUB

LAUNCESTON - TURF - NIGHT - C

NOMS close 12 noon Thursday, 24 March 2022
 HCP declared by 5pm Friday, 25 March 2022
 ACC close 9am Monday, 28 March 2022
 RIDERS close 12 noon Monday, 28 March 2022

- 1 **3YO & Upwards Maiden** TASBRED
 1200m - Set Weights
 Of \$21,000 - \$13,125; \$4,200; \$2,100; \$945;
 \$420; \$210
- 2 **3YO & Upwards Maiden**
 1400m
 Of \$21,000 - \$13,125; \$4,200; \$2,100; \$945;
 \$420; \$210
- 3 **Maiden/Class 1**
 1600m - Set Weights
 Of \$21,000 - \$13,125; \$4,200; \$2,100; \$945;
 \$420; \$210
- 4 **Class 1 Handicap**
 1100m
 Of \$21,000 - \$13,125; \$4,200; \$2,100; \$945;
 \$420; \$210
- 5 **Benchmark 62 Handicap**
 1200m
 Of \$21,000 - \$13,125; \$4,200; \$2,100; \$945;
 \$420; \$210
- 6 **Benchmark 62 Handicap**
 1400m
 Of \$21,000 - \$13,125; \$4,200; \$2,100; \$945;
 \$420; \$210
- 7 **Benchmark 68 Handicap**
 2100m
 Of \$21,000 - \$13,125; \$4,200; \$2,100; \$945;
 \$420; \$210
- 8 **Benchmark 76 Handicap**
 1600m
 Of \$23,000 - \$14,375; \$4,600; \$2,300; \$1,035;
 \$460; \$230

RACING

information

66 Track Rating Scale

67 Tasmanian Racecourse
Overview

68-69 Hobart Racecourse

70-71 Launceston Racecourse

72-73 Devonport Racecourse

74-75 Tasracing Thoroughbred
Schedule of Fees

76-77 Set Weights Scale

78-79 RBH Template

80-81 TasBred

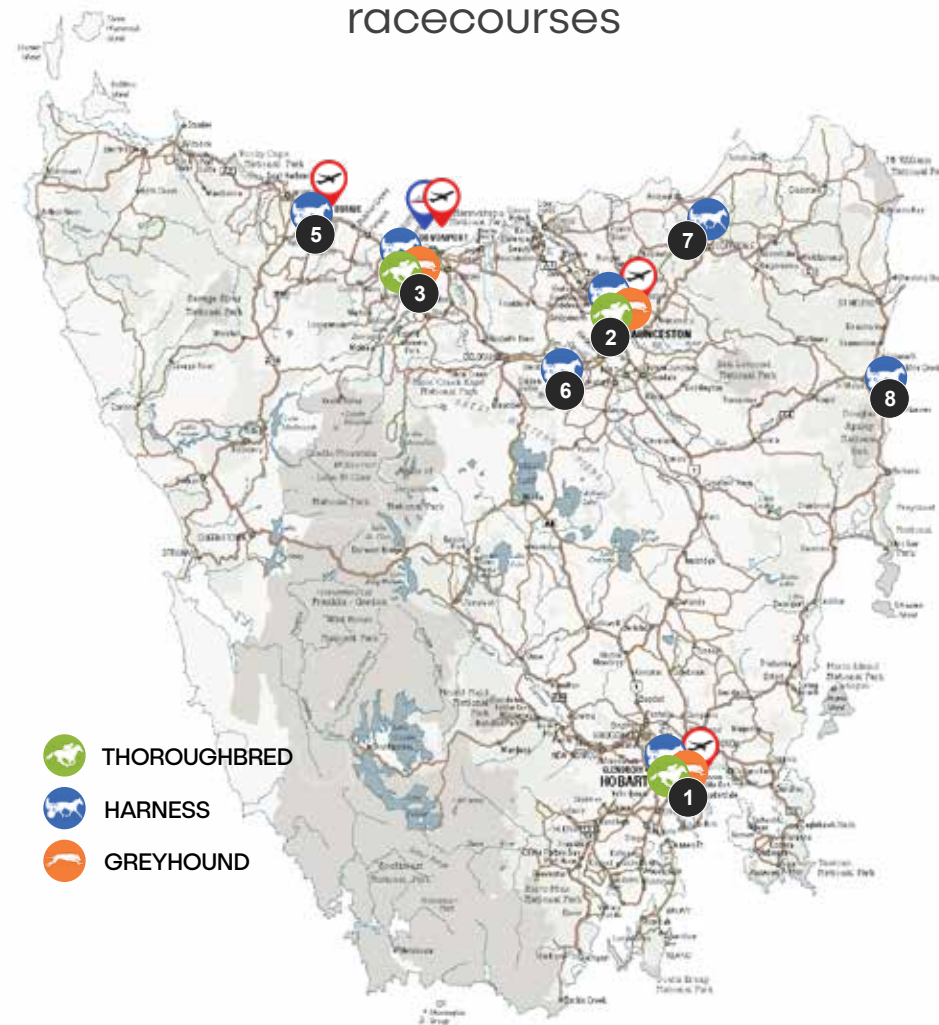
TRACK RATING SCALE

- 1 FIRM** Dry hard track
- 2 FIRM** Firm track with reasonable grass coverage
- 3 GOOD** Track with good grass coverage & cushion
- 4 GOOD** Track with some give in it
- 5 SOFT** Track with a reasonable amount of give in it
- 6 SOFT** Moist but not a badly affected track
- 7 SOFT** More rain affected track that will chop out
- 8 HEAVY** Rain affected track that horses will get into
- 9 HEAVY** Wet track getting into a squelchy area
- 10 HEAVY** Heaviest category track very wet towards saturation

For the latest track rating information and penetrometer readings visit: racingaustralia.com.au.



TASMANIAN racecourses



THOROUGHBRED RACECOURSES

- | | | | |
|--|--|--|---|
| 1 HOBART
Tasmanian Racing Club
Ladbroke Park Elwick | 2 LAUNCESTON
Tasmanian Turf Club
Ladbroke Racing Centre Mowbray | 3 DEVONPORT
Devonport Racing Club
Ladbroke All Weather Spreyton | 4 KING ISLAND
King Island Racing Club
Currie
[December-January] |
|--|--|--|---|

HOBART racecourse



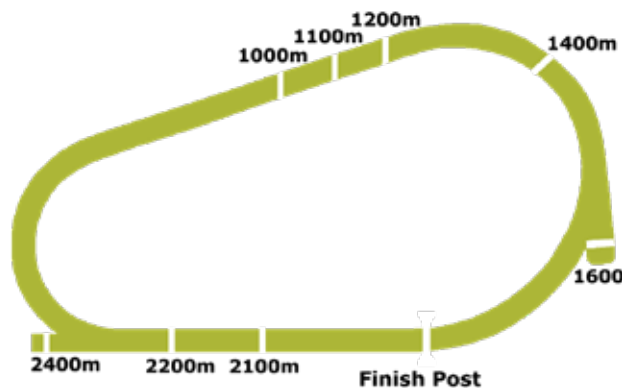
Hobart racecourse is located just 12 minutes from the Hobart CBD and 23 km's west of the Hobart Airport. It is a unique venue combining both modern facilities with a sense of history as you overlook Hobart's historic racecourse, the Derwent River, Mt Wellington and the skyline foothills.

On site parking offers plenty of free accessible parking.

THE TRACK

The redevelopment of the Elwick Track in Hobart is now completed, showcasing one of Tasmania's home grown exports, 'Strathayr' turf which is highly respected for its durability and consistency. The new 28 metre wide grass track is set to deliver first class racing.

Direction: Anti-clockwise
Circumference: 1950m
Straight: 320m
Track Width: Approx 28m
Surface: Turf - Strathayr



NEW TRACK RECORDS

DISTANCE	TIME	HOBART (Elwick Track)	DATE
1000m	0:59.40	Gee Gee Goldenlass	04/03/2020
1100m	1:05.20	Gee Gee True Story	04/03/2020
1200m	1:11.01	Gee Gee True Story Ruettiger (NZ)	29/03/2020 29/03/2020
1400m	1:24.58	Mandela Effect	09/02/2020
1600m	1:40.20	Banstead	01/02/2020
2100m	2:12.37	Hela	07/02/2021
2200m	2:18.07	Toorak Affair	01/02/2020
2400m	2:30.29	Toorak Affair	09/02/2020

TRACK SAFETY LIMITS - HOBART

Elwick (Course Proper)

Rail Position	True	1-3m	4m	5m	6m	7m	8m	9m	10m	11m	12m	13m	14m+
3200m	15	15	15	15	15	15	14	14	14	14	14	14	14
2400m	16	16	16	16	16	16	14	14	14	14	14	14	14
2200m	16	16	16	16	16	16	14	14	14	13	12	12	10
2100m	15	15	15	15	15	15	14	14	14	13	12	12	10
1600m	14	14	14	14	14	14	14	14	14	12	12	12	10
1400m	14	14	14	14	14	14	12	12	11	11	10	10	9
1200m	15	15	15	15	15	15	14	15	14	14	12	12	10
1100m	15	15	15	15	15	15	14	14	14	14	12	12	10
1000m	14	14	14	14	14	14	12	12	11	11	11	11	9
900m	12	12	12	12	12	12	10	10	10	10	10	10	8

1. In the event of a rail having to be moved or for any other safety reason, the Chairman of Stewards may re-assess the field limits accordingly.
2. Field limits for all 2YO events programmed between the first day of the current racing season (1st August) and the last day of the calendar year (31st Dec) inclusive, will be reduced by two (2) runners. (Excluding 1000 metre starts).

NOTE: When the moveable rail is not in the true position, Tasracing may opt to run races at approximate distances. This will permit the barrier stalls to be placed at the farthest distance from turns. In such cases, field limits may be reassessed by Stewards.

JUMP OUTS

Available post official trials. Nominations to be made through Racing Australia and will close at 9am on the day prior unless otherwise advertised. Unnamed horses must be nominated by email to nominations@tasracing.com.au

GRASS GALLOPS

Availability as determined by the Racecourse Manger. Trainers will be notified of availability in advance via text message. Requests must be made to Tasracing by 2pm on the preceding day.

LAUNCESTON *racecourse*



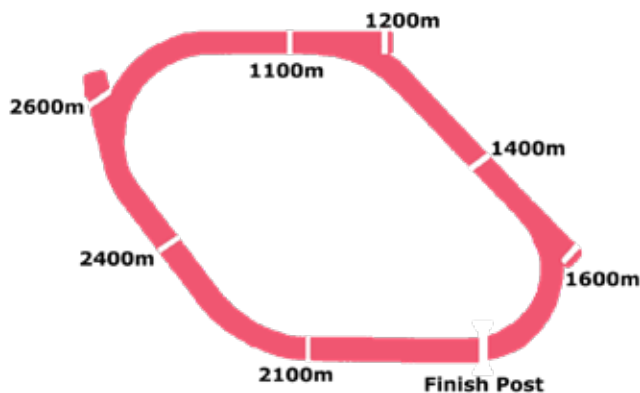
The Launceston racecourse is located approximately 3 kilometres from the heart of Launceston City in Jellico Street, Mowbray.

Launceston is the second largest city in Tasmania and is an ideal base from which to experience essential Tasmanian historic villages, national trust properties, wilderness, arts, markets, national parks, breath-taking scenery and internationally acclaimed food and wine grown in a clean, unspoilt environment. Launceston is a thriving City with accommodation of an international standard.

THE TRACK

The Launceston racecourse surface showcases one of Tasmania's home grown exports, 'Strathayr' turf which is highly respected for its durability and consistency.

- Direction: Anti-clockwise
- Circumference: 1817m
- Straight: 250m
- Track Width: Approx 25m
- Surface: Turf - Strathayr



TRACK RECORDS

DISTANCE	TIME	LAUNCESTON	DATE
800m	0-44.73	Il Regalo	09/11/2016
1100m	1-03.03	Deroche	20/01/2021
1200m	1-08.05	I'm Wesley	01/11/2017
1400m	1-21.55	I'm Wesley	06/12/2017
1600m	1-34.49	Mr America	01/11/2017
2100m	2-08.53	Kanji	20/12/2017
2400m	2-29.56	Bondeiger	28/02/2018
2650m	2-47.87	Eastender	14/03/2018

TRACK SAFETY LIMITS - LAUNCESTON

DAY MEETINGS (Prior to Sunset)									
RAIL	True	1m	2m	3m	4m	5m	6m	7m	8-9m
2600m	13	13	13	13	13	13	13	10	10
2400m	16	16	16	16	16	16	16	14	14
2100m	15	14	14	14	14	14	14	12	10
1600m	14	14	14	14	14	14	14	14	14
1400m	14	14	14	14	14	14	14	14	14
1200m	14	14	14	14	14	14	14	14	14
1100m	10	10	10	10	10	10	10	10	10
800m*	10	10	10	10	10	10	10	10	10

* NIGHT MEETINGS (After Sunset)									
True	1m	2m	3m	4m	5m	6m	7m	8m	9m+
12	12	12	12	12	12	12	10	10	10
12	12	12	12	12	12	12	11	11	11
12	12	12	12	12	12	12	11	10	10
12	12	12	12	12	12	12	11	11	11
12	12	12	12	12	12	12	11	11	11
10	10	10	10	10	10	10	10	10	10
10	10	10	10	10	10	10	10	10	10

* 2YO's only

- In the event of a rail having to be moved or for any other safety reason, the Chairman of Stewards may re-assess the field limits accordingly.
- *Day Meeting field limits will apply for the following: Open, Group & Listed races (Excluding 2YO races)
- Field limits for all 2YO events programmed between the first day of the current racing season (1st August) and the last day of the calendar year (31st Dec) inclusive, will be reduced by two (2) runners. (Excluding 800m and 1100 metre start).

LONGFORD
All distances
8
Longford Cup
10

NOTE: When the moveable rail is not in the true position, Tasracing may opt to run races at approximate distances. This will permit the barrier stalls to be placed at the farthest distance from turns. In such cases, field limits may be reassessed by Stewards.

GRASS GALLOPS - (LONGFORD)

Available Tuesday and Friday on request. Contact Bryan Dunn on (03) 6391 1755.

JUMP OUTS

Available each non race day after 10:00 am and on Wednesday and Saturday after 9:00 am unless otherwise specified by the track steward.

DEVONPORT racecourse



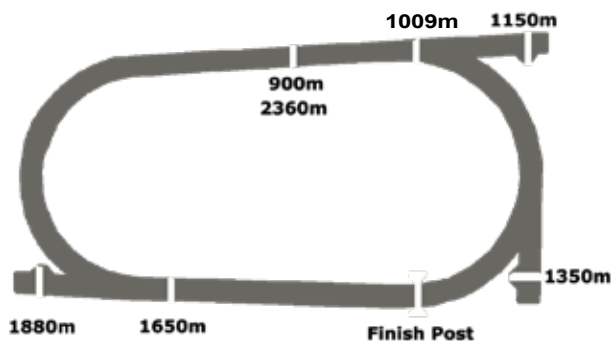
The Devonport Racing Club is situated only 9 minutes from the centre of Devonport and only 14 minutes from the Spirit of Tasmania's dock. The DRC offers free parking, on course betting facilities, a bar and bistro and an upstairs function centre enjoying panoramic views of the track.

The bar is open throughout the week, providing members and guests with a great place to meet and enjoy live racing from around Australia and the world on Sky Channel.

THE TRACK

The Devonport racecourse features an all-weather, synthetic surface with no demonstrated track bias, allowing winners from all positions in running and critically facilitates performance consistent with exposed form.

Direction: Anti-clockwise
 Circumference: 1459m
 Straight: 305m
 Track Width: 18m
 Surface: Synthetic-Tapeta



TRACK RECORDS

Distance	Time	DEVONPORT	Date
900m	0-52.79	Count Out	26/06/2015
1009m	0-58.81	Divi	08/01/2020
1150m	1-07.17	I'm Wesley	11/09/2016
1350m	1-19.81	Dothraki Princess	29/09/2019
1650m	1-39.99	Geegees Baritone	26/12/2016
1880m	1-54.46	Newhart	23/08/2015
2360m	2-30.52	Holy Cat	07/07/2015

TRACK SAFETY LIMITS

DEVONPORT	
Rail Position	True
2360m	14
1880m	14
1650m	14
1350m	10
1150m	14
1009m	12
900m	12

- For any other safety reason, the Chairman of Stewards may re-assess the field limits accordingly.
- Field limits for all 2YO events programmed between the first day of the current racing season (1st August) and the last day of the calendar year (31st Dec) inclusive, will be reduced by two (2) runners.
- Field limits for all 1009m and 900m 2YO events will have a field limit of 10.




STANDARD RACES (excluding Group, Listed and Feature Races)
Fee inc GST

Nomination	Free
Non-acceptance	Free
Scratching Fee (Pre 4pm day prior to raceday)	\$110
Scratching Fee (Post 4pm day prior to raceday)	\$220
Scratching Fee - Vet Certificate	OPTION 1 \$88 (including GST) with NO stand-down period. Refer option condition No. 1
Scratching Fee - Vet Certificate	OPTION 2 Free; with a 30-day stand-down period. The horse is ineligible to race for 30 days from the final scratching time of the race meeting for which it was nominated. Refer option conditions No's 1 & 2

TRACK GALLOPS, JUMP OUTS and TRIALS
Fee inc GST

Track Gallops – Out of Sessions	\$55
Track Gallops – Scheduled (Hobart)	\$22
Track Gallops – Scheduled (Longford)	\$11
Jump Outs with Barrier Staff Provided	\$55
Official Trials	\$110
Scratching fee with Vet Certificate*	Free

* No scratching fee will be payable on the submission of an official veterinary certificate within 5 days of the scheduled trial.

GROUP, LISTED AND FEATURE RACES over \$100,000
Fee inc GST

Nomination fee	
\$25,000 to \$99,999	Nil
\$100,000 to \$149,999	\$220
\$150,000 to \$199,999	\$330
\$200,000 and above	\$440
Acceptance fee	1% of the advertised prizemoney for races of \$100,000 or more
Scratching Fee - Vet Certificate	OPTION 1 \$220 (including GST) with NO stand-down period. Refer option condition No. 1
Scratching Fee - Vet Certificate	OPTION 2 Free; with a 30-day stand-down period. The horse is ineligible to race for 30 days from the final scratching time of the race meeting for which it was nominated. Refer option conditions No's 1 & 2
Scratching Fee (Group, Listed and Feature Races only)	50% of the final acceptance fee for the race or \$220 (inc GST), whichever may be the greater amount.

OPTION CONDITIONS:

- Both options are subject to a veterinary certificate being supplied not later than 5pm on the fifth business day following the day of the running of the race from which the horse was withdrawn. E.g. Friday following a Sunday meeting.
- Both options are subject to a veterinary certificate being supplied not later than 5pm on the fifth business day following the day of the running of the race from which the horse was withdrawn. E.g. Friday following a Sunday meeting.

SET WEIGHTS SCALE

LOCAL RULE - 9 WEIGHTS PENALTIES AND ALLOWANCES

9.1 In all handicap events, unless otherwise specified, the minimum handicap weight shall be **NO LESS THAN 54 kgs**. The Handicapper may, at his discretion, take into account the 2.0 kg filly and mare allowance except where it reduces the minimum weight beyond 54 kgs. (amdt effective 1/1/2015)

9.2 Rescinded

9.3 Set Weight Maiden Scales

(a) 3 Year Old +

	AUG-OCT	NOV-JAN	FEB-APR	MAY-JUL
4+ G/E	58.5	58.5	58.5	58.5
3YO C/G	56	57	58	58.5
4+ M	56.5	56.5	56.5	56.5
3YO F	54	55	56	56.5

(b) 3 Year Old+ C/G/E

	AUG-OCT	NOV-JAN	FEB-APR	MAY-JUL
4+ G/E	58	58	58	58
3YO C/G	55.5	56.5	57.5	58

(c) 3 Year Old+ F/M

	AUG-OCT	NOV-JAN	FEB-APR	MAY-JUL
4+ M	58	58	58	58
3YO F	55.5	56.5	57.5	58

(d) 4 Year Old +

	ALL SEASONS
G/E	58.5
M	56.5

(e) 3 Year Old Maiden

	ALL SEASONS
C/G	57
F	55

(f) 2 Year Old Maiden

	ALL SEASONS
C/G	57
F	55

(g) 3 Year Old C/G

	ALL SEASONS
	57

(h) 3 Year Old F

	ALL SEASONS
	57

(i) 2 Year Old C/G

	ALL SEASONS
	57

(j) 2 Year Old F

	ALL SEASONS
	57

(k) Division of a Maiden by sex after acceptances

	AUG-OCT	NOV-JAN	FEB-APR	MAY-JUL
4+ G/E	58	58	58	58
3YO C/G	55.5	56.5	57.5	58
4+ M	58	58	58	58
3YO F	55.5	56.5	57.5	58

(l) Maiden & Class 1

	AUG-OCT	NOV-JAN	FEB-APR	MAY-JUL
4+ G/E Class 1	59	59	59	59
4+ M Class 1	57	57	57	57
4+ G/E Maiden	57	57	57	57
4+ M Maiden	55	55	55	55

(m) Class 4

	AUG-OCT	NOV-JAN	FEB-APR	MAY-JUL
Class 4	58	58	58	58
Class 3	57	57	57	57
Class 2/1 Mdn	55	55	55	55

(n) 2 Year Old & Up Maiden

		APR	MAY-JUL
4YO+ G/E		58.5	58.5
4YO+ M		56.5	56.5
3YO+ C&G		58	58.5
3YO F		56	56.5
2YO C&G		56	56
2YO F		54	54

ALLOWANCES

3YO ALLOWANCE

1 kg Aug-Dec;
0.5 kg Jan-Apr;
nil May-Jul

2YO ALLOWANCE

3 kg Jan-Apr;
2.5 kg May-Jul

(The minimum handicap weight shall be **NO LESS THAN 54kg**)

FILLIES/MARES

2kg All Year

3 YEAR OLD

1kg Aug-Jan
Nil Feb-Jul

9.4 Prior to the declaration of Acceptance the Handicapper may adjust the weight of any horse whose weight as published was incorrect:

- because of a clerical error; or
- because of an error or misunderstanding on the Handicapper's part as to the status, age or sex of the horse.

TASMANIAN RESTRICTED CLASS (54.0 MIN)

RATING	CLASS 3	CLASS 1	BM 76	BM 74	BM 68	BM 66	BM 62	BM 60	2YO HCP
90									
89									
88									
87									
86									
85									
84			63.00						
83			62.50						
82			62.00	63.00					
81			61.50	62.50					
80			61.00	62.00					
79	63.00		60.50	61.50					
78	62.50		60.00	61.00					
77	62.00		59.50	60.50					
76	61.50		59.00	60.00	63.00				
75	61.00		58.50	59.50	62.50				
74	60.50		58.00	59.00	62.00	63.00			63.00
73	60.00		57.50	58.50	61.50	62.50			62.50
72	59.50	63.00	57.00	58.00	61.00	62.00			62.00
71	59.00	62.50	56.50	57.50	60.50	61.50			61.50
70	58.50	62.00	56.00	57.00	60.00	61.00			61.00
69	58.00	61.50	55.50	56.50	59.50	60.50			60.50
68	57.50	61.00	55.00	56.00	59.00	60.00	63.00		60.00
67	57.00	60.50	54.50	55.50	58.50	59.50	62.50		59.50
66	56.50	60.00	54.00	55.00	58.00	59.00	62.00	63.00	59.00
65	56.00	59.50		54.50	57.50	58.50	61.50	62.50	58.50
64	55.50	59.00		54.00	57.00	58.00	61.00	62.00	58.00
63	55.00	58.50			56.50	57.50	60.50	61.50	57.50
62	54.50	58.00			56.00	57.00	60.00	61.00	57.00
61	54.00	57.50			55.50	56.50	59.50	60.50	56.50
60		57.00			55.00	56.00	59.00	60.00	56.00
59		56.50			54.50	55.50	58.50	59.50	55.50
58		56.00			54.00	55.00	58.00	59.00	55.00
57		55.50				54.50	57.50	58.50	54.50
56		55.00				54.00	57.00	58.00	54.00
55		54.50					56.50	57.50	
54		54.00					56.00	57.00	
53							55.50	56.50	
52							55.00	56.00	
51							54.50	55.50	
50							54.00	55.00	
49								54.50	
48								54.00	

RBH TEMPLATE

RATING	TAS FEATURE RACES 54.0 Min	TAS OPEN 54.0 Min	VIC 3YO OPEN 54.0 Min
109	61.0		
108	60.5		
107	60.0		
106	59.5		
105	59.0		
104	58.5	66.5	
103	58.0	66.0	
102	57.5	65.5	
101	57.0	65.0	
100	56.5	64.5	
99	56.0	64.0	
98	55.5	63.5	
97	55.0	63.0	
96	54.5	62.5	
95	54.0	62.0	
94	53.5	61.5	62.0
93	53.0	61.0	62.0
92	52.5	60.5	61.5
91	52.0	60.0	61.5
90	51.5	59.5	61.0
89		59.0	61.0
88		58.5	60.5
87		58.0	60.5
86		57.5	60.0
85		57.0	60.0
84		56.5	59.5
83		56.0	59.5
82		55.5	59.0
81		55.0	59.0
80		54.5	58.5
79		54.0	58.5
78		53.5	58.0
77		53.0	57.5
76		52.5	57.0
75		52.0	56.5
74		51.5	56.0
73			55.5
72			55.0
71			54.5
70			54.0
69			53.5
68			53.0
67			

**TASMANIAN RATINGS
BASED TEMPLATE**

INSTRUCTIONS:

Follow the line across from the rating to find the weight a horse would carry in the various race-type columns.

FILLIES AND MARES:

When fillies and mares race against male horses they shall receive a 2.0 kg weight allowance.

3YO's:

When 3YO horses race against older horses they shall receive a weight allowance which is a sliding scale that varies from 2.5kg in August to nil by the end of the season. In open races they shall receive a weight allowance at the handicapper's discretion. Some Victorian race columns have been included to provide a guide to the weights a horse might expect to receive in these events.

Unraced horses rated 59 are eligible to compete in Benchmark 62



THOROUGHBRED BREEDING INCENTIVE SCHEME

LOOK FOR THE LOGO | SHARE THE REWARDS

More than **\$1.5 MILLION** in prizemoney & bonuses!

The **TASBRED** Incentive Scheme commenced in the 2018/19 Racing Season and replaces the tasBonus Incentive Scheme. \$1.54M in bonuses will be on offer to eligible 2, 3 & 4YO horses, distributed across 72* races..

ELIGIBILITY

Yearlings that qualify for the scheme are:

a) TASMANIAN SIRE

b) INTERSTATE SIRE

(**BREEDBACK**) (mare must be Tasmanian owned and was served by a stallion which stood in Tasmania during the following year's breeding season. – based on Australia Stud Book)

c) TASMANIAN REARED*

(the foal and dam must have resided in Tasmania for at least 6 continuous months between when the foal was born and the foals first birthday as listed by the Australian Stud Book).

BONUSES

Offered on 72* Selected Races

- All 2YO maiden races
- Selected 2YO Handicaps up to 1400m, under \$30k prizemoney
- All 3YO maiden races
- Selected 3YO Handicaps up to 1400m, under \$30k prizemoney
- Selected 2YO/3YO & Up Maidens 1200m, 1400m & 1600m races
- Selected Maiden / Class 1 1600m & 2100m races
- **2 x TASBRED ONLY races with prizemoney of \$50,000**
- Owner and Breeder SuperVOBIS bonus matched for **Tasmanian sired** horses who win in Victorian SuperVOBIS races.

COSTS

TASMANIAN SIRE

\$550 (gst incl)

INTERSTATE BRED

\$1,100 (gst incl)

TASMANIAN REARED

\$1,650 (gst incl)

A one off nomination fee is paid to Tasracing when the horse is a yearling. The horse then becomes eligible for a bonus whilst it is a 2, 3 or 4 year old, for a win in any specified **TASBRED** nominated race.

* Supporting documentation Required. * Every endeavour is taken to schedule 72 TASBRED eligible races per racing season

BONUS PAYMENTS:

Winning Bonus payments are restricted to owners and breeders only, as described in the table below:

NOMINATOR DETAILS	BREEDER	OWNER	TRAINER	JOCKEY
Payment for a Breeder Nominated Horse (excl GST)	\$4,000	\$16,000	\$1,000	\$800*
Payment for an Owner Nominated Horse (excl GST)	\$0	\$16,000	\$1,000	\$800*

* \$500 paid to Jockey Welfare Fund



Terms & conditions available at www.tasracingcorporate.com.au

For additional information or enquiries contact Angela Barrett:

☎ (03) 6212 9307 ✉ a.barrett@tasracing.com.au

TASBRED THOROUGHBRED BREEDING INCENTIVE SCHEME

Visit tasracingcorporate.com.au for full details

INDUSTRY

information

[Updates from Tasracing - Racing Australia, Tasracing Local Rules & Policies and the Office of Racing Integrity]

- 84 Racing Australia Updates
- 85 Tasracing Local Rules & Policy Updates
- Tasracing Covid-19 Tasmanian Thoroughbred Racing Standard Operating Procedures Update Information
- 86 The Office of Racing Integrity - Stewards Notices
- 87 Industry Wellbeing Support Program





AMENDMENTS

OR RULE 6 OWNERSHIP RESTRICTIONS ON PERSONS THE SUBJECT OF AN ENFORCEMENT ACTION APPLICATION

SUMMARY:

Under the Trainer and Owner Reforms (TOR) Rules in Schedule 2 to the Australian Rules of Racing, where an owner has failed to pay their training fees as required (and has not lodged a Dispute Notice in respect of them) a trainer may lodge an Enforcement Action Application (EAA) against the owner. Upon lodging an EAA, the trainer may seek the following consequences be applied against the owner until the outstanding fees have been paid:

- owner not permitted to transfer the horse to another trainer (if the owner owns at least 50% of the horse);
- owner not permitted to transfer their share in the horse to another person; and
- owner's prizemoney is frozen and redirected to the trainer.

However, an EAA issued against a defaulting owner does not restrict that owner from entering the ownership of other horses, even while the debts remain unpaid. This can affect future training and joint ownership relationships, as participants may unwittingly enter into arrangements with persons who have a history of not paying their training fees and who can continue to accumulate training debts throughout the industry. This has the potential to create negative experiences for participants and can threaten (particularly for owners) their ongoing involvement in the industry.

To address this situation, Racing Australia has approved amendments to TOR Rule 6, such that where a defaulting owner is the subject of a current EAA he or she will be prohibited from entering the ownership of any other horse. Only once the EAA is lifted (i.e. by payment of the training debt or through agreement with the trainer) will such an owner be permitted to

acquire and register ownership interests in other horses. The rule change includes a discretionary element that allows Racing Australia/Principal Racing Authorities to waive any relevant ownership restriction where they believe it will assist in reducing the training debt owed by a defaulting owner.

These changes will not affect a defaulting owner's existing ownership in other horses (if any) given the potential for that to affect other innocent owners.

The rule change will take effect with the start of the new racing season on 1 August 2021, which will provide sufficient time for defaulting owners to clear their training debts.

Amend TOR Rule 6 as follows:

TOR Rule 6 – Consequences if the presumption of a training debt arises

...

(6) Subject to subrule (7), if an EAA has been applied by Racing Australia and/or a PRA against an owner under this rule, while that EAA remains in place:

(a) that owner must not, either directly or indirectly, acquire an interest in another horse and/or lodge with Racing Australia or a PRA in respect of another horse:

- (i) a Foal Ownership Declaration;
 - (ii) a registration application;
 - (iii) a transfer of ownership application, except for the purpose of that owner selling his or her interest in another horse; or
 - (iv) a lease application; and
- (b) Racing Australia and/or a PRA must not process any such application or lodgment.

(7) Racing Australia and/or a PRA (as applicable) may waive any prohibitions in subrule (6) if they are of the opinion that such waiver will assist in reducing the relevant owner's training fees and/or training disbursements debt. **Date of effect: 1 August 2021**



AMENDMENTS TO LOCAL RULES & POLICIES

SECTION 11 | BALLOTING CONDITIONS

11.1 (d)

- (d) (i) In TWO-YEAR-OLD OPEN CLASS SET WEIGHT RACES, prior to 1 February, under \$100k, the horses shall be eligible in the following order. **(Amended Rule effective 01/09/21)**
1. Unraced horses which have won a trial.
 2. Unraced horses which have placed 2nd in a trial.
 3. Unraced horses which have placed 3rd in a trial.
 4. Unraced horses which have not finished 1st to 3rd in a trial.
 5. Horses scratched by stewards due to no rider availability at previous meeting.
 6. Horses subject to Balloted Out List conditions and rankings (refer LR 11.1(a)(ii) below).
 7. Horses will then be eliminated as per 11.1(e) Ratings Based Handicapping Balloting.
- (ii) In TWO-YEAR-OLD RACES (UNLESS OTHERWISE SPECIFIED) horses will be eliminated as per LR11.1(e) Ratings Based Handicapping Balloting.



COVID-19 SAFE STANDARD OPERATING PROCEDURES

Tasracing Thoroughbred Race Meetings – Statewide
Tasracing Thoroughbred Trials – Statewide

For all the latest racing information relating to COVID-19
visit [Tasracingcorporate.com.au](https://tasracingcorporate.com.au)

THE OFFICE OF RACING INTEGRITY

STEWARDS' NOTICES

MOUNTING YARD PROCEDURES NIGHT MEETINGS MOWBRAY.

All participants please note that the following procedure should be observed after a race concludes.

All unplaced horses to be unsaddled in the southern area of the parade ring and those riders proceed to weigh in the scales room without delay.

Placed horses 1 to 5 are to go to the placegetter stalls at the norther end of the mounting yard and unless the horse is unruly enter the stall. The rider is then to salute prior to dismounting and weigh at the scales provided in this area under supervision of the Chairman of Stewards.

These measures will enhance the image of Tasmanian racing and will not impact on the tight timeframes that we operate under at theses meetings. Stewards encourage all riders to ensure they possess enough race gear to enable weighing out one race ahead to avoid delays in saddling.

For further information contact:
The Office of Racing Integrity
(03) 6777 1900
Email:
operations@racingintegrity.tas.gov.au

Dominic Tyson
Chairman of Stewards



tasracing

INDUSTRY WELLBEING SUPPORT PROGRAM

Tasracing has transitioned our Employee Assistance Program provider from Relationships Australia to Positive Solutions, a Tasmanian owned and operated psychology, counselling and mediation provider. The local team at Positive Solutions are ready to welcome Tasracing staff and racing industry participants.

Employees and their immediate family are encouraged to utilise the confidential and free service for up to three (3) counselling sessions per calendar year, or more as approved on a case by case basis. Racing industry participants can access the program for up to two (2) counselling sessions each calendar year. Tasracing has 24/7 access to the EAP, which provides greater flexibility and access to suit our industry's varying work hours.

Counselling offices are located in Hobart, Burnie, Devonport and Launceston.

SESSIONS CAN BE HELD FACE TO FACE, VIA PHONE OR ONLINE TO SUIT YOUR INDIVIDUAL PREFERENCES.

Existing clients: If you are currently accessing support through Relationships Australia, your program will continue until its natural completion. It is important that you maintain continuity of care with the counsellor you have been working with.



To make a booking or enquire further about the program please contact the Positive Solutions toll-free number: 1800 064 039 or email admin@positivesolutions.com.au

INDUSTRY

contacts

- 90-92 Licenced Persons
 - Trainers
 - Restricted Plating
 - Farriers
 - Trial Riders
 - Jockeys
 - Apprentice Jockeys
 - Visiting Jockeys

- 93 Tasmanian Stallion Listing

- 94-95 Official Contacts
 - Tasracing, Racing Victoria, The office of Racing Integrity, Club Contacts



**OPEN PERMIT TRAINERS**

Surname	Given Names	Phone
Baker	Barry	0418 911 844
Berger	Shirley	0427 316 225
Brakey	Angela	0409 165 461
Carr	Sigrid	0409 195 242
Clark	Dylan	0400 976 376
Cotton	Sarah	0406 914 159
Dalco	Marion	0407 434 054
Dargan	Patrick	0405 660 750
Davis	Steven	0408 102 528
Doherty	Michael	0409 977 755
Duggan	Adrian	0412 212 581
Flannery	Joel	0475 038 195
Fulton	Alana	0400 539 989
Gandy	Stuart	0428 344 800
Gray	Liandra	0400 519 353
Hall	Rhonda	0419 135 567
Hamer	Rowan	0408 321 003
Hamilton	Kelvin	0438 371 342
Hanson	Tanya	0409 310 131
Hay	Nicholas	0408 371 760
Hill	John	0418 134 436
Hill	Paul	0428 377 139
James	Jenny	0417 126 384
Jones	Paul	0409 978 137
Keys	Tegan	0400 905 900
Lockhart	Stephen	0408 163 981
McCarthy	Kerrie	0438 947 706
Miller	Imogen	0407 750 985

OPEN PERMIT TRAINERS

Surname	Given Names	Phone
Mollross	Tammy	0411 410 848
Moore	Andrew	0427 755 583
Nishitani	Yassy	0437 115 764
Nunn	Aiden	0400 641 452
Poke	Vern	0428 140 643
Richards	Julie	0419 104 972
Roach	Andrew	0497 624 854
Ryan	Monica	0407 933 543
Schuuring	Nigel	0400 878 857
Stevenson	Glenn	0417 308 786
Thompson	Cameron	0400 416 406
Wells	Dean	0406 373 424
Wilson	Andrew	0418 399 607

OWNER TRAINERS

Surname	Given Names	Phone
Batt	Edwin	0400 009 471
Bramich	Dale	0427 639 222
Brazendale	Douglas	0408 350 210
Delon	Gaetan	0439 709 880
Franklin	Bradley	0408 025 514
Hodges	Glenn	0498 688 742
Jarman	Jessica	0439 447 243
Laskey	Leon	0407 338 911
Medhurst	Paul	0438 385 219
Milne	Kaye	0448 317 563
Nichols	Shaun	0448 802 070
O'Grady	Michael	0408 188 496

OWNER TRAINERS

Surname	Given Names	Phone
Paterson	Kirstin	0428 981 178
Shaw	Stephen	0409 579 916
Tyson	Drew	0478 011 044
Watling	Angela	0486 021 696
Webberley	Narelle	0409 681 244
Wells	Trent	0439 413 634

TRAINERS A

Surname	Given Names	Phone
Blacker	John	0418 144 205
Brunton	Scott	0438 726 889
Campbell	Barry	0417 370 991
Carr	Royston	0428 723 047
Evans	Terence	0417 406 245
Gaffney	Leanne	0407 300 995
Ganderton	Mark	0410 138 540
Goggin	Charlie	0418 583 132
Hay	Ian	0407 879 767
Keys	John	0438 261 955
Luttrell	John	0412 473 824
Luttrell	Peter	0459 332 099
McCulloch	Graeme	0417 018 895
McShane	Brendan	0409 211 155
McShane	Walter	0408 280 788
Ryan	Bill	0488 912 212
Trinder	Adam	0419 007 594
Trinder	Michael	0408 143 705
Wells	Leon	0418 144 330
White	Gary	0418 136 807

KING ISLAND TRAINERS

Surname	Given Names	Phone
Crack	Ron	0400 895 133
Keys	Robert	0427 611 354
Mcgarvie	Rod	0427 631 129
Monson	Debbie	0429 408 918
Muir	Tamara	0458 582 868
Taylor	Jim	0427 621 520

PRETRAINER

Surname	Given Names	Phone
Keating	David	0409 260 390

RESTRICTED PLATING

Surname	Given Names	Mobile
Brazendale	Douglas	0408 350 210
McShane	Walter	0408 280 788
Nunn	Aiden	0400 641 452

IMPORTANT:

Licensed Persons information is provided by the Office of Racing Integrity prior to the release of each publication. If any of your details in this section are incorrect, please contact them to have it amended. Please note, if you are not included in this listing, you may not have provided permission to publish with the Office of Racing Integrity and you will need to contact them to have this updated.

**JOCKEYS**

Surname	Given Names	Mobile
Baker	Troy	0409 645 375
Carr	Sigrid	0409 195 242
Catania	Georgie	0404 641 175
Ganderton	Daniel	0401 737 436
McCarthy	Hayley	0438 503 737
McCoull	Brendon	0419 597 434
Muhcu	Bulent	0437 257 882
Parish	Dianne	0438 051 859
Pires	David	0428 002 811
Toker	Ismail	0429 183 236
Ulucinar	Mehmet	0404 434 688

VISITING JOCKEYS

Surname	Given Names	Mobile
Darmanin	Anthony	0417 367 197
Holland	Dean	0400 692 000
Lyon	Jason	0410 975 761
Newitt	Craig	0410 645 671
Tan	Randy	0416 940 446

TRIAL RIDERS

Surname	Given Names	Mobile
Baker	Kylie	0439 995 124
Nishitani	Yassy	0437 115 764

RIDERS AGENT

Surname	Given Names	Phone
Conroy	Warren	0421 094 903

APPRENTICE JOCKEYS

Surname	Given Names	Trainer
Baker	Chelsea	Barry Baker
Byrne Burke	Erica	Adam Trinder
Curtain	Jemma	Stuart Gandy
Doyle	Thomas	Adam Trinder
Johnstone	Taylor	Leon Wells
Jordan	Codi	Glenn Stevenson
Louis	Brandon	Imogen Miller
Lui	Peter	Leon Wells
Maskiell	Kyle	Tanya Hanson
Stalker	Tayah	Cameron Thompson
Wells	Chloe	Leon Wells
White	Laura	Scott Brunton

FARRIERS

Surname	Given Names	Phone
Brown	Wayne	03 6265 2103
Clark	Dylan	0400 976 376
Delon	Gaetan	0439 709 880
Franklin	Bradley	0408 025 514
Gaffney	Charles	0428 113 804
Jarman	Maurice	0417 504 625
McCulloch	Graeme	0417 018 895
Schuuring	Nigel	0400 878 857
Scott	Greg	0401 158 897
Taylor	Jim	0427 621 520
Trinder	Michael	0408 143 705
Wilson	Andrew	04 18 399 607

TASMANIAN STALLIONS

FEE	STALLION	CONTACT	TELEPHONE
\$FOA	King's Envy (AUS) 2005	Miss C Bellette	0477 077 125
\$FOA	Mikaylas Raider (AUS) 2010	Mr D Brazendale	0408 350 210
\$FOA	Red Arrow (AUS) 2003	Weona Park	0435 824 662
\$FOA	De Shamekh (AUS) 2009	Weona Park	0435 824 662
\$FOA	Hvasstan (AUS) 2009	Weona Park	0435 824 662
\$1,100	Decides (AUS) 2002	Mr G Griggs	0407 352 493
\$2,200	Our Casanova (AUS) 2010	Mr G Dawkins	0418 572 851
\$2,750	Tough Speed (USA) 1997	Armidale Stud	03 6393 6124
\$3,300	Mawingo (GER) 2008	Grenville Stud	03 6392 2330
\$3,300	Ambidexter (AUS) 2008	Mr C Thompson	0400 416 406
\$3,850	Toorak Toff (AUS) 2007	Mr RA Gudden	0400 682 099
\$4,400	Stratosphere (AUS) 2015	Grenville Stud	03 6392 2330
\$5,500	Zululand (AUS) 2011	Grenville Stud	03 6392 2330
\$6,050	Alpine Eagle (AUS) 2011	Armidale Stud	03 6393 6124
\$7,700	Levendi (AUS) 2014	Broadmarsh Stud	0409 211 155
\$8,800	Needs Further (AUS) 2007	Armidale Stud	03 6393 6124

If you would like your stallion listed in, or removed from the racing calendar, please email a.barrett@tasracing.com.au

TASRACING

Ladbroke Park Elwick
 Glenorchy Tasmania 7010
 Ph: (03) 6212 9333
 Fax: (03) 6272 5191
 www.tasracing.com.au
 www.tasracingcorporate.com.au

Mailing Address
 PO Box 730
 Glenorchy Tasmania 7010

Code Lead - Thoroughbreds
 Blayne Hudson
 Ph: (03) 6212 9324
 Fax: (03) 6272 5191
 Mobile: 0406 179 281
 Email: b.hudson@tasracing.com.au

Thoroughbred Co-ordinator
 Stewart Brown
 Ph: (03) 6212 9340
 Mobile: 0418 465 135
 Email: s.brown@tasracing.com.au

Racing Operations Manager
 Liam Swan
 Ph: (03) 6212 9322
 Fax: (03) 6272 5191
 Mobile: 0428 657 500
 Email: l.swan@tasracing.com.au

Animal Welfare Manager
 Belinda Lewis
 Ph: (03) 6212 9311
 Fax: (03) 6272 5191
 Mobile: 0407 133 405
 Email: b.lewis@tasracing.com.au

OFFICE OF RACING INTEGRITY

Head Office: Prospect Government Offices
 171 Westbury Road
 Prospect, Tasmania 7250
 Ph: (03) 6777 1900
 Fax: (03) 6777 5148
 www.racing.tas.gov.au

Mailing Address
 PO Box 1329
 Launceston Tasmania 7250

Office Hours: 9:00 am - 4:00 pm

Email
 Operations:
 operations@racingintegrity.tas.gov.au
 Licensing & Registration:
 registrar@racingintegrity.tas.gov.au
 Stewards:
 stewards@racingintegrity.tas.gov.au

RACING VICTORIA

Ph: (03) 9258 4693
 Fax: (03) 9736 5281
 Email:
 groupshandicap@racingvictoria.net.au
 www.racingvictoria.net.au

DISCLAIMER:

While every effort is made to ensure the accuracy of information within this publication, it should be noted that some material is sourced from a number of external organisations and bodies. Tasracing and any contributing third parties shall have no legal liability or responsibility for the content or indirectly in connection with reliance on the use of such information. For the latest Tasracing information, amendments or alterations please check the Tasracing website at www.tasracingcorporate.com.au.

**DEVONPORT RACING CLUB**

(Provincial)
 Ph: (03) 6427 2070
 Fax: (03) 6427 2488
 Email: admin@devonportracingclub.net.au
 www.devonportracingclub.com.au

Mailing Address
 PO Box 2013
 Spreyton Tasmania 7310

**KING ISLAND RACING CLUB**

(Country)
 President - Audrey Hamer
 0429 621 575

Track Ph/Fax: (03) 6462 1161
 (race days only)

Email: kingislandracingclub@gmail.com
 www.kiracing.com.au

**TASMANIAN RACING CLUB**

(Provincial)
 Ph: (03) 6272 9492
 Fax: (03) 6272 1429
 Email: info@trchobart.com.au
 www.trchobart.com.au

Mailing Address
 PO Box 45
 Glenorchy Tasmania 7010

**TASMANIAN TURF CLUB**

(Provincial)
 Ph: (03) 6326 1070
 Fax: (03) 6326 5138
 Email: admin@turfclubtas.com
 www.tasmanianturfclub.com

Mailing Address
 PO Box 340
 Mowbray Heights Tasmania 7248

			TIME SLOT	PROV CTRY	CLUB	2YO	3YO	3YO FEATURE	3YO&UP MAIDEN	MDN/ C1	C1	BM62 (60kg)	C3	BM68 (59kg)	BM76	F&M	OPEN	OPEN DISTANCE			
DECEMBER	1	WED	LAUNCESTON	N	P	TTC		LISTED \$100k 3YO Cup 1200m	1200m TB 1400m TB	1600m	1200m		2100m		1400m		LISTED \$125k Newmarket QLTY 1200m				
	3	FRI	DEVONPORT	T	C	DRC			1009m TB		1150m 1350m		1350m 1650m		1150m		\$30k Golden Mile 1650m				
	8	WED	LAUNCESTON	N	C	TTC	\$30k Alfa Bowl 1100m		1200m TB 1400m	2100m	1400m	1200m		1600m	1400m						
	15	WED	LAUNCESTON	N	P	TTC		\$50k 3YO Trophy 1400m	1200m TB			1200m 1600m	1200m	1400m		1200m 2100m		LISTED \$100k Conquering WFA 1400m			
	19	SUN	HOBART		D	C	TRC	1100m (MDN) TB		1100m 1600m TB		1100m 1400m		1600m		1400m					
	22	WED	DEVONPORT		D	P	DRC			1009m 1350m TB	1880m			1150m 1350m		1880m	1009m		\$50k Sheffield Cup 1650m		
	29	WED	HOBART		D	C	TRC	\$30k Alexandra Plate 1100m		1200m TB 1400m TB	1600m	1200m		2100m		1200m 1600m			\$30k Winzenburg 1100m		
JANUARY	1	SAT	LONGFORD		D	C	TTC		1400m 1800m				1400m (0-62) 1800m		1400m (BM66)			\$25k Longford Cup 1800m			
	5	WED	DEVONPORT		D	P	DRC		1009m TB 1350m TB	1880m TB	1350m		1009m 1650m		1150m	1350m			\$100k Devonport Cup 1880m		
	7	FRI	HOBART		T	P	TRC	1000m (MDN) TB	LISTED \$100k Tasmanian Guineas 1600m	1100m TB	1600m	1400m		1200m		1400m (MM) (BM64)	LISTED \$100k Tasmanian Stakes 1600m	\$30k Brighton Cup QLTY 2100m			
	14	FRI	LAUNCESTON		N	C	TTC		1200m (MDN) TB	1400m	2100m (MM)	1200m		1200m 1600m		1400m	2100m		1100m		
	19	WED	LAUNCESTON		N	C	TTC			1200m TB 1600m TB		1600m		1100m (0-62) 1400m		1200m (MM) 2100m (0-66)	1600m				
	23	SUN	HOBART		D	P	TRC	LISTED \$100k Elwick Stakes 1100m	\$50k Thousand Guineas 1600m	1200m (MM) 1400m TB	2100m TB	1400m				1400m	\$50k Lady Lynette SW&P 1100m		\$75k Summer Cup WFA 2200m		
	26	WED	LAUNCESTON		N	P	TTC		LISTED \$100k Launceston Guineas 2100m	1100m	1600m	1200m	2100m	1100m 1400m (MM)					\$50k Ladbrokes Stakes WFA 1200m		
FEBRUARY	6	SUN	LAUNCESTON		D	P	TTC	LISTED \$150k Gold Sovereign 1200m		1200m TB 1400m	2100m TB		1400m (0-62) 1600m		1200m 1400m (MM)				\$30k Sydeston Cup 2100m		
	11	FRI	HOBART		D	P	TRC		1100m (HCP) TB LISTED \$100k Strutt Stakes 2100m		1400m		1100m		1600m		GRP3 \$150k Bow Mistress WFA 1200m				
	13	SUN	HOBART		D	P	TRC			1100m TB 1400m TB	1600m	1200m		1400m 2100m		1200m		LISTED \$100k Thomas Lyons WFA 1400m	GRP3 \$250k Hobart Cup 2400m		
	20	SUN	LAUNCESTON		T	P	TTC	\$75k Magic Millions 2YO 1200m (MM)	\$65k Magic Millions 3YO/4YO 1400m (MM)	LISTED \$150k Tasmanian Oaks 2100m	1100m	2100m		1600m	1200m	1400m					
	23	WED	LAUNCESTON		D	P	TTC		\$75k 3YO Classic 1200m	1200m TB 1400m TB		1400m		1200m		2100m (BM66)		GRP3 \$150k Vamos WFA 1400m	LISTED \$50k Royal Rambo 1200m	GRP3 \$250k Launceston Cup 2400m	
MARCH	2	WED	LAUNCESTON		N	C	TTC	1100m (MDN) TB		1200m	1600m	1200m		1400m 2100m		1600m	1100m				
	9	WED	LAUNCESTON		N	C	TTC			1100m TB 1400m	2100m TB	1400m		1100m (0-62) 1600m (0-62)		1200m	1400m				
	16	WED	LAUNCESTON		N	P	TTC		1100m (MDN) TB	1200m 1600m TB		1200m 1600m		1400m					1200m	\$50k Tasmanian St Leger 2400m	
	27	SUN	HOBART		D	C	TRC	1200m (HCP)		1100m 1400m TB	2100m	1400m		1600m	1100m	1400m					
	30	WED	LAUNCESTON		N	C	TTC			1200m TB 1400m	1600m	1100m		1200m 1400m		2100m	1600m				

BARRIER TRIAL DATES

DECEMBER 2021

Longford	Tue 7 Dec	Noms close 9am Mon 6 Dec
Devonport	Tue 14 Dec	Noms close 9am Mon 13 Dec
Hobart	Tue 21 Dec	Noms close 9am Mon 20 Dec

JANUARY 2022

Longford	Tue 4 Jan	Noms close 9am Mon 3 Jan
Hobart	Tue 11 Jan	Noms close 9am Mon 10 Jan
Longford	Tue 18 Jan	Noms close 9am Mon 17 Jan
Hobart	Tue 25 Jan	Noms close 9am Mon 24 Jan

FEBRUARY 2022

Longford	Tue 1 Feb	Noms close 9am Mon 31 Jan
Longford	Tue 8 Feb	Noms close 9am Mon 7 Feb
Hobart	Tue 15 Feb	Noms close 9am Mon 14 Feb
Longford	Thu 17 Feb	Noms close 9am Wed 16 Feb

MARCH 2022

Longford	Tue 1 Mar	Noms close 9am Mon 28 Feb
Devonport	Tue 8 Mar	Noms close 9am Mon 7 Mar
Longford	Tue 15 Mar	Noms close 9am Mon 14 Mar
Devonport	Tue 22 Mar	Noms close 9am Mon 21 Mar
Hobart	Tue 29 Mar	Noms close 9am Mon 28 Mar

* All Barrier Trials are subject to weather conditions and track availability. Trainers will be advised by SMS of any changes and these will also be posted on www.tasracing.com.au.

Trial start times are 10.30 am



If you haven't been to Magic Millions
THIS IS WHAT YOU'RE MISSING

THE HIGHEST RETURNING YEARLING SALE IN AUSTRALIA!



PICTURED: MYSTIC JOURNEY | COST: \$11,000 | EARNINGS: \$3.9 MILLION

PALENTINO Cost: \$85,000, Earnings: \$1.3 Million | SOUL PATCH Cost: \$45,000, Earnings: \$605,850
EASTENDER Cost: \$22,000, Earnings: \$593,175 | MANDELA EFFECT Cost: \$18,000, Earnings: \$628,439
KEN JORWOOD Cost: \$41,000, Earnings: \$754,201 | THE CLEANER Cost: \$10,000, Earnings: \$1.3 Million

SAVE THE DATES

Sunday 20 February 2022 – Magic Millions 2YO Classic and Magic Millions 3YO & 4YO Classic
Monday 21 February 2022 – Magic Millions Tasmanian Yearling Sale

www.magicmillions.com.au