

22 June 2023

## **Brighton Training Centre Construction Works**

### **Pavement Grading Works in Front of Stable Blocks**

As per Tasracing communications of 18 May 23 and the meeting on site of 25 May 23 Crossroads Civil will be returning to site on **Monday, 03 July 23**.

As per the Crossroads Civil staging plan discussed and agreed at the meeting on site on 25 May 23 Crossroads Civil will commence works at the dam end of the stable blocks adjacent to Gary White's stables.

In accordance with the Tasracing communications of 18 May 23 the previous track timings will be in place during the construction works which are:

#### **Monday to Saturday – 0400 to 1000hrs with the last horse on track no later than 0940hrs**

Crossroads Civil will commence work at **1000hrs** sharp to enable the work to be completed in the most efficient manner. Temporary fencing will be erected around the Crossroads Civil work area. Some Crossroads Civil machinery will stay in place behind the temporary fencing at close of business each day. Please be mindful of this change in environment when moving past with horses.

Workers will commence moving temporary fencing at 0945hrs to enable a 1000hrs start.

Tasracing and Crossroads Civil will be on site at Brighton on Monday, 26 June 23 at 1330hrs for site coordination and alignment. We would welcome stable block lessees from meeting of 25 May 23 to confirm arrangements.

Please utilise the top carpark during the works to enable seamless access to site for Crossroads Civil.

Thank you for your ongoing support and collaboration during the construction works.

#### **Tasracing Projects and Assets**

T: +61 3 6212 9333

E: [admin@tasracing.com.au](mailto:admin@tasracing.com.au)

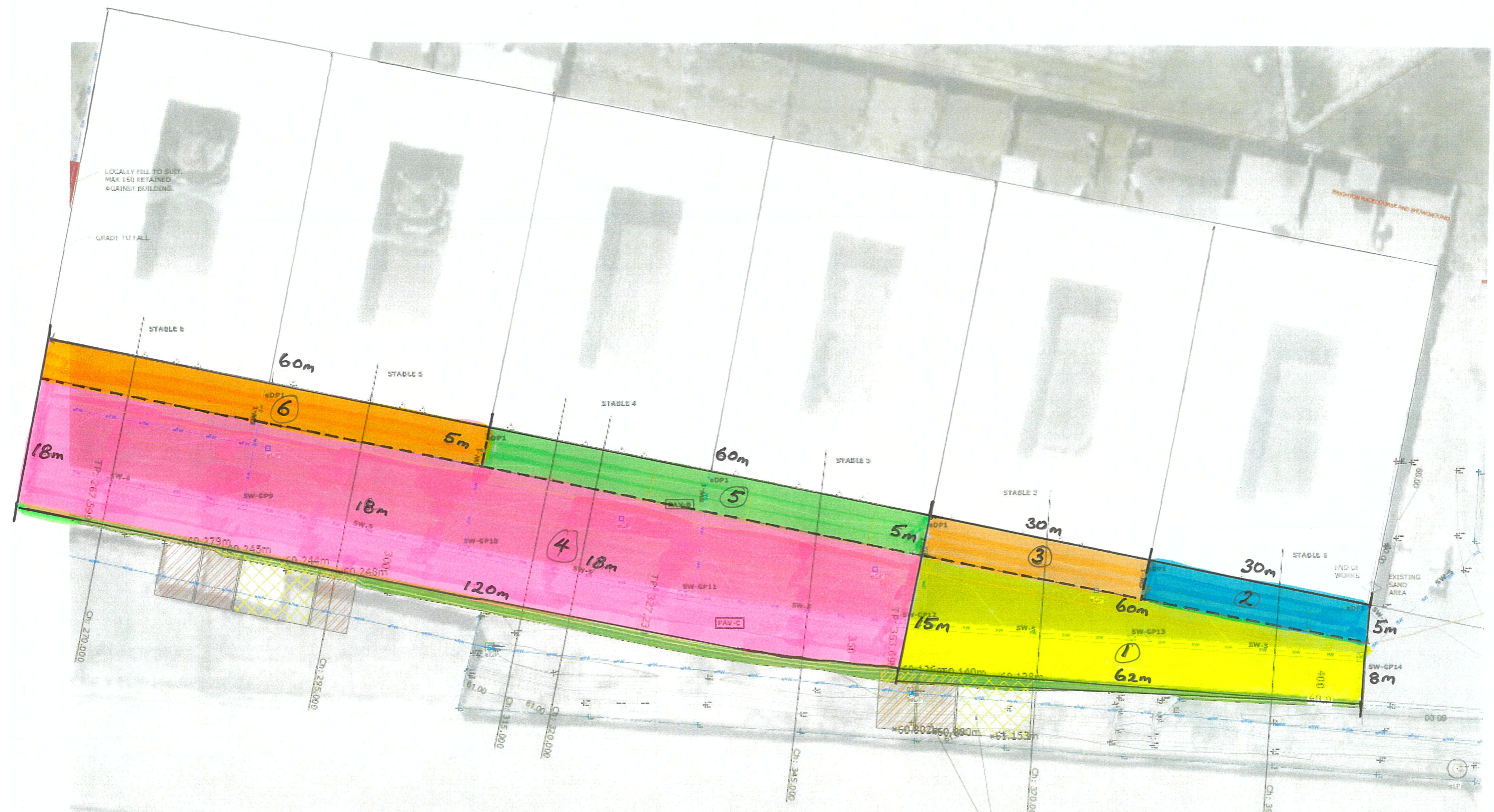
W: [tasracingcorporate.com.au](http://tasracingcorporate.com.au)

Elwick Racecourse, 6 Goodwood Rd Glenorchy Tasmania 7010

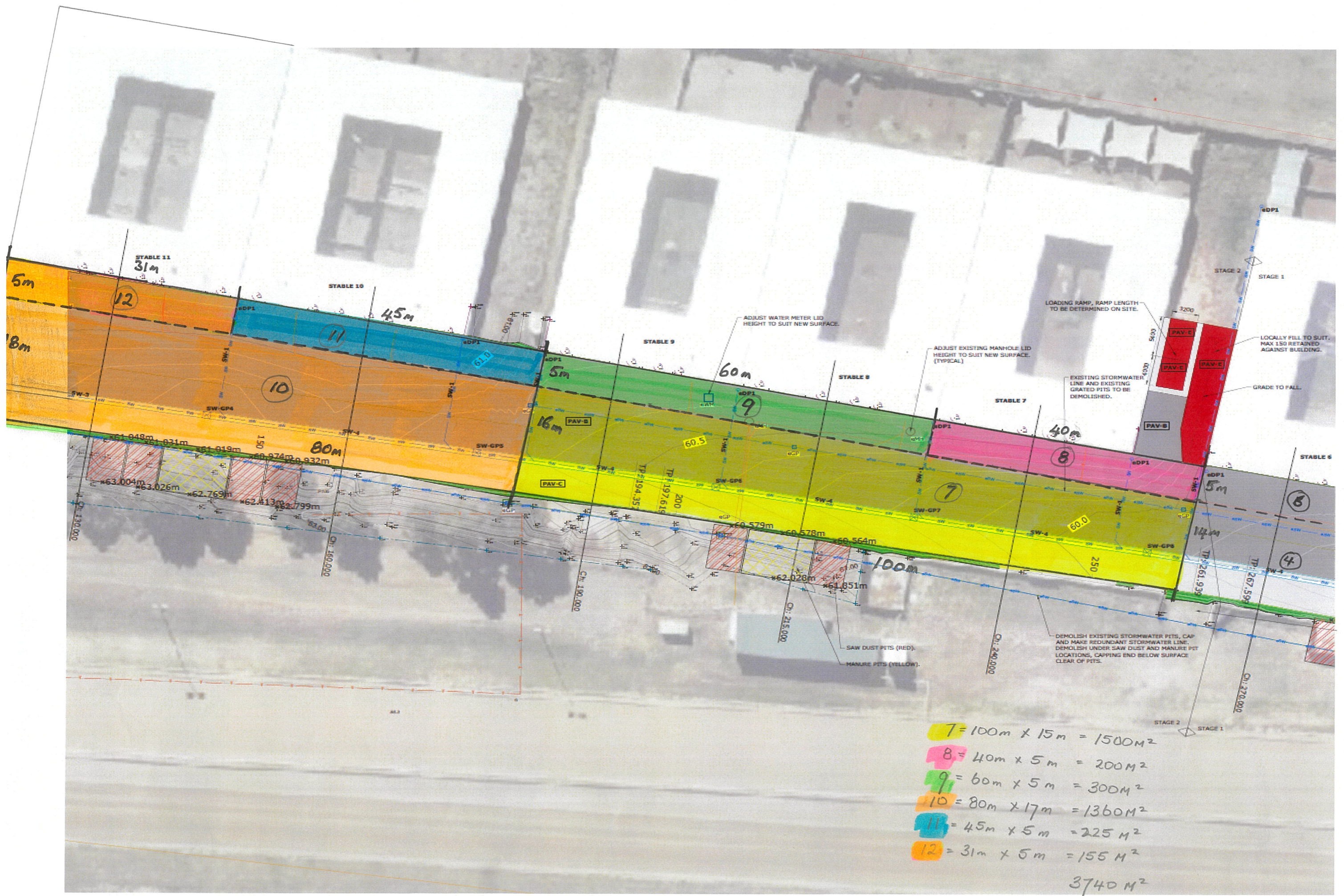
PO Box 730, Glenorchy Tasmania 7010 ABN 62 269 303 946

## Crossroads Civil Staging Plan for Brighton Training Centre in front of the Stable Blocks

1. Each stage is in the order that they will be completed on consecutive days.
  - a. From Stage 1 through to Stage 14
  - b. Each Stage will take approximately 1 day to complete in front of each stable block
    - i. The other sections away from the stable block will take longer
  - c. Work must commence at 1000hrs sharp.
  - d. All horses must be back in their stables no later than 1000hrs to enable work to commence.
  - e. Workers will commence moving temporary fencing at around 0945hrs to allow machines to start at 1000hrs.
  - f. Emergency access is available at all times for vets and emergency services
2. On stages 1, 4, 7, 10 and 13 which are closest to the track Crossroads have allowed a lot wider area to be completed.
3. Crossroads have allowed for temporary mesh security fencing to be erected along side the 4-5m pavement area in front of the stables which will enable all stable uses access at all times.
4. When completing stages 2, 3, 5, 6, 8, 9, 11, 12, and 14 there will be no access at all to the stables that are in that stage area from 10.00am sharp till 5.30pm. This will enable the project to be completed quickly and each stable will only be affected for one day.
  - a. Crossroads staff will liaise with Tas Racing officials of which day each stable will be affected to allow the stable adequate time to prepare for the day of no front access.
  - b. Tasracing will liaise with each stable block holder
  - c. Each trainer will have the opportunity to occupy vacant stable blocks on the day that work is being conducted directly to the front of their normal stable block.
5. Tasracing will have a Construction Supervisor and a Security person in place for the duration of the works.
  - a. This is for everyone's safety and to ensure no one is placed in a position of danger during the works
6. All vehicles are to be parked in the top car park for the duration of the works
  - a. Crossroads will have a variety of plant equipment in motion at any one time.
  - b. Crossroads will also have large trucks delivering gravel and removing fill from the site and transporting dump site.
  - c. This is busy work and situational awareness is paramount as construction equipment is unforgiving
7. Due to the size of the plant and equipment it is not practical to drive it back and forth to the top car park therefore some equipment will remain behind the temporary fencing at the close of work each day.
  - a. This will unduly add to the time take to complete the job and potentially cause other damage and greater disruption.



- 1 = 61m x 11.5m = 701.5 M<sup>2</sup>
  - 2 = 30m x 5m = 150 M<sup>2</sup>
  - 3 = 30m x 5m = 150 M<sup>2</sup>
  - 4 = 120m x 18m = 2160 M<sup>2</sup>
  - 5 = 60m x 5m = 300 M<sup>2</sup>
  - 6 = 60m x 5m = 300 M<sup>2</sup>
- 3761.5 M<sup>2</sup>.



7 = 100m x 15m = 1500M<sup>2</sup>  
 8 = 40m x 5m = 200M<sup>2</sup>  
 9 = 60m x 5m = 300M<sup>2</sup>  
 10 = 80m x 17m = 1360M<sup>2</sup>  
 11 = 45m x 5m = 225M<sup>2</sup>  
 12 = 31m x 5m = 155M<sup>2</sup>  
 3740 M<sup>2</sup>

